

# VectaMount<sup>®</sup> Express

Mounting Medium




Together we breakthrough™

## Streamline your IHC workflow with faster clearing and mounting

**Traditional Workflow**

**Stain**  
Target antigen on tissue section



**Dehydrate and Clear**  
Total time 15–30 minutes

70% EtOH

95% EtOH

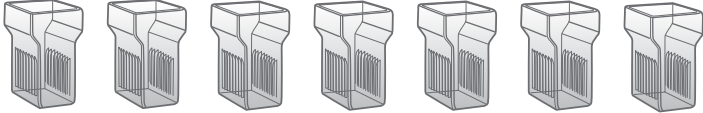
95% EtOH

100% EtOH

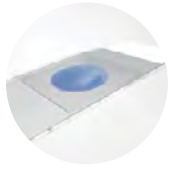
100% EtOH


Xylene

Xylene



**Mount**






15-30 minutes

**Workflow with VectaMount Express**

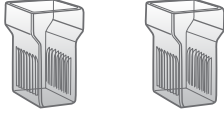
**Stain**  
Target antigen on tissue section



**Wash**  
Total time 2 minutes

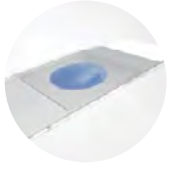
100% Isopropanol


100% Isopropanol



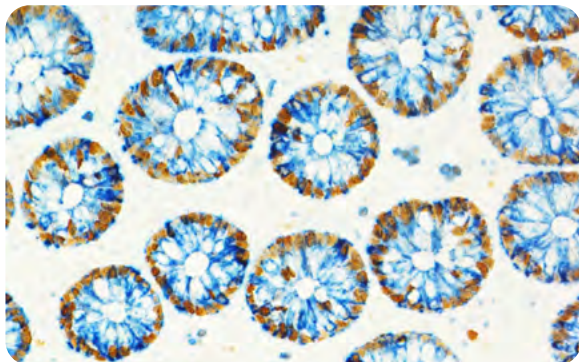
Save Time >

**Mount**

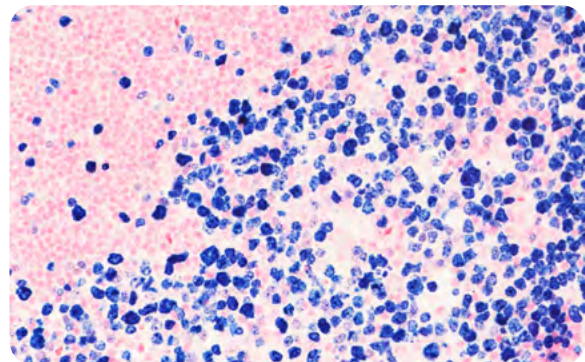




2 minutes



Human Colon, double label: Mouse Anti-Ki67, ImmPRESS<sup>®</sup>-HRP Anti-Mouse IgG, ImmPACT<sup>®</sup> DAB EqV and Rabbit Anti-Cytokeratin ImmPRESS-AP Anti-Rabbit IgG, Vector<sup>®</sup> Blue. Mounted in VectaMount Express Mounting Media.



Human Tonsil: Mouse Anti-Ki67, ImmPRESS-AP Anti-Mouse IgG, Vector Blue, Nuclear Fast Red counterstain. Mounted in VectaMount Express Mounting Media.