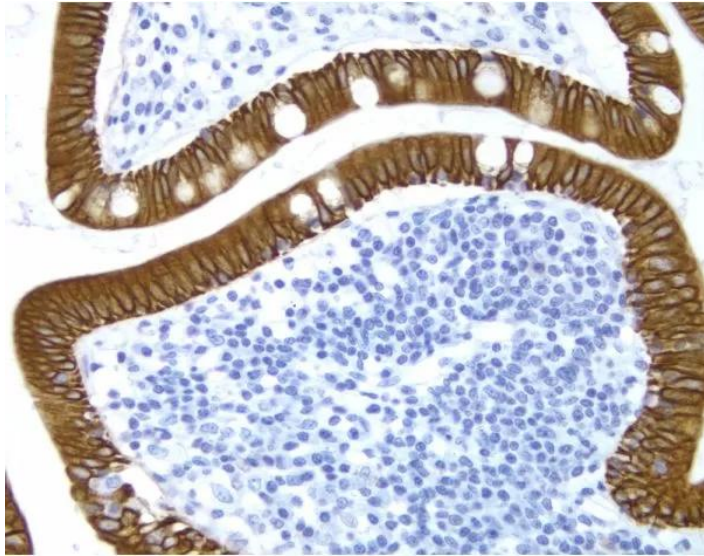




HEMATOXYLIN QS COUNTERSTAIN

SKU: H-3404-100



DESCRIPTION

Vector Hematoxylin QS (H-3404), a modification of Mayer's hematoxylin developed especially for immunocytochemistry, provides crisp blue nuclear staining. This formula is ready-to-use without filtration, requires no separate bluing step, and stains in less than 45 seconds.

Features:

- Provides excellent color contrast with most commonly used peroxidase and alkaline phosphatase substrates
- Suitable for use with nonaqueous and aqueous mountants
- Mercury-free

SPECIFICATIONS

Format Ready-to-Use

For research use only. Not intended for therapeutic or diagnostic use in animals or humans.



Unit Size 100 ml

Applications Immunohistochemistry / Immunocytochemistry, In situ hybridization

TECHNICAL INFORMATION

Counterstain/Substrate Compatibility Table

This table is designed as a reference to determine the optimal counterstain/substrate combination for your application.

For research use only. Not intended for therapeutic or diagnostic use in animals or humans.



Counterstain/Substrate Compatibility Table

This table is designed as a reference to determine the optimal counterstain/substrate combination for your application.

Substrate	Substrate Cat. No	VECTOR® Hematoxylin and Hematoxylin QS H-3401 and H-3404	VECTOR® Methyl Green H-3402	VECTOR® Nuclear Fast Red H-3403
ImmPACT™ DAB (brown)	SK-4105	Excellent Contrast	Excellent Contrast	Fair Contrast
DAB (brown)	SK-4100	Excellent Contrast	Excellent Contrast	Fair Contrast
DAB-Ni (gray-black)	SK-4100	Excellent Contrast	Fair Contrast *	Good Contrast
ImmPACT™ AEC (red)	SK-4205	Excellent Contrast	Counterstain Incompatibility **	Color Incompatibility
ImmPACT™ AMEC <i>Red</i> (red)	SK-4285	Excellent Contrast	Counterstain Incompatibility **	Color Incompatibility
AEC (red)	SK-4200	Excellent Contrast	Counterstain Incompatibility **	Color Incompatibility
TMB (blue)	SK-4400	Color Incompatibility	Counterstain Incompatibility	Excellent Contrast
ImmPACT™ VIP (purple)	SK-4605	Fair Contrast	Excellent Contrast	Poor Contrast
VECTOR® VIP (purple)	SK-4600	Fair Contrast	Excellent Contrast	Poor Contrast
ImmPACT™ SG (blue-gray)	SK-4705	Poor Contrast	Good Contrast	Excellent Contrast
VECTOR® SG (blue-gray)	SK-4700	Poor Contrast	Good Contrast	Excellent Contrast
ImmPACT™ NovaRED™ (red)	SK-4805	Excellent Contrast	Excellent Contrast ***	Color Incompatibility
VECTOR® NovaRED™ (red)	SK-4800	Excellent Contrast	Excellent Contrast ***	Color Incompatibility
VECTOR® RED (magenta)	SK-5100	Excellent Contrast	Excellent Contrast	Color Incompatibility
VECTOR® BLACK (black)	SK-5200	Excellent Contrast	Excellent Contrast *	Excellent Contrast
VECTOR® BLUE (blue)	SK-5300	Color Incompatibility	Good Contrast	Excellent Contrast
BCIP/NBT (indigo)	SK-5400	Color Incompatibility	Excellent Contrast *	Excellent Contrast
Glucose Oxidase NBT (indigo)	SK-3100	Color Incompatibility	Excellent Contrast	Excellent Contrast
Glucose Oxidase TNBT (black)	SK-3200	Excellent Contrast	Excellent Contrast	Excellent Contrast

* This substrate shows a slight decrease in sensitivity following the methyl green protocol. This decrease can be minimized by reducing the heat incubation and acetone rinse times in the methyl green protocol.

** Substrate dissolves in acetone wash.

*** A slight color change in ImmPACT™ NovaRED™ and Vector® NovaRED™ reaction product may be seen using methyl green.

Counterstains should be optimized for each tissue type, antigen unmasking protocol, and immunocytochemical staining intensity desired.

Optimize Counterstain Intensity

CITATIONS

For research use only. Not intended for therapeutic or diagnostic use in animals or humans.

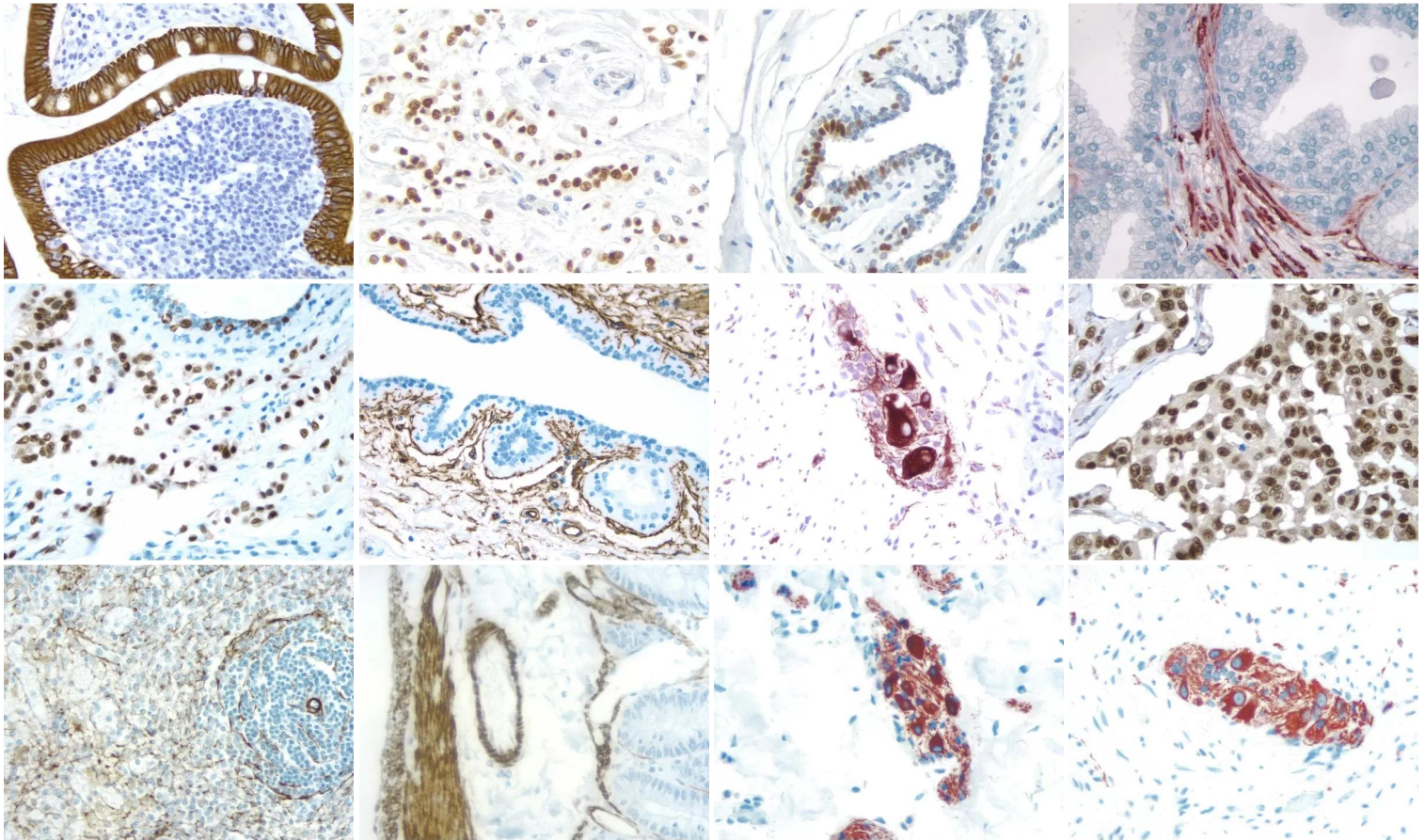


Powered by Bioz © 2023 See more details on Bioz

DOCUMENTS

- [User Guide](#)
- [Counterstain/Substrate Compatibility Chart](#)
- [Safety Data Sheet](#)
- [Download CoA](#)
- [Datasheet](#)

GALLERY IMAGES



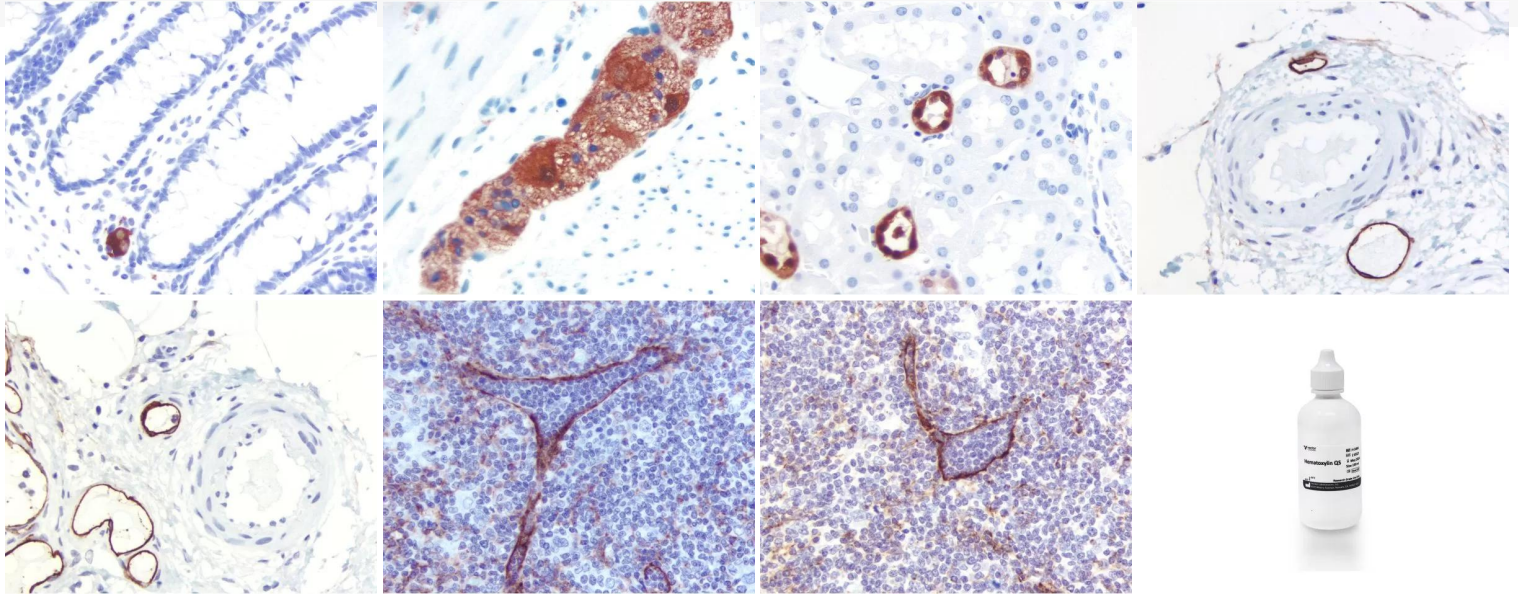
For research use only. Not intended for therapeutic or diagnostic use in animals or humans.



www.vectorlabs.com

Email: customerservice@vectorlabs.com

Telephone: (650) 697-3600



For research use only. Not intended for therapeutic or diagnostic use in animals or humans.

[Hematoxylin QS Counterstain](#)

<https://vectorlabs.com/products/vector-hematoxylin-qs-counterstain/>