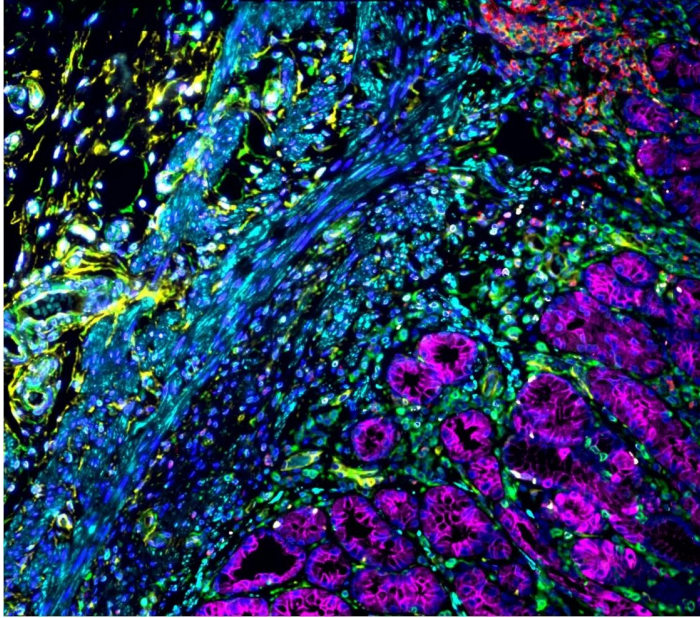




VECTAPLEX™ ANTIBODY REMOVAL KIT

SKU: VRK-1000



DESCRIPTION

Your path to simplified multiplexing starts with VectaPlex™. This kit is designed to remove antibodies and other non-covalently bound detection reagents from FFPE tissue sections in immunohistochemistry (IHC), immunofluorescence (IF) and tyramide signal amplification (TSA) workflows.

Benefits include:

- Removes antibodies and other non-covalently bound detection reagents from FFPE tissue sections
- Compatible with immunofluorescence-, fluorescent tyramide- and immunohistochemistry-based workflows
- Obtain more spatial biomarker information from each tissue section
- Stain with multiple primaries from the same species and a single secondary without cross reactivity

For research use only. Not intended for therapeutic or diagnostic use in animals or humans.



- Maintains tissue morphology through multiple cycles – even on delicate specimens like breast & skin
- Maintains tissue antigenicity through multiple cycles
- Primary antibody concentrations do not need to be optimized based on the order of detection in multiplex workflows
- Easy-to-use, room temperature application

The first image above is a composite image generated from individual images taken during six rounds of immunofluorescence staining using VectaPlex. FFPE stomach; six mouse primary antibodies – CD20 (red), CD34 (yellow), Desmin (cyan), AE1/AE3 (magenta), CD3 (gray), Vimentin (green) – detected with DyLight™ 488 horse anti-mouse IgG. Blue indicates DAPI stain. Vector® TrueView® Autofluorescence Quencher Kit applied to suppress background fluorescence.

The second image above is a 4-plex IHC image taken of esophagus tissue stained for CD68 (brown) using ImmPACT DAB, CD20 (red) using ImmPACT Vector Red, CD34 (blue) using Vector Blue, and Desmin (grey) using ImmPACT SG. Each round of staining was performed using normal IHC protocols with VectaPlex treatment between each round of staining.

The third image above was captured after three rounds of tyramide staining. VectaPlex was used after each round. FFPE tonsil is shown, following application of 3 mouse primary antibodies – CD3 (red), CD68 (green) and AE1/AE3 (purple) – detected using Opal 3-plex TSA Manual Detection Kit. Blue indicates DAPI stain.

SPECIFICATIONS

Format	Ready-to-Use
Unit Size	1 Kit
Storage Instructions	(15–25° C)
Applications	Immunohistochemistry, Immunofluorescence
Target Species	Universal
Source Species	Universal

TECHNICAL INFORMATION

This ready-to-use kit is designed to remove antibodies and other non-covalently bound detection reagents from formalin-fixed paraffin-embedded (FFPE) tissue sections in

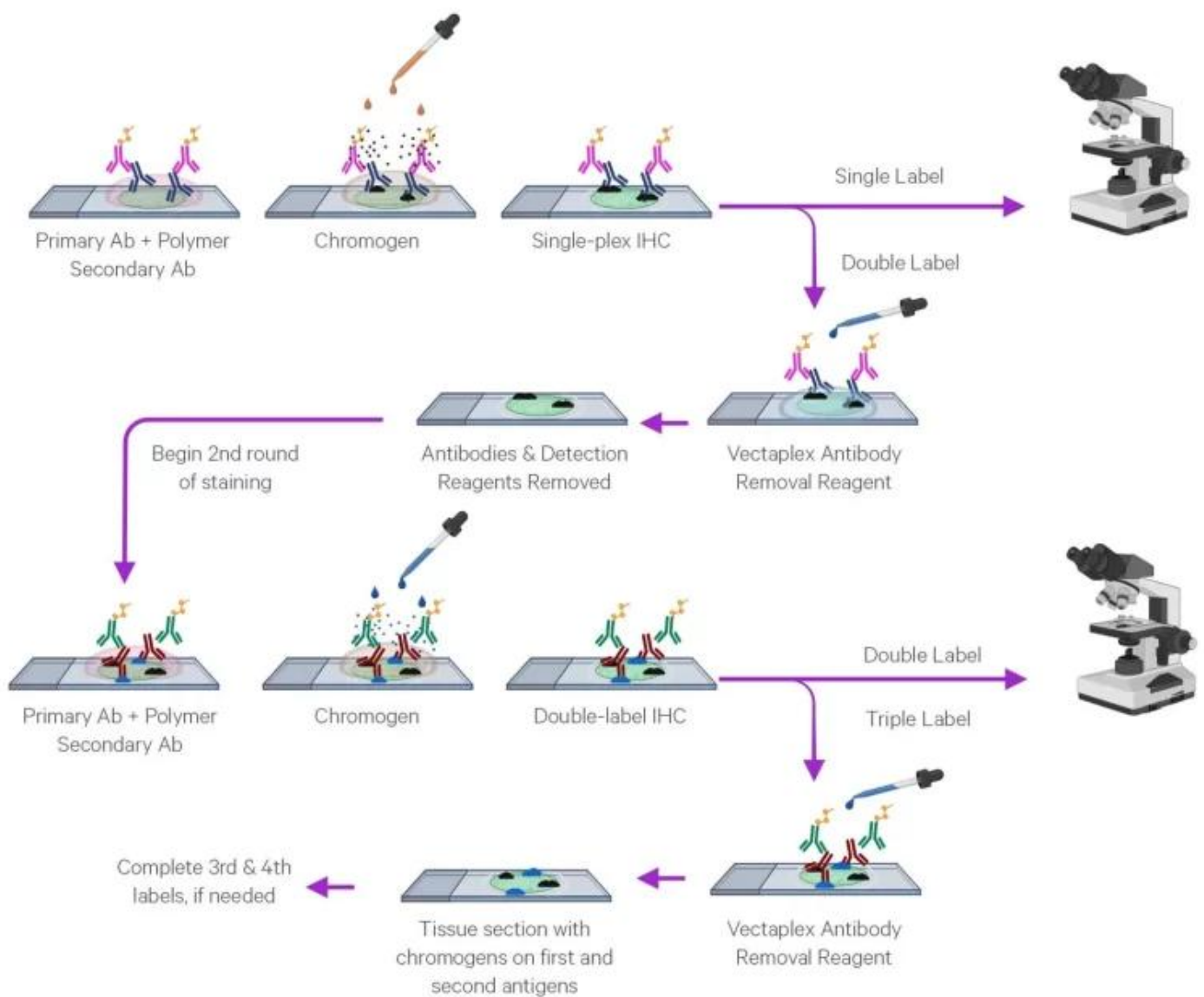
For research use only. Not intended for therapeutic or diagnostic use in animals or humans.



immunofluorescence or tyramide signal amplification staining workflows.

VectaPlex simplifies sample processing for manual workflows, accelerates multiplex assay optimization, preserves precious sample, and maintains tissue integrity and morphology through multiple cycles of antibody binding and removal.

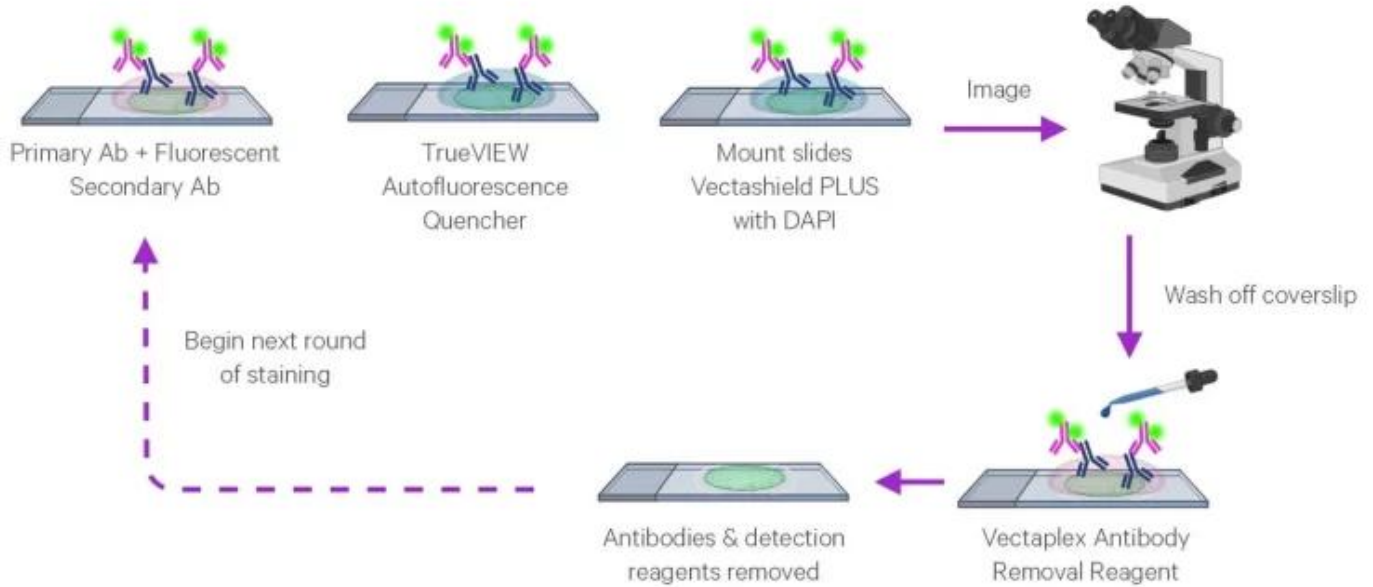
VectaPlex IHC Workflow: After staining with one of the approved substrates, VectaPlex is used to remove detection reagents in preparation for another cycle of staining. The substrate is not removed or impacted by VectaPlex. A single image is collected after all cycles are complete.



For research use only. Not intended for therapeutic or diagnostic use in animals or humans.

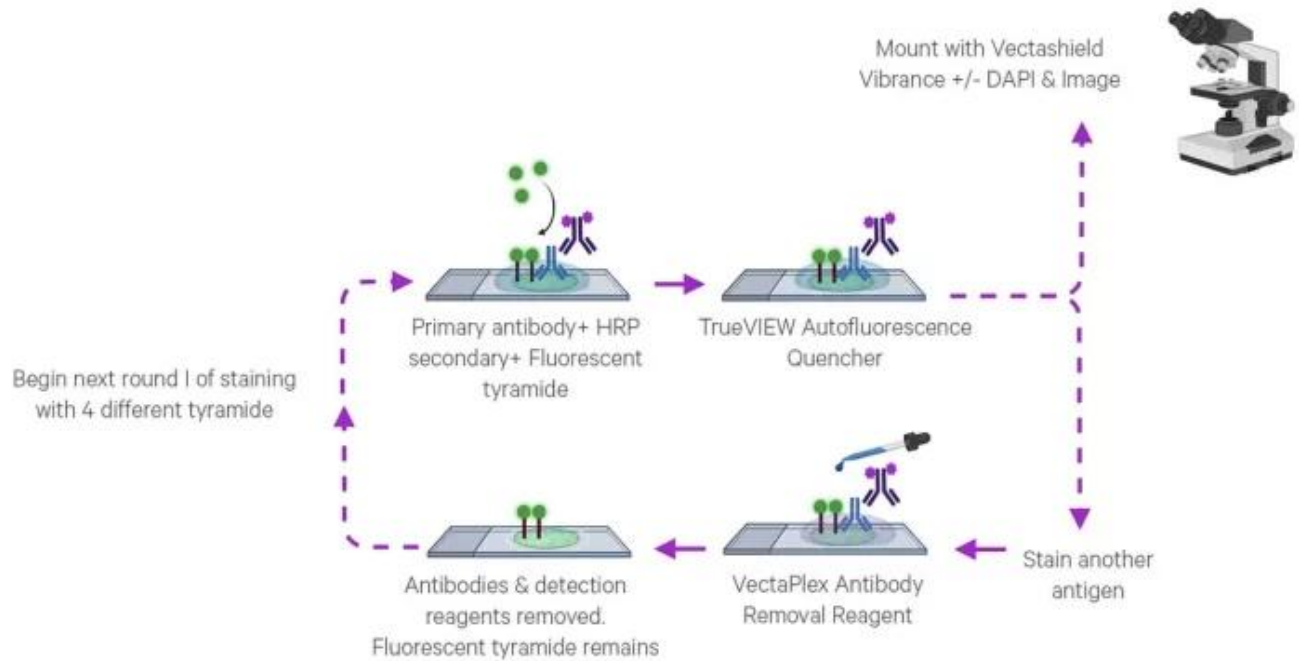


VectaPlex IF Workflow: After IF staining and imaging the sample, VectaPlex is used to remove detection reagents in preparation for another cycle of staining. After all images have been collected, a composite image is formed from individual images.



VectaPlex TSA Workflow: After TSA staining and imaging the sample, VectaPlex is used to remove detection reagents in preparation for another cycle of staining. The tyramide signal is not removed by VectaPlex. A single image is collected after all cycles are complete.

For research use only. Not intended for therapeutic or diagnostic use in animals or humans.



DOCUMENTS

- [Product Information](#)
- [User Guide](#)
- [Automated Staining Protocol](#)
- [White Paper](#)
- [Safety Data Sheet](#)
- [Download CoA](#)
- [Datasheet](#)
- [Guidance for Image Alignment](#)
- [FAQs](#)

GALLERY IMAGES

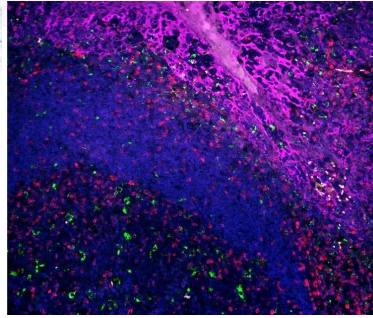
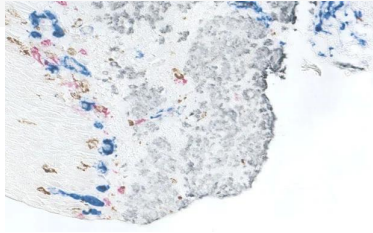
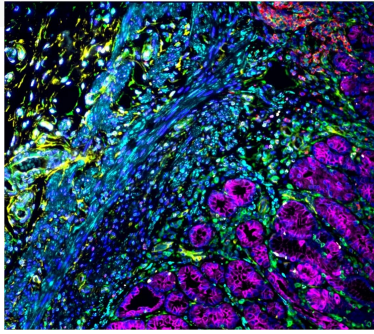
For research use only. Not intended for therapeutic or diagnostic use in animals or humans.



www.vectorlabs.com

Email: customerservice@vectorlabs.com

Telephone: [\(650\) 697-3600](tel:(650)697-3600)



For research use only. Not intended for therapeutic or diagnostic use in animals or humans.

[VectaPlex™ Antibody Removal Kit](https://vectorlabs.com/products/vectaplex/)

<https://vectorlabs.com/products/vectaplex/>