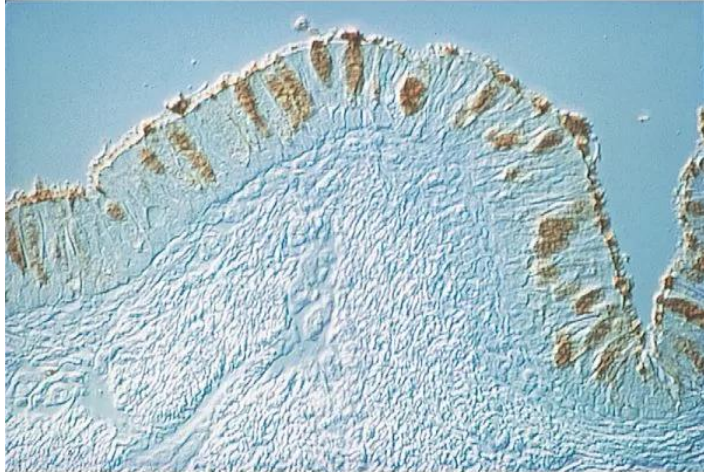




SOYBEAN AGGLUTININ (SBA), UNCONJUGATED

SKU: L-1010



DESCRIPTION

SBA preferentially binds to oligosaccharide structures with terminal α - or β -linked *N*-acetylgalactosamine, and to a lesser extent, galactose residues. Binding can be blocked by substitutions on penultimate sugars, such as fucose attached to the penultimate galactose in blood group B substance.

SPECIFICATIONS

Molecular Weight	120
Extinction Coefficient	1.33
Inhibiting or Eluting Sugar	GalNAc
Unit Size	10 mg, 25 mg
Storage Instructions	2-8 °C
Sugar Specificity	Terminal GalNAc epitopes and Forssman antigen

For research use only. Not intended for therapeutic or diagnostic use in animals or humans.



Usage Summary

Although many buffers can be employed for reconstituting and diluting this lectin, we recommend 10 mM HEPES buffered saline, pH 8.5, 0.1 mM CaCl₂. For preserving solutions stored at 4 °C, 0.08% sodium azide can be used.

Applications

Immunohistochemistry, Immunofluorescence

Conjugate

Unconjugated

TECHNICAL INFORMATION

Composed of four subunits of approximately equal size, soybean agglutinin is a family of closely related isolectins. This glycoprotein has a molecular weight of about 120 kDa and an isoelectric point near pH 6.0. SBA preferentially binds to oligosaccharide structures with terminal α - or β -linked *N*-acetylgalactosamine, and to a lesser extent, galactose residues. Binding can be blocked by substitutions on penultimate sugars, such as fucose attached to the penultimate galactose in blood group B substance.

An important application for SBA is the separation of pluripotent stem cells from human bone marrow. Cells fractionated by SBA do not produce graft vs host disease and can be used in bone marrow transplantation across histocompatibility barriers.

Inhibiting/Eluting Sugar: 200 mM *N*-acetylgalactosamine

CITATIONS



Powered by Bioz © 2023 See more details on Bioz

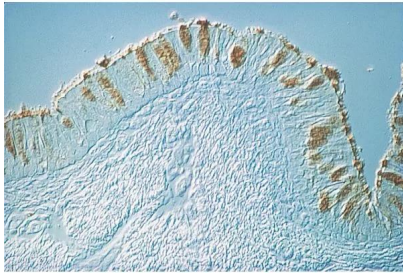
DOCUMENTS

- [Safety Data Sheet](#)
- [Lectins in Histochemistry, ELISA, and Western Blot Applications](#)
- [Download CoA](#)
- [Datasheet](#)

For research use only. Not intended for therapeutic or diagnostic use in animals or humans.



GALLERY IMAGES



For research use only. Not intended for therapeutic or diagnostic use in animals or humans.