



JACALIN, UNCONJUGATED

SKU: L-1150-25



DESCRIPTION

This lectin appears to bind only O-glycosidically linked oligosaccharides, preferring the structure galactosyl (β -1,3) N-acetylgalactosamine. This structure (the T-antigen) is the oligosaccharide to which peanut agglutinin (PNA) binds. However, unlike PNA, Jacalin will bind a mono- or disialylated form of this structure. This lectin has been used to purify human IgA. The specificity of this lectin also affords the opportunity to localize or isolate glycoproteins with O-glycosidically linked oligosaccharide side chains.

SPECIFICATIONS

Molecular Weight	66
Extinction Coefficient	1.5
Inhibiting or Eluting Sugar	Galactose
Unit Size	25 mg

For research use only. Not intended for therapeutic or diagnostic use in animals or humans.



Storage Instructions	2-8 °C
Sugar Specificity	Core 1 and core 3 O-glycans
Usage Summary	Although many buffers can be employed for reconstituting and diluting this lectin, 10 mM HEPES buffered saline, pH 8.5, 0.1 mM CaCl ₂ is recommended. For preserving solutions, stored at 4 °C, 0.08% sodium azide can be used.
Applications	Glycobiology, Mitogenic Stimulation
Conjugate	Unconjugated

TECHNICAL INFORMATION

Jacalin is a lectin composed of four subunits of approximately 16 kDa each. This lectin appears to bind only *O*-glycosidically linked oligosaccharides, preferring the structure galactosyl (β -1,3) *N*-acetylgalactosamine. This structure (the T-antigen) is the oligosaccharide to which peanut agglutinin (PNA) binds. However, unlike PNA, Jacalin will bind a mono- or disialylated form of this structure. This lectin has been used to purify human IgA. The specificity of this lectin also affords the opportunity to localize or isolate glycoproteins with *O*-glycosidically linked oligosaccharide side chains.

Inhibiting/Eluting Sugar: 800 mM galactose or 100 mM melibiose

CITATIONS



Powered by Bioz © 2023 See more details on Bioz

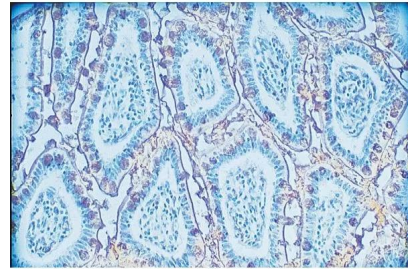
DOCUMENTS

- [Safety Data Sheet](#)
- [Lectins in Histochemistry, ELISA, and Western Blot Applications](#)
- [Download CoA](#)
- [Datasheet](#)

For research use only. Not intended for therapeutic or diagnostic use in animals or humans.



GALLERY IMAGES



For research use only. Not intended for therapeutic or diagnostic use in animals or humans.