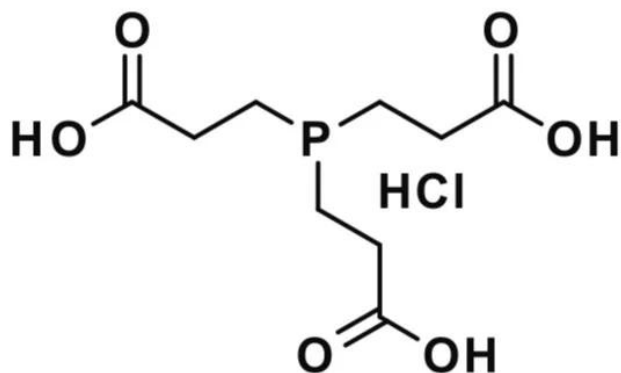




TRIS (2-CARBOXYETHYL) PHOSPHINE HYDROCHLORIDE (TCEP)

SKU: QBD-10014



DESCRIPTION

Tris(2-carboxyethyl)phosphine hydrochloride (commonly known as TCEP or TCEP-HCl), product number QBD-10014, is a water-soluble reducing agent that cleaves disulfide bonds specifically, rapidly reducing them to thiols. TCEP has several advantages over disulfide reducing agents such as dithiothreitol (DTT) and β -mercaptoethanol. These advantages include water solubility, stability in water and non-phosphate aqueous buffers (allowing the preparation of stock solutions, except in aqueous buffers containing phosphate), ease of use, biocompatibility, high reaction specificity, irreversibility of the reaction, and very rapid and efficient reaction kinetics.

SPECIFICATIONS

CAS Number	51805-45-9
Molecular Weight	286.65; single compound
Chemical Formula	C ₉ H ₁₆ ClO ₆ P
Purity	> 98%
Unit Size	1000mg, 5000mg, 25g, 100g

For research use only. Not intended for therapeutic or diagnostic use in animals or humans.



Solubility

water.

Storage Instructions

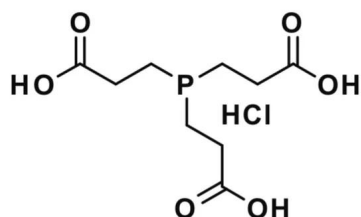
-20°C; Always let come to room temperature before opening; be careful to limit exposure to moisture and restore under an inert atmosphere; stock solutions can be prepared with dry solvent and kept for several days (freeze when not in use). dPEG® pegylation compounds are generally hygroscopic and should be treated as such. This will be less noticeable with liquids, but the solids will become tacky and difficult to manipulate, if care is not taken to minimize air exposure.

Shipping Instructions Ambient

DOCUMENTS

- [Safety Data Sheet](#)
- [Datasheet](#)

GALLERY IMAGES



For research use only. Not intended for therapeutic or diagnostic use in animals or humans.