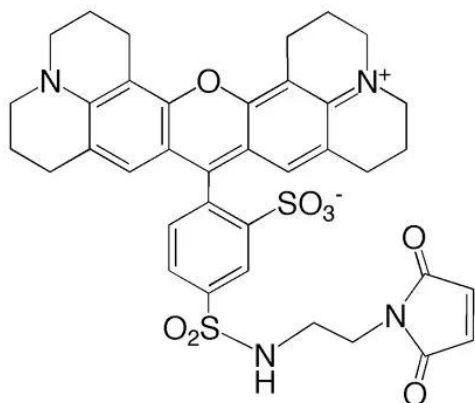




TEXAS RED™ MALEIMIDE

SKU: SP-1505-3.6



DESCRIPTION

Texas Red Maleimide can be used to label free thiol groups with this high quantum yield rhodamine derivative. This tag can either be directly visualized or detected using anti-rhodamine antibodies. Texas Red Maleimide is designed for fluorescent labeling of proteins, nucleic acids or other molecules containing one or more thiol groups.

SPECIFICATIONS

Molecular Weight	728
Maximum Emission	614nm
Maximum Excitation	592nm
Unit Size	3.6 mg
Species	DNA, Oligonucleotides, PNA, Protein, RNA
Storage Instructions	- 20°C to - 80 °C.

For research use only. Not intended for therapeutic or diagnostic use in animals or humans.



Tag/Group Incorporated	Texas Red
Reactive Group	Thiol Group
Safety Title	WARNING: NA - www.P65Warnings.ca.gov
Source Species	DNA, Oligonucleotides, PNA, Protein, RNA

TECHNICAL INFORMATION

Molecules to be labeled with Texas Red Maleimide require free thiol groups. In the case of proteins, Texas Red Maleimide will react with exposed cysteine residues. Alternatively, free thiols may be generated by reducing disulfide bonds or by modifying other reactive groups such as primary amines with compounds like Traut's reagent (2-iminothiolane).

For labeling nucleic acids, thiols can be introduced into DNA, RNA, or oligonucleotides using the 5' EndTag™ or 3' EndTag™ nucleic acid labeling systems.

This fluorescent label is a high quantum yield rhodamine derivative that can be directly visualized. The label can also be detected, and the signal amplified, using our affinity-purified antibody conjugates to rhodamine. (Excitation maximum at 595 nm; emission maximum at 615 nm).

CITATIONS



Powered by Bioz © 2023 See more details on Bioz

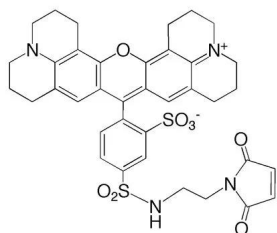
DOCUMENTS

- [Texas Red Maleimide \(User Guide\)](#)
- [Safety Data Sheet](#)
- [Download CoA](#)
- [Datasheet](#)

For research use only. Not intended for therapeutic or diagnostic use in animals or humans.



GALLERY IMAGES



For research use only. Not intended for therapeutic or diagnostic use in animals or humans.