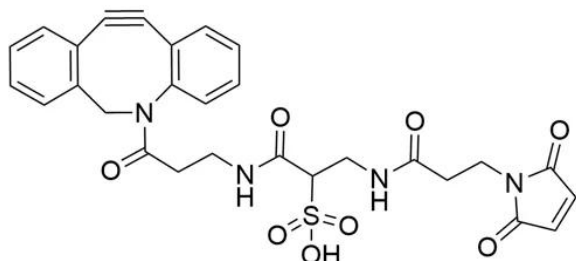


SULFO DBCO-MALEIMIDE

SKU: CCT-1230



Description

Sulfo DBCO-Maleimide a water-soluble reagent that enables simple and efficient incorporation of DBCO moiety onto cysteine-containing peptides or other thiol-containing molecules. The hydrophilic sulfonated spacer arm greatly improves water solubility of DBCO derivatized molecules, in many cases making it completely soluble in aqueous media. A short spacer arm adds minimal mass to modified molecules.

Specifications

Unit Size	10 mg, 25 mg, 100 mg, 500 mg
Molecular weight	578.59
Chemical composition	C ₂₈ H ₂₆ N ₄ O ₈ S
CAS	N/A
Solubility	Water, DMSO, DMF
Purity	>95% (HPLC)
Appearance	Slightly grey crystalline
Storage Conditions	-20°C. Desiccate
Shipping Conditions	Ambient temperature

For research use only. Not intended for animal or human therapeutic or diagnostic use.

For research use only. Not intended for animal or human therapeutic or diagnostic use.