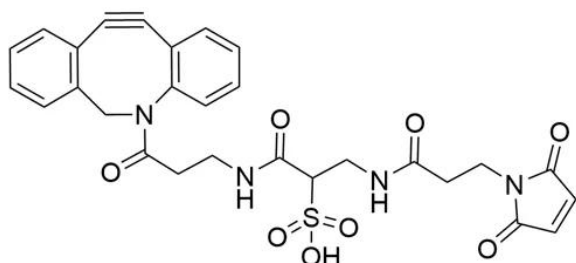




## SULFO DBCO-MALEIMIDE

**SKU:** CCT-1230



---

## DESCRIPTION

*Sulfo* DBCO-Maleimide a water-soluble reagent that enables simple and efficient incorporation of DBCO moiety onto cysteine-containing peptides or other thiol-containing molecules. The hydrophilic sulfonated spacer arm greatly improves water solubility of DBCO derivatized molecules, in many cases making it completely soluble in aqueous media. A short spacer arm adds minimal mass to modified molecules.

## SPECIFICATIONS

<b>CAS Number</b>	N/A
<b>Molecular Weight</b>	679.79
<b>Molecular Formula</b>	C <sub>34</sub> H <sub>41</sub> N <sub>5</sub> O <sub>8</sub> S
<b>Appearance</b>	Slightly grey crystalline
<b>Chemical Formula</b>	C <sub>34</sub> H <sub>41</sub> N <sub>5</sub> O <sub>8</sub> S
<b>Purity</b>	>95% (HPLC)
<b>Unit Size</b>	10 mg, 25 mg, 100 mg, 500 mg
<b>Solubility</b>	Water, DMSO, DMF

**For research use only. Not intended for therapeutic or diagnostic use in animals or humans.**



**Storage Instructions**

-20°C. Desiccate

**Shipping Conditions**

Ambient temperature

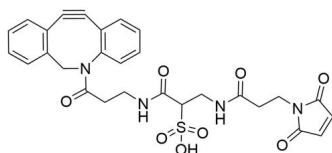
**Shipping Instructions**

Ambient temperature

## DOCUMENTS

- [Safety Data Sheet](#)
- [Download CoA](#)
- [User Guide](#)
- [Datasheet](#)

## GALLERY IMAGES



**For research use only. Not intended for therapeutic or diagnostic use in animals or humans.**