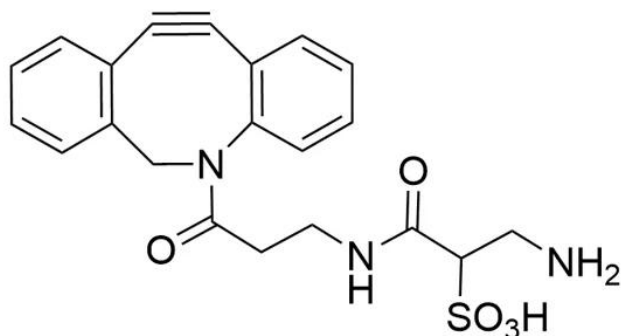




SULFO DBCO-AMINE

SKU: CCT-1227



DESCRIPTION

Sulfo DBCO-Amine is a water-soluble building block used to derivatize carboxyl-containing molecules or activated esters (e.g. NHS esters) with DBCO moiety through a stable amide bond. The hydrophilic sulfonated spacer arm greatly improves water solubility of DBCO derivatized molecules, in many cases making it completely soluble in aqueous media. A short spacer arm adds minimal mass to modified molecules.

SPECIFICATIONS

CAS Number	N/A
Molecular Weight	427.47
Appearance	Slightly yellow to slightly grey crystalline
Chemical Formula	C ₂₁ H ₂₁ N ₃ O ₅ S
Purity	>95% (HPLC)
Unit Size	10 mg, 25 mg, 100 mg, 1000 mg
Solubility	Water, DMSO, DMF
Storage Instructions	-20°C. Desiccate

For research use only. Not intended for therapeutic or diagnostic use in animals or humans.



Shipping Conditions

Frozen

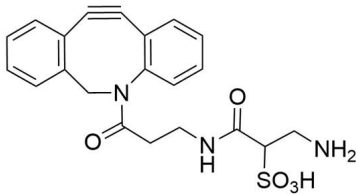
Shipping Instructions

Frozen

DOCUMENTS

- [Safety Data Sheet](#)
- [Download CoA](#)
- [Datasheet](#)

GALLERY IMAGES



For research use only. Not intended for therapeutic or diagnostic use in animals or humans.