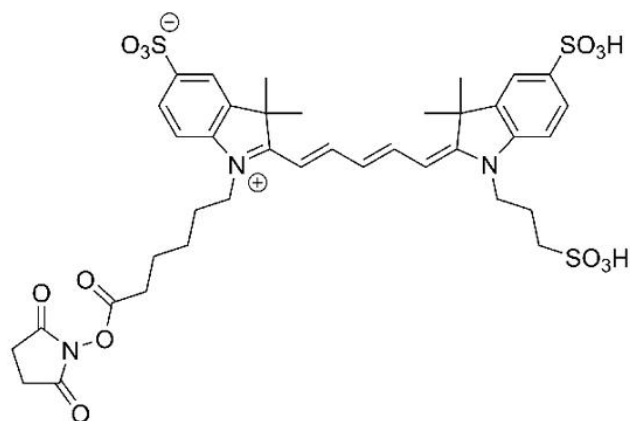


SULFO-CY5 NHS ESTER

SKU: FP-1675



Description

633/647



Laser
line

Cy5



Common
filter set

650



Excitation
max

665



Emission
max

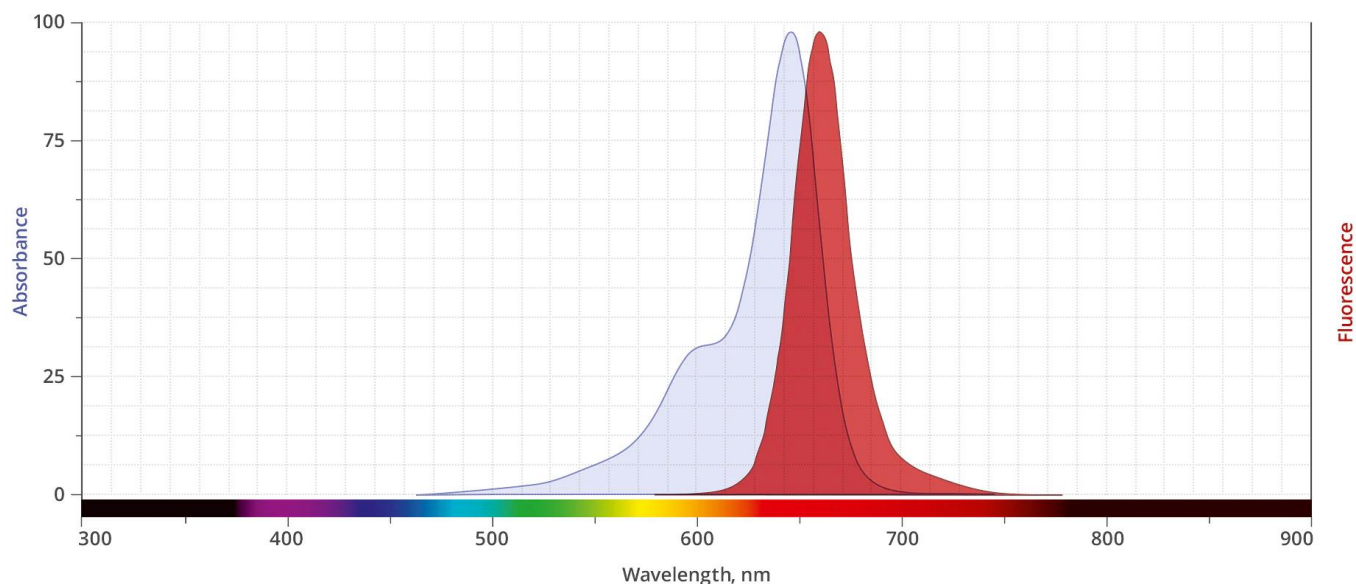
Sulfo-Cy5 dye is one of the most popular far-red fluorescent dyes. It is often a reagent of choice for protein and peptide labeling. Sulfo-Cy5 dye is a water-soluble, bright, far-red-fluorescent dye with excitation ideally suited for the 633 nm or 647 nm laser lines. Sulfo-Cy5 conjugates of antibodies, peptides, and proteins are pH insensitive from pH 4 to pH 10. A significant advantage to using long wavelength dyes such as Cy5 or AF 647 dye over other fluorophores is the low autofluorescence of biological specimens in this region of the spectrum.

The NHS ester (or succinimidyl ester) is the most popular amine reactive group for labeling with the primary amines of proteins (Lys), amine-modified oligonucleotides, and other amine-containing molecules. Sulfo-Cy5 conjugates are recommended for detection of moderate-to-high

For research use only. Not intended for animal or human therapeutic or diagnostic use.

abundance targets. For detection of low-abundance biological targets we recommend using AZDye 647 NHS Ester analog, or IR 650 NHS Ester, which can be attached to proteins at high molar ratios without significant self-quenching, enabling brighter conjugates and more sensitive detection.

Abs/Em Spectra



Specifications

Unit Size	1 mg, 5 mg, 25 mg, 100 mg
Reactivity	Primary amine
Abs/Em Maxima	648/671 nm
Extinction coefficient	250,000 cm ⁻¹ M ⁻¹
Solubility	Water, DMSO, DMF
Spectrally similar dyes	Alexa Fluor® 647, DyLight® 649,
Molecular weight	847.97
Storage Conditions	-20°C.
Shipping Conditions	Ambient temperature

For research use only. Not intended for animal or human therapeutic or diagnostic use.