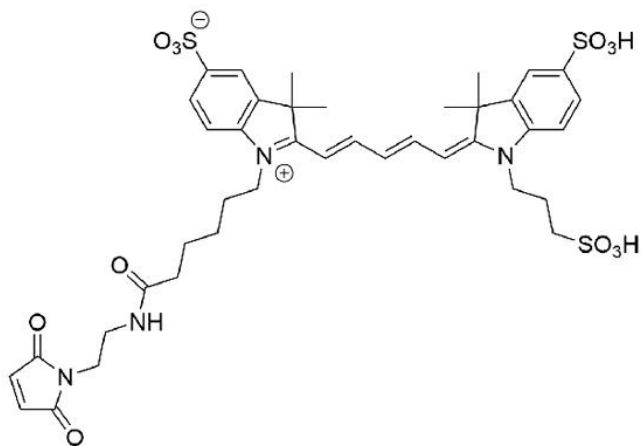


# SULFO CY5 MALEIMIDE

SKU: FP-1676



## Description

**633/647**



Laser  
line

**Cy5**



Common  
filter set

**650**



Excitation  
max

**665**



Emission  
max

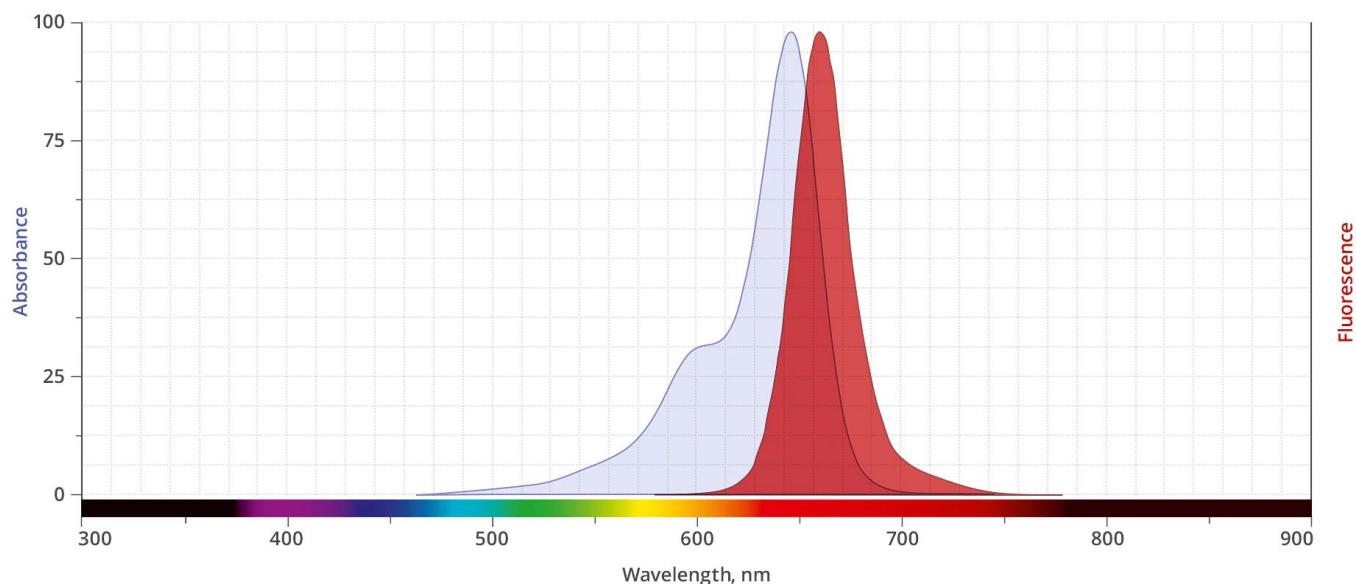
Sulfo Cy5 Maleimide is a water-soluble, bright, far-red-fluorescent dye with excitation ideally suited for the 633 nm or 647 nm laser lines. A significant advantage to using long wavelength dyes such as Sulfo Cy5, AZDye 647 or IR 650 dye over other fluorophores is the low autofluorescence of biological specimens in this region of the spectrum.

Maleimide is the most popular sulfhydryl-reactive reactive group for conjugating the dye to a thiol group on a protein, oligonucleotide thiophosphate, or low molecular weight ligand. Sulfo Cy5 conjugates are only recommended for detection of moderate-to-high abundance targets. For detection of low-abundance biological targets we recommend using AZDye 647 Maleimide

**For research use only. Not intended for animal or human therapeutic or diagnostic use.**

or IR 647 Maleimide, which can be attached to proteins at high molar ratios without significant self-quenching, enabling brighter conjugates and more sensitive detection.

## Abs/Em Spectra



## Specifications

<b>Unit Size</b>	1 mg, 5 mg, 25 mg, 100 mg
<b>Reactivity</b>	Thiol (Cys)
<b>Abs/Em Maxima</b>	648/671 nm
<b>Extinction coefficient</b>	250,000 cm <sup>-1</sup> M <sup>-1</sup>
<b>Solubility</b>	Water, DMSO, DMF
<b>Spectrally similar dyes</b>	Alexa Fluor® 647, DyLight® 649,
<b>Molecular weight</b>	872.26
<b>Storage Conditions</b>	-20°C.
<b>Shipping Conditions</b>	Ambient temperature

**For research use only. Not intended for animal or human therapeutic or diagnostic use.**