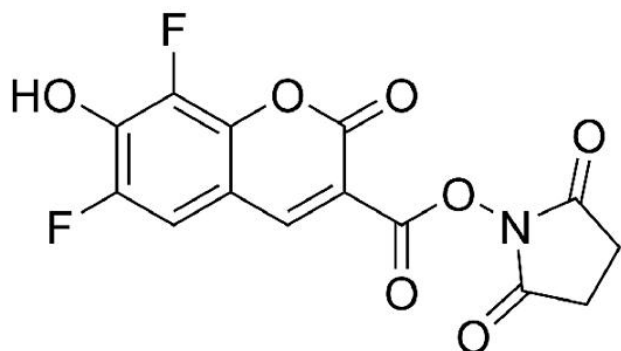




PB NHS ESTER

SKU: FP-1245



DESCRIPTION



PB dye (Pacific Blue™) is a bright, blue-fluorescent dye optimally excited by the 405 nm line of the violet laser and with excitation/emission at 410/455 nm. The excitation and emission spectrum of PB dye offers minimal overlap with green fluorophore emission spectra, making it an ideal choice for the first violet channel. Conjugates of this dye are strongly fluorescent even at neutral pH.

The amine-reactive PB NHS Ester (Pacific Blue™ succinimidyl ester) can be used to create blue-fluorescent bioconjugates with excitation/emission maxima ~410/455 nm that

For research use only. Not intended for therapeutic or diagnostic use in animals or humans.

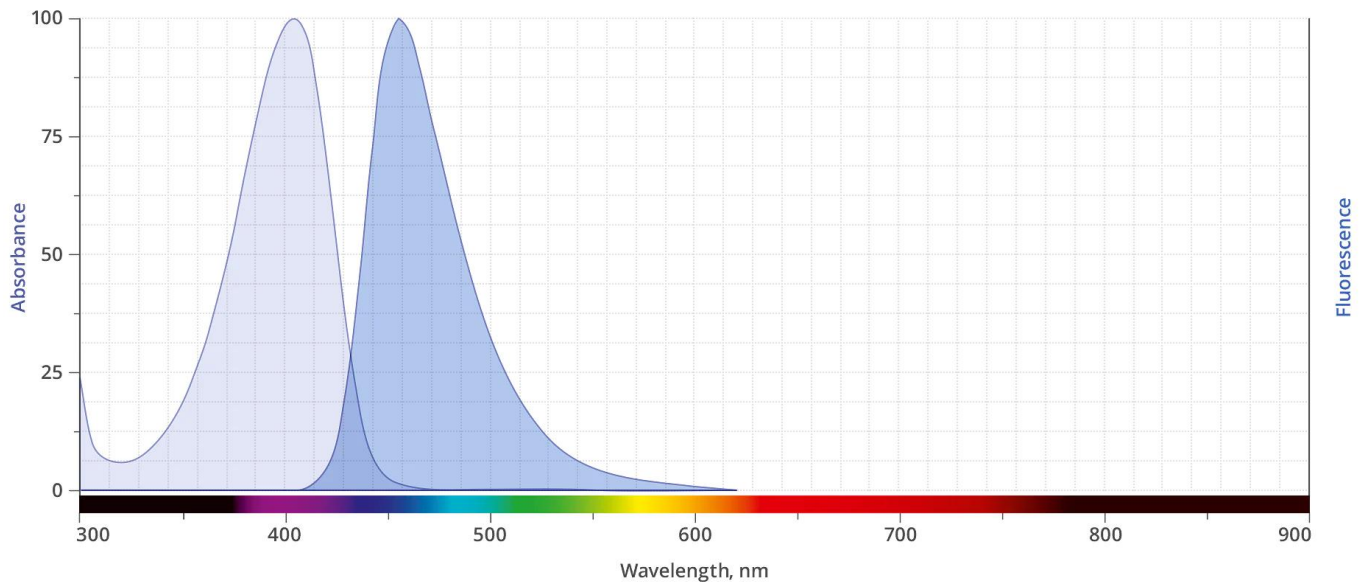


are excitable by the 405 nm spectral line of the blue diode (violet) laser. NHS Ester reacts specifically and efficiently with a primary amine (e.g., side chain of lysine residues or aminosilane-coated surfaces) at pH 7-9 to form a stable, covalent amide bond

SPECIFICATIONS

Molecular Weight	339.21
Extinction Coefficient	30,000 cm ⁻¹ M ⁻¹
Reactivity	Primary amines
Unit Size	5 mg, 25 mg, 100 mg
Solubility	DMSO, DMF
Storage Instructions	-20°C.
Spectrally Similar Dyes	Alexa Fluor® 405, DyLight® 405, Cascade Blue
Excitation/Emission Maximum	416/451 nm
Shipping Conditions	Ambient temperature
Shipping Instructions	Ambient temperature

ABS/EM SPECTRA



For research use only. Not intended for therapeutic or diagnostic use in animals or humans.

