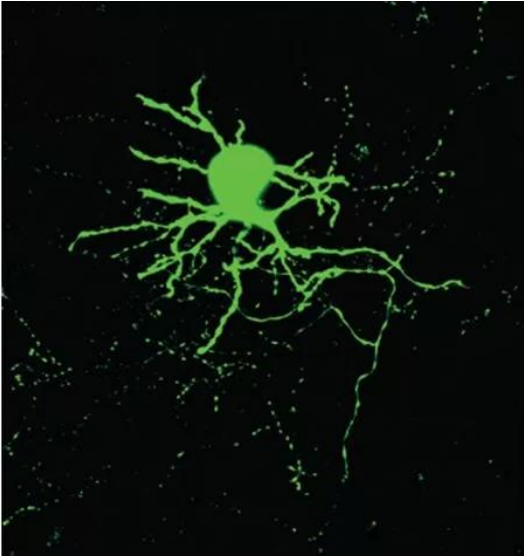




## **NEUROBIOTIN® 488 TRACER**

**SKU:** SP-1125-2



---

### **DESCRIPTION**

NEUROBIOTIN 488 Tracer is a tri-functional molecule designed for neuronal tracing and cell filling.

#### **Features:**

- Bright green fluorophore, similar in fluorescence to fluorescein, Cy2 or Alexa Fluor® 488
- Biotin label with a biotinidase-resistant linkage
- Fixable primary amine
- Used for visualizing neural architecture and for the identification of gap junction coupling
- Can be used in many types of preparations including in vivo, whole mounts, slice preparations, or cultured cells
- Can be delivered by many routes such as intracellular electrodes, microinjection, cut-loading, or scrape-loading

Advantages of NEUROBIOTIN Tracer over biocytin and other neuronal labels:

**For research use only. Not intended for therapeutic or diagnostic use in animals or humans.**



- Better solubility
- More efficiently iontophoresed
- Remains in cell longer
- Non-toxic
- Can be fixed with formalin or glutaraldehyde

## SPECIFICATIONS

<b>Molecular Weight</b>	747 g/mol
<b>Detection Method</b>	Avidin(Streptavidin)/Biotin Method, Chromogenic, Fluorescence
<b>Maximum Emission</b>	517 nm
<b>Maximum Excitation</b>	493 nm
<b>Unit Size</b>	2 mg
<b>Storage Instructions</b>	2-8 °C (desiccated). Once in solution, store frozen. This product does not contain an antimicrobial agent.
<b>Usage Summary</b>	NEUROBIOTIN 488 is soluble under the following conditions.Solvents and concentrations will require optimization depending on the application. Up to 10% in 3.0 M Tris, pH 8.8 Up to 2% in 0.25 M Tris, pH 8.8 or 0.25 M Tris, 1.0 M NaCl, pH 8.8 Up to 2% in 0.1 M bicarbonate buffer, pH 8.5 or 0.25 M bicarbonate, 1.0 M NaCl, pH 8.5 Up to 0.5% in 0.13 M cesium gluconate, 10 mM HEPES, pH 7.2 Up to 10% in DMSO
<b>Neuronal Tracer - Direction of Transport</b>	Anterograde/Retrograde

## TECHNICAL INFORMATION

NEUROBIOTIN 488 Tracer is transported along axons and fine projections and is compatible with patch clamp applications and pressure injection methods. NEUROBIOTIN 488 Tracer is readily fixed with standard aldehyde based fixatives. This tracer can be viewed directly under fluorescence microscopy.

**For research use only. Not intended for therapeutic or diagnostic use in animals or humans.**



## CITATIONS

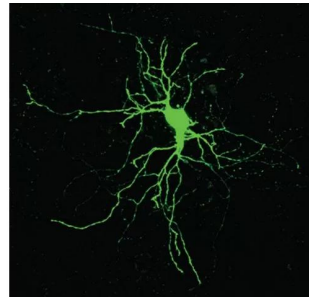
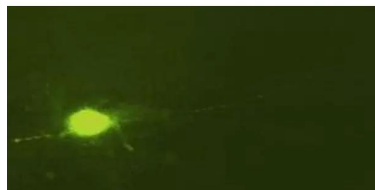
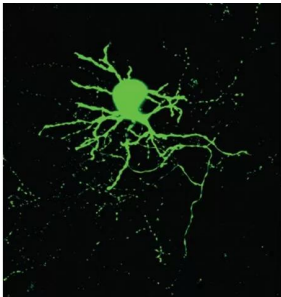


Powered by Bioz © 2023 See more details on Bioz

## DOCUMENTS

- [Safety Data Sheet](#)
- [User Guide](#)
- [Download CoA](#)
- [Datasheet](#)

## GALLERY IMAGES



**For research use only. Not intended for therapeutic or diagnostic use in animals or humans.**