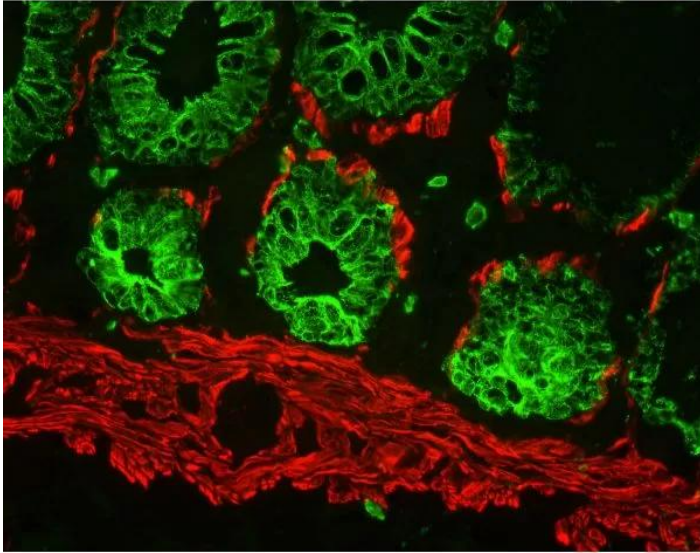




## **M.O.M. (MOUSE ON MOUSE) BLOCKING REAGENT**

**SKU:** MKB-2213-1



---

### **DESCRIPTION**

Mouse on Mouse (M.O.M.) Blocking Reagent is used to block endogenous mouse immunoglobulins in a mouse tissue section and is a key component of the M.O.M. Kits.

Features of the M.O.M. Immunodetection system:

- Significant reduction of endogenous mouse Ig staining when using mouse primary antibodies on mouse tissue
- Clear, crisp specific staining of antigens of interest
- Based on VECTASTAIN<sup>®</sup> ABC or ImmPRESS<sup>®</sup> reagent protocols
- Procedures are simple and easy to follow
- No tedious calculations or antibody prebinding steps required

**For research use only. Not intended for therapeutic or diagnostic use in animals or humans.**



## SPECIFICATIONS

<b>Blocking Action</b>	Endogenous Mouse Ig
<b>Format</b>	Concentrate
<b>Unit Size</b>	1 ml
<b>Storage Instructions</b>	2-8 °C
<b>Applications</b>	Immunohistochemistry / Immunocytochemistry, Immunofluorescence, Blotting Applications

## TECHNICAL INFORMATION

The Vector<sup>®</sup> M.O.M. Immunodetection Kits are specifically designed to reduce endogenous mouse IgG staining when using mouse primary antibodies on mouse tissue. The inability of an anti-mouse secondary antibody to distinguish between a primary antibody produced in mice and the endogenous mouse immunoglobulins present in mouse tissue results in high background staining which obscures specific staining. This problem can be essentially eliminated by using a Vector M.O.M. Kit. The result is clear, crisp specific staining of the antigens of interest. Excellent staining results for a once difficult application have now become routine with the Vector M.O.M. System.

The Vector M.O.M. Immunodetection Kits are useful in any mouse-on-mouse application, such as studies in genetically engineered mice, including transgenic and knock-out models, as well as mouse xenografts. This reagent is supplied as a 1 ml concentrate, sufficient to prepare about 25 ml of working solution or enough to stain about 125-250 sections.

The M.O.M. Kits can be also used in multiple antigen staining protocols to localize two different mouse primary antibodies on the same mouse tissue sections using fluorescent or enzyme-based detection systems. Detailed information for multiple antigen labeling can be found in our brochure, "Discovery Through Color: A Guide to Multiple Antigen Labeling", available on our website.

Four Vector M.O.M. Kits are available. The three kits based on avidin/biotin technology use the same proprietary M.O.M. Mouse Ig Blocking Reagent and the M.O.M. Biotinylated Anti-Mouse Ig Reagent, but offer a choice of an enzyme-based or fluorescent-based visualization method. M.O.M. Mouse Ig Blocking Reagent and M.O.M. Biotinylated Anti-Mouse Ig Reagent are also available separately.

**For research use only. Not intended for therapeutic or diagnostic use in animals or humans.**



The Vector M.O.M. ImmPRESS Kit contains our proprietary M.O.M. Mouse Ig Blocking Reagent paired with a specialized, ready-to-use, one-step, non-biotin M.O.M. ImmPRESS Peroxidase Polymer reagent.

Optimal staining results are obtained when this reagent is paired with the special M.O.M. Biotinylated Anti-Mouse Ig Reagent or the biotin-free, one-step micropolymer detection reagent, ImmPRESS Anti-Mouse Ig Reagent (MPX-2402).

## CITATIONS

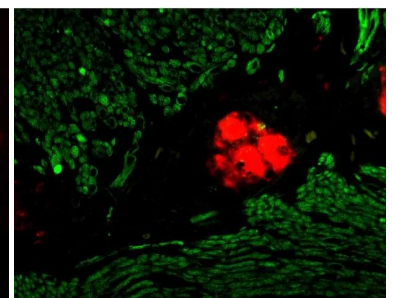
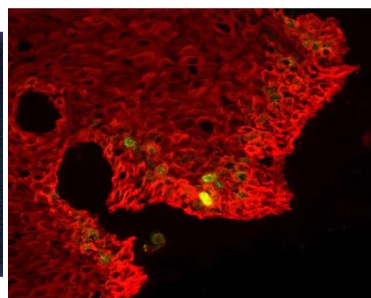
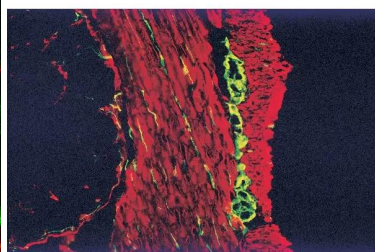
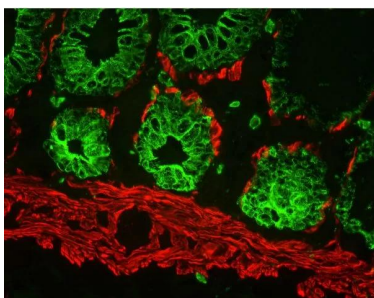


Powered by Bioz © 2023 See more details on Bioz

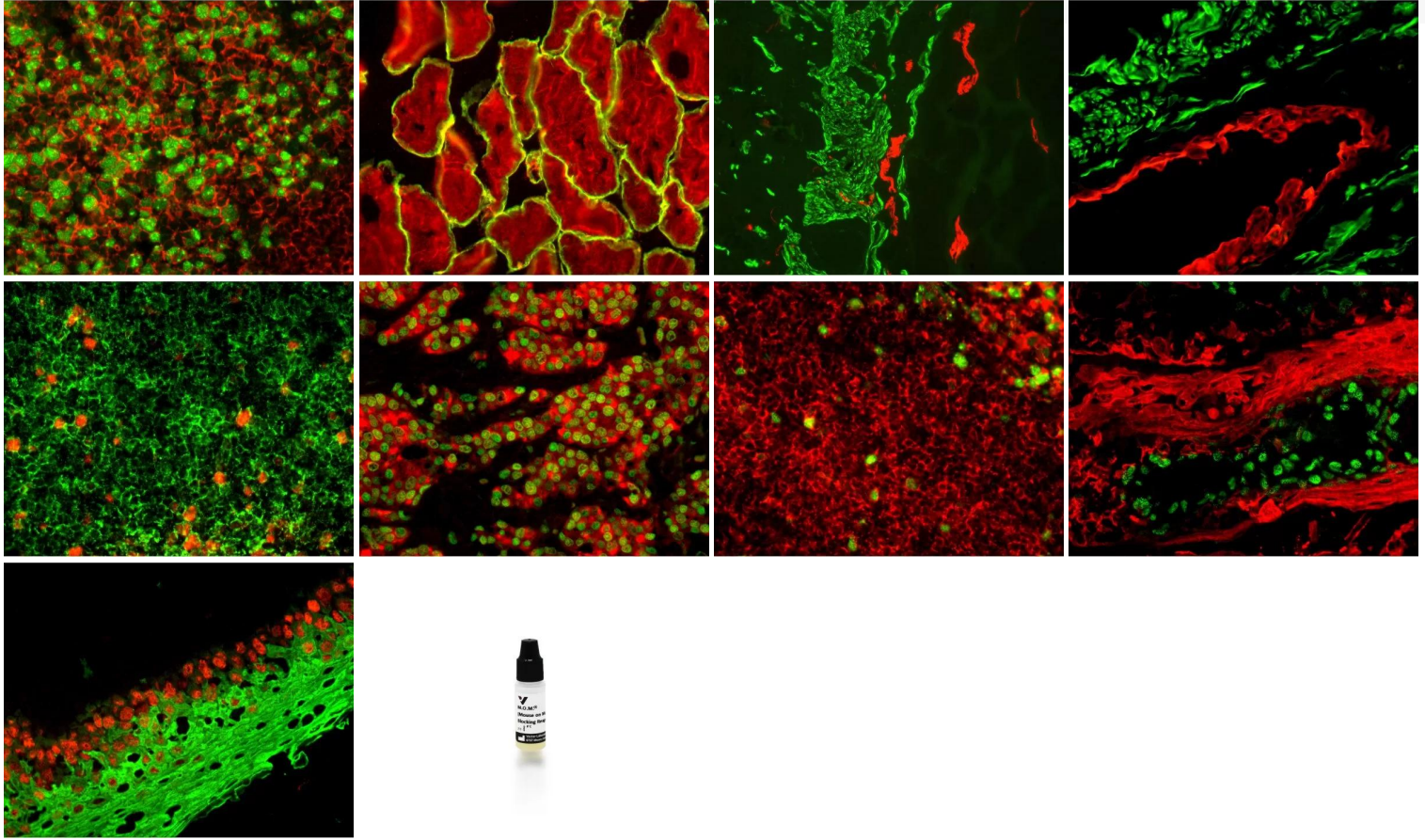
## DOCUMENTS

- [M.O.M. \(Mouse on Mouse\) Troubleshooting Guide](#)
- [Safety Data Sheet](#)
- [Download CoA](#)
- [Datasheet](#)

## GALLERY IMAGES



**For research use only. Not intended for therapeutic or diagnostic use in animals or humans.**



**For research use only. Not intended for therapeutic or diagnostic use in animals or humans.**

[M.O.M. \(Mouse on Mouse\) Blocking Reagent](https://vectorlabs.com/products/mouse-on-mouse-m-o-m-blocking-reagent/)

<https://vectorlabs.com/products/mouse-on-mouse-m-o-m-blocking-reagent/>