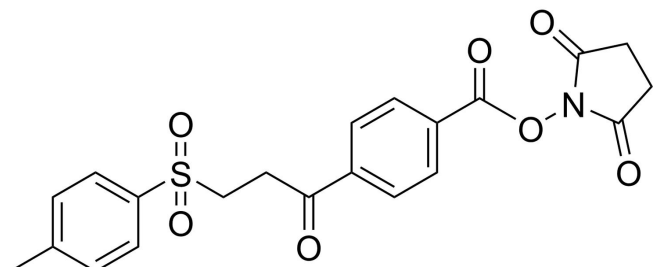


MONO-SULFONE NHS ESTER

SKU: CCT-1507



Description

Mono-sulfone is a thiol-specific labeling reagent that undergoes alkylation to generate a thio-ether bond between the protein and mono-sulfone activated reagent. Once mono-sulfone reagent is conjugated to a protein or peptide, exchange reactions leading to deconjugation can be easily avoided by treating the conjugate with a mild reducing agent in a way analogous to the process used for conjugation reactions involving reductive amination.

Specifications

Unit Size	1000 mg, 5 g
Molecular weight	492.44
Chemical composition	C ₂₁ H ₁₉ N ₁ O ₇ S
CAS	N/A
Solubility	DMSO, DMF, DCM, THF, Chloroform
Purity	>95% (HPLC)
Appearance	Grey solid
Storage Conditions	-20°C. Desiccate
Shipping Conditions	Ambient temperature

For research use only. Not intended for animal or human therapeutic or diagnostic use.