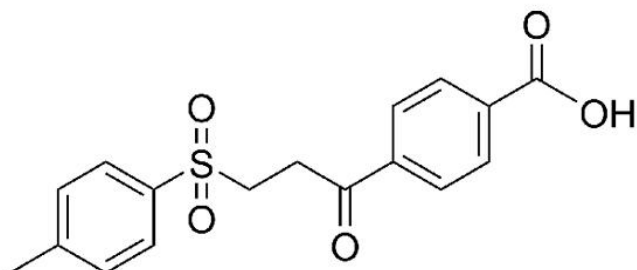


# MONO-SULFONE ACID

**SKU:** CCT-1506



## Description

Mono-sulfone is a thiol-specific labeling reagent that undergoes alkylation to generate a thio-ether bond between the protein and mono-sulfone activated reagent. Once mono-sulfone reagent is conjugated to a protein or peptide, exchange reactions leading to deconjugation can be easily avoided by treating the conjugate with a mild reducing agent in a way analogous to the process used for conjugation reactions involving reductive amination.

## Specifications

<b>Unit Size</b>	1000 mg, 5 g
<b>Molecular weight</b>	332.37
<b>Chemical composition</b>	C <sub>17</sub> H <sub>16</sub> O <sub>5</sub> S
<b>CAS</b>	N/A
<b>Solubility</b>	DMSO, DMF
<b>Purity</b>	>95% (HPLC)
<b>Appearance</b>	Grey solid
<b>Storage Conditions</b>	-20°C. Desiccate
<b>Shipping Conditions</b>	Ambient temperature

---

**For research use only. Not intended for animal or human therapeutic or diagnostic use.**