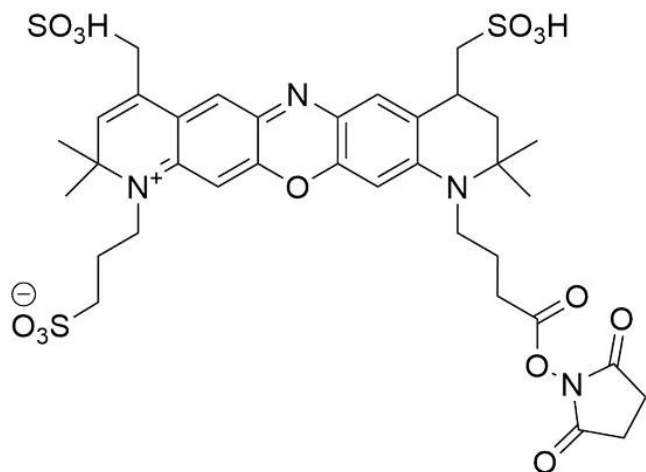


MB 680R NHS ESTER

SKU: FP-1671



Description

633/647



Laser
line

Cy5.5



Common
filter set

673



Excitation
max

694



Emission
max

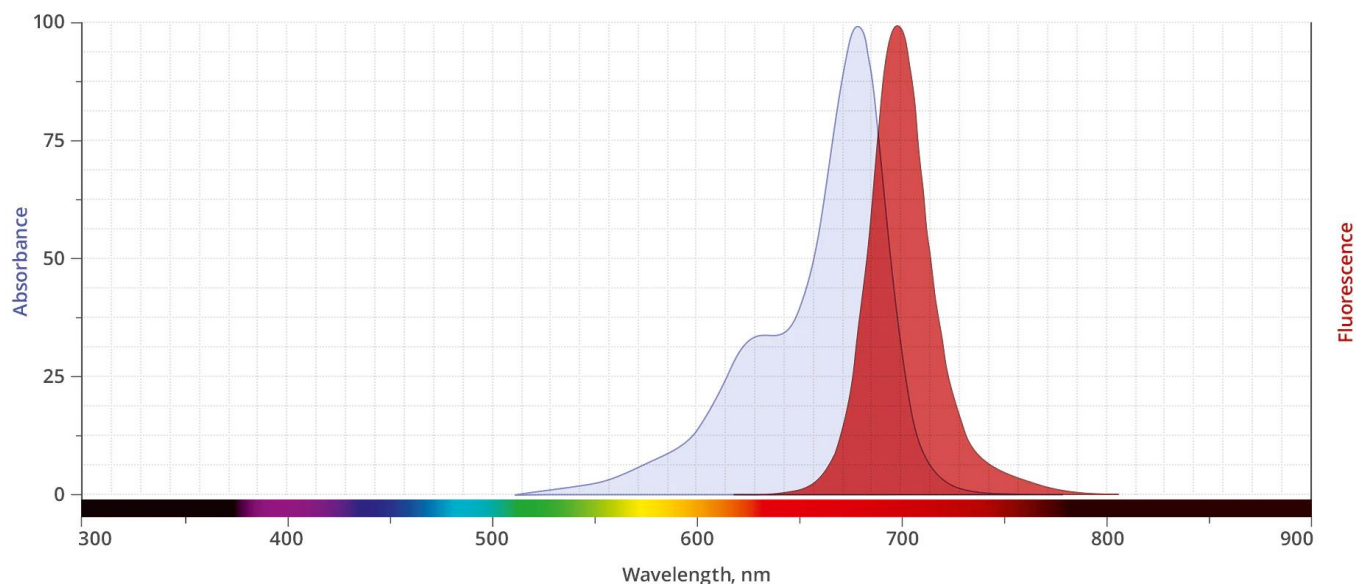
MB™ 680R is a bright and photostable far-red dye that emits fluorescence at about 685 nm in the borderline spectral region between far-red and near-IR. Although the absorption maximum is at around 680 nm, this dye can be sufficiently excited by the 633 or 635 nm laser. MB™ 680R dye is water soluble and pH-insensitive from pH 4 to pH 10. MB 680R is a rhodamine-based dye, and like rhodamine dyes in general, it is exceptionally photostable. The superior photostability and excellent brightness of MB 680R make the dye an ideal choice for confocal microscopy and other demanding applications.

The NHS Ester reacts specifically and efficiently with a primary amine (e.g., side chain of lysine

For research use only. Not intended for animal or human therapeutic or diagnostic use.

residues or aminosilane-coated surfaces) at pH 7-9 to form a stable, covalent amide bond. The NHS ester (or succinimidyl ester) is the most popular tool for conjugating dyes to the primary amines of protein or antibody (Lys), amine-modified oligonucleotides, and other amine-containing molecules.

Abs/Em Spectra



Specifications

Unit Size	1 mg, 5 mg, 25 mg, 100 mg
Reactivity	Primary amine
Abs/Em Maxima	685/709 nm
Extinction coefficient	135,000 cm ⁻¹ M ⁻¹
Solubility	Water, DMSO, DMF
Spectrally similar dyes	Alexa Fluor® 680, CF® 680R
Molecular weight	839.91 (protonated)
Storage Conditions	-20°C.
Shipping Conditions	Ambient temperature

For research use only. Not intended for animal or human therapeutic or diagnostic use.