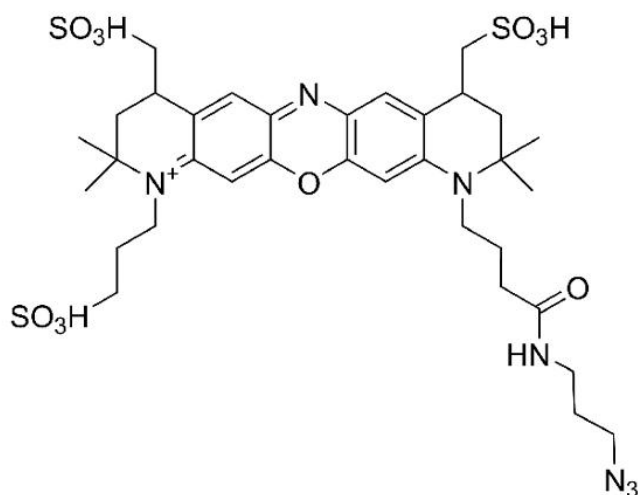




MB 660R AZIDE

SKU: CCT-1463

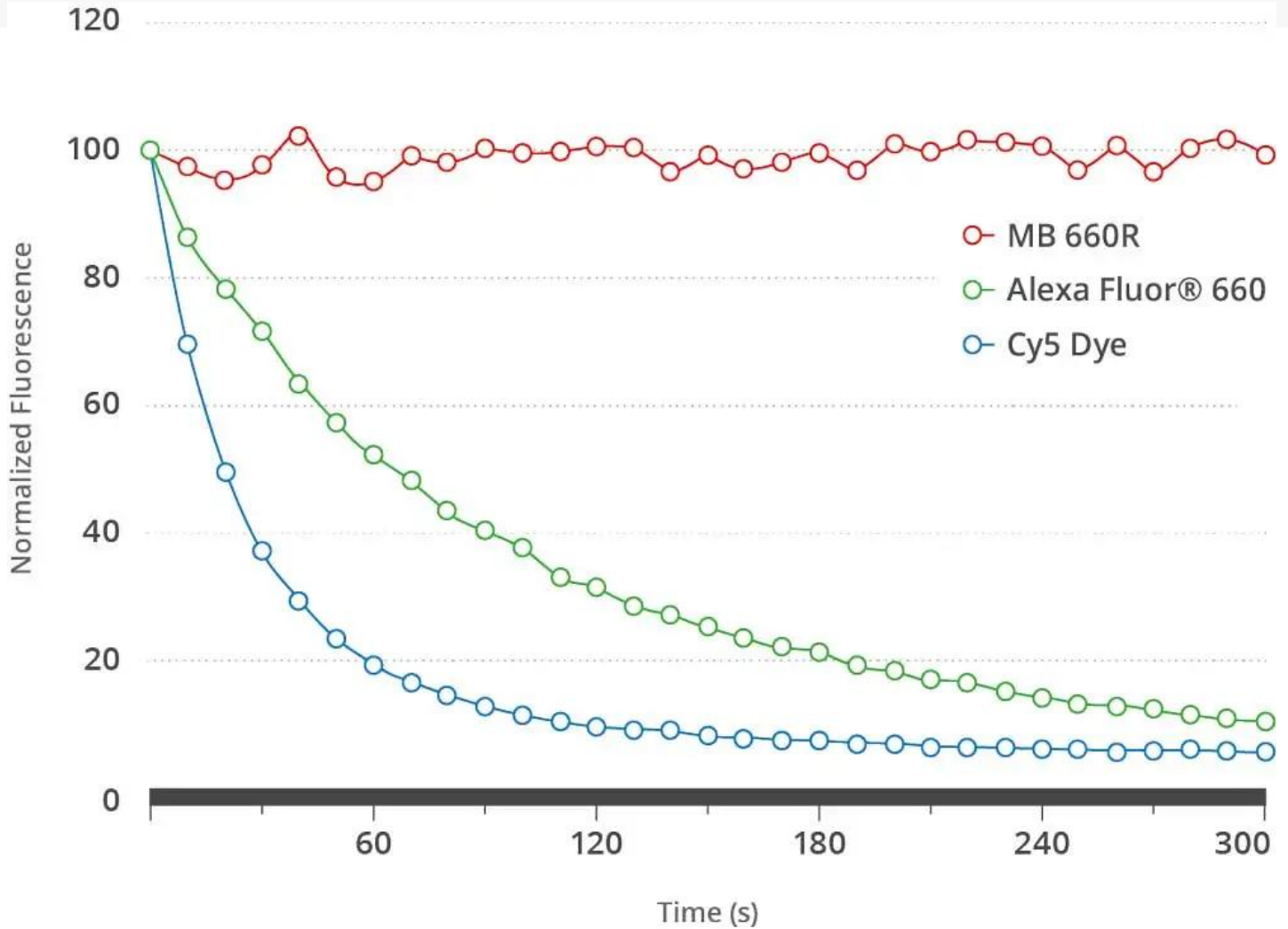


DESCRIPTION

MB 660R Azide is a bright and very photostable probe routinely used for imaging of alkyne-containing biomolecules. MB 660R Azide can be reacted with terminal alkynes via a copper-catalyzed click reaction (CuAAC). It also reacts with strained cyclooctyne via a copper-free “click chemistry” reaction to form a stable triazole and does not require Cu-catalyst or elevated temperatures. The brightness and photostability of this dye are best suited to direct imaging of low-abundance targets.

MB 660R is a bright and photostable far-red dye that emits fluorescence at about 685 nm in the borderline spectral region between far-red and near-IR. Although the absorption maximum is at around 665 nm, this dye can be sufficiently excited by the 633 or 635 nm laser. MB 660R dye is water soluble and pH-insensitive from pH 4 to pH 10. MB 660R is a rhodamine-based dye, and like rhodamine dyes in general, it is exceptionally photostable (Figure 1). The superior photostability and excellent brightness of MB 660R make the dye an ideal choice for confocal microscopy and other demanding applications.

For research use only. Not intended for therapeutic or diagnostic use in animals or humans.



MB 660R dye spectrally is almost identical to Alexa Fluor® 660 and CF® 660R Dye and can be used a less expensive alternative to these dyes.

Alexa Fluor® is a registered trademark of Thermo Fisher Scientific. CF® Dye is a registered trademark of Biotium.

SPECIFICATIONS

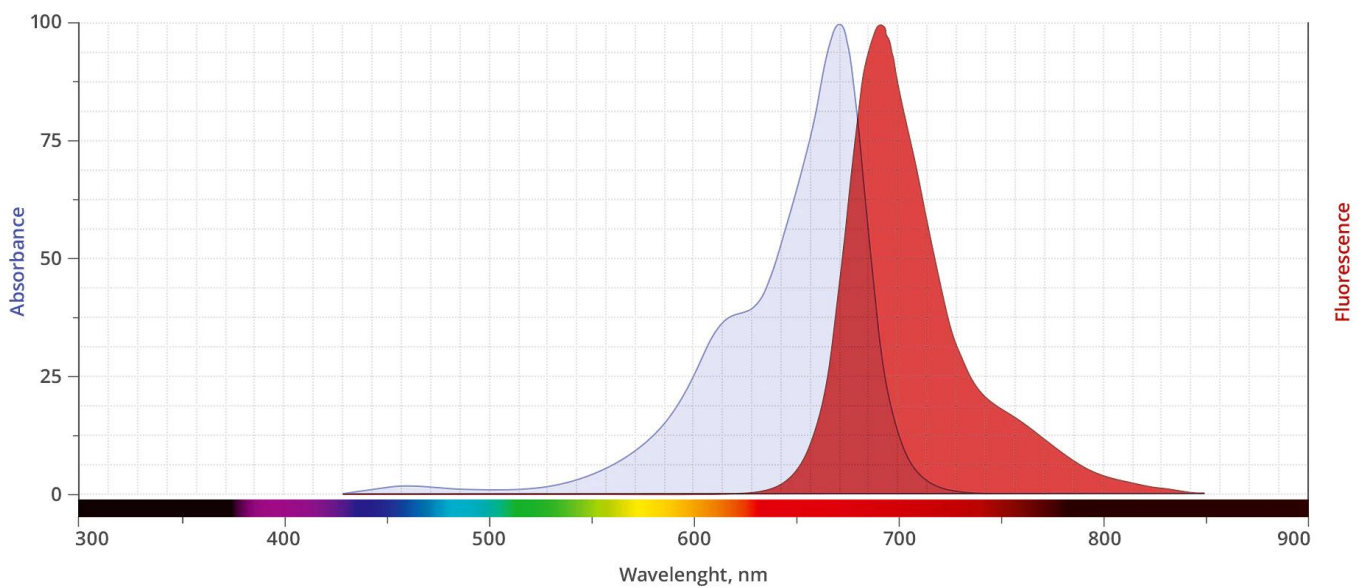
CAS Number	N/A
Molecular Weight	640.65 (protonated) 706.60 (sodium salt)
Appearance	Yellow solid
Extinction Coefficient	35,000

For research use only. Not intended for therapeutic or diagnostic use in animals or humans.



Purity	>95% (HPLC)
Unit Size	1 mg, 5 mg, 25 mg
Solubility	Water, DMSO, DMF
Storage Instructions	-20°C. Desiccate
Spectrally Similar Dyes	Alexa Fluor® 405, CF® 405, Cascade Blue®, DyLight® 405
Laser Line	405 nm
Excitation/Emission Maximum	402/424 nm
Shipping Conditions	Ambient temperature
Shipping Instructions	Ambient temperature

ABS/EM SPECTRA



DOCUMENTS

- [Safety Data Sheet](#)
- [Datasheet](#)

For research use only. Not intended for therapeutic or diagnostic use in animals or humans.

