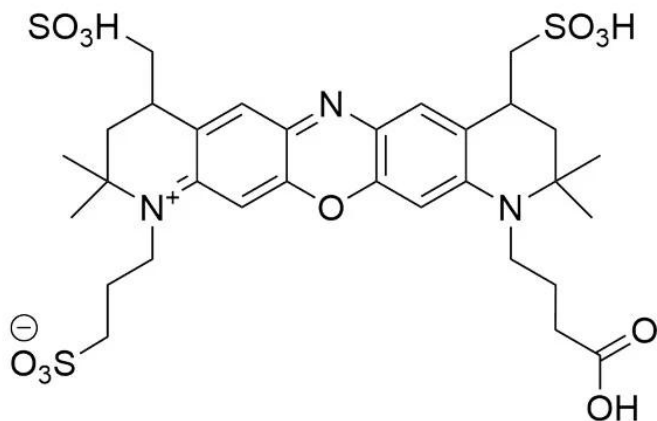




MB 660R ACID

SKU: FP-1660



DESCRIPTION

633/647



Laser
line

Cy5



Common
filter set

650



Excitation
max

665



Emission
max

MB™ 660R is a bright and photostable far-red dye that emits fluorescence at about 685 nm in the borderline spectral region between far-red and near-IR. Although the absorption maximum is at around 665 nm, this dye can be sufficiently excited by the 633 or 635 nm laser. MB™ 660R dye is water soluble and pH-insensitive from pH 4 to pH 10. MB 660R is a rhodamine-based dye, and like rhodamine dyes in general, it is exceptionally photostable (Figure 1, description tab). The superior photostability and excellent brightness of MB 660R make the dye an ideal choice

For research use only. Not intended for therapeutic or diagnostic use in animals or humans.



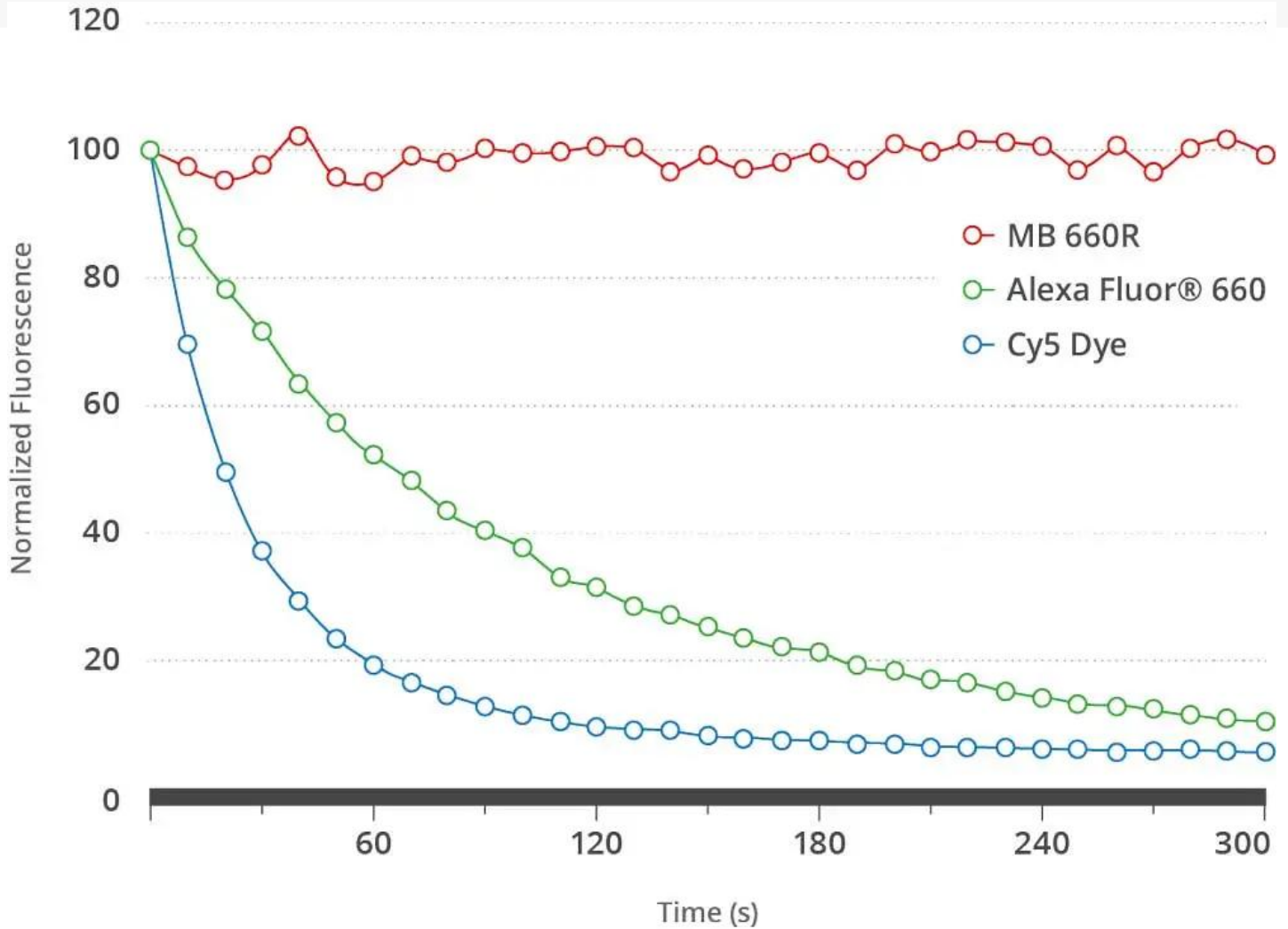
for confocal microscopy and other demanding applications.

MB™ 660R Acid often used for the preparation of custom activated esters that often are not commercially available.

MB™ 660R Acid often used for the preparation of custom activated esters that often are not commercially available. Examples of such activated esters include sulfo-NHS, TFP (2,3,5,6-Tetrafluorophenol), and STP (4-Sulfo-2,3,5,6-Tetrafluorophenol, Sodium Salt). Another common application for the non-activated carboxylic acid is peptide modification during solid phase synthesis, which usually requires in-situ activation with peptide coupling reagents, e.g. HATU.

MB™ 660R is a bright and photostable far-red dye that emits fluorescence at about 685 nm in the borderline spectral region between far-red and near-IR. Although the absorption maximum is at around 665 nm, this dye can be sufficiently excited by the 633 or 635 nm laser. MB™ 660R dye is water soluble and pH-insensitive from pH 4 to pH 10. MB 660R is a rhodamine-based dye, and like rhodamine dyes in general, it is exceptionally photostable (Figure 1). The superior photostability and excellent brightness of MB 660R make the dye an ideal choice for confocal microscopy and other demanding applications.

For research use only. Not intended for therapeutic or diagnostic use in animals or humans.



MB 660R dye spectrally is almost identical to Alexa Fluor® 660 and CF® 660R Dye and can be used a less expensive alternative to these dyes.

Alexa Fluor® is a registered trademark of Thermo Fisher Scientific. CF® Dye is a registered trademark of Biotium.

SPECIFICATIONS

Molecular Weight	743.86 (protonated)
Extinction Coefficient	92,000 cm ⁻¹ M ⁻¹
Reactivity	Primary amine
Unit Size	1 mg, 5 mg, 25 mg, 100 mg

For research use only. Not intended for therapeutic or diagnostic use in animals or humans.



Solubility

Water, DMSO, DMF

Storage Instructions

-20°C.

Spectrally Similar Dyes

Alexa Fluor® 660, CF® 680R

Excitation/Emission Maximum

665/690 nm

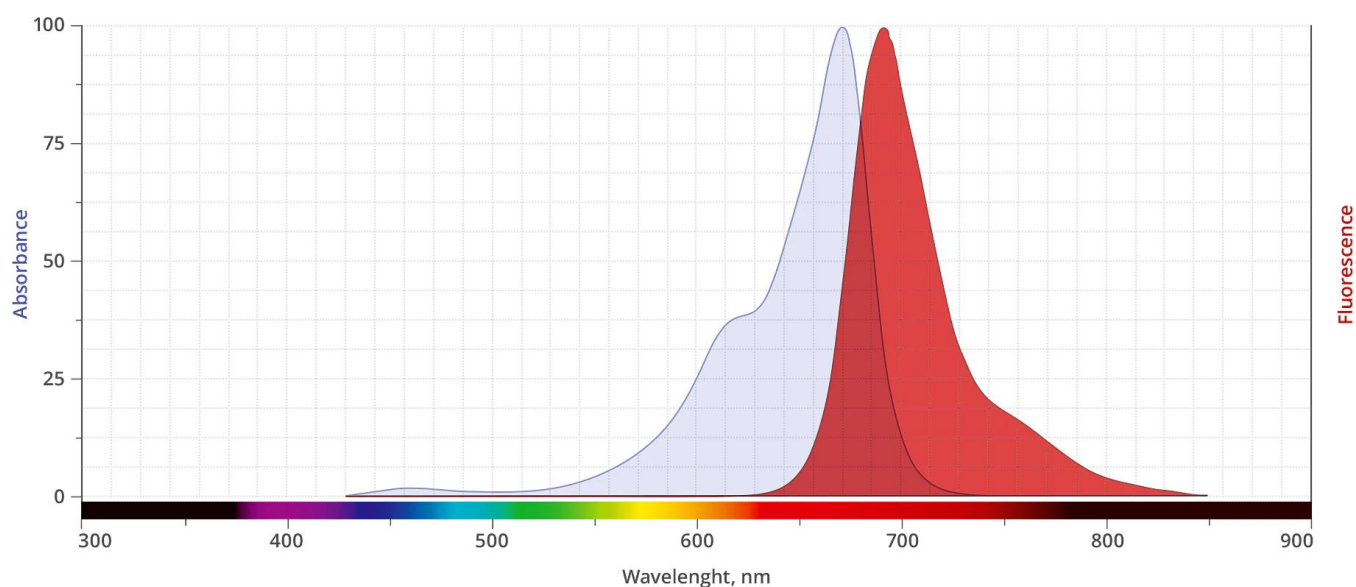
Shipping Conditions

Ambient temperature

Shipping Instructions

Ambient temperature

ABS/EM SPECTRA

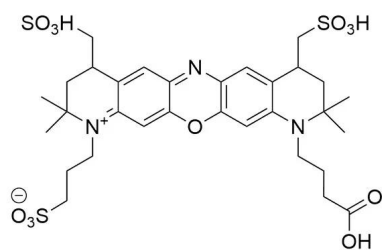


DOCUMENTS

- [Safety Data Sheet](#)
- [Datasheet](#)

GALLERY IMAGES

For research use only. Not intended for therapeutic or diagnostic use in animals or humans.



For research use only. Not intended for therapeutic or diagnostic use in animals or humans.