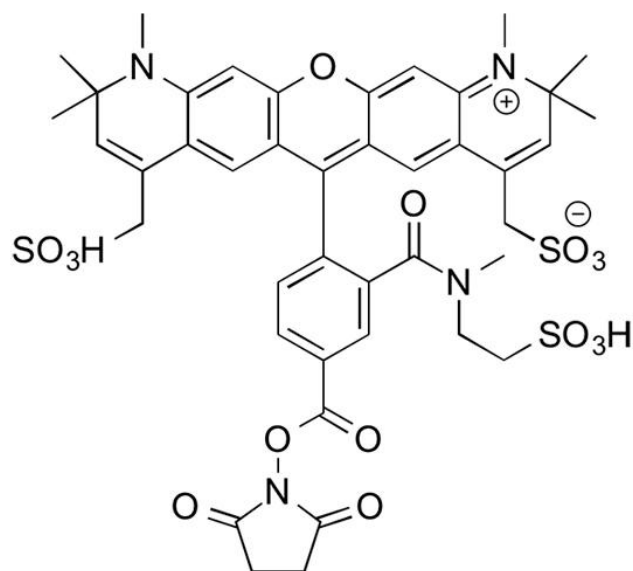


MB 594 NHS ESTER

SKU: FP-1646



Description

594



Laser
line

Texas Red



Common
filter set

601



Excitation
max

623



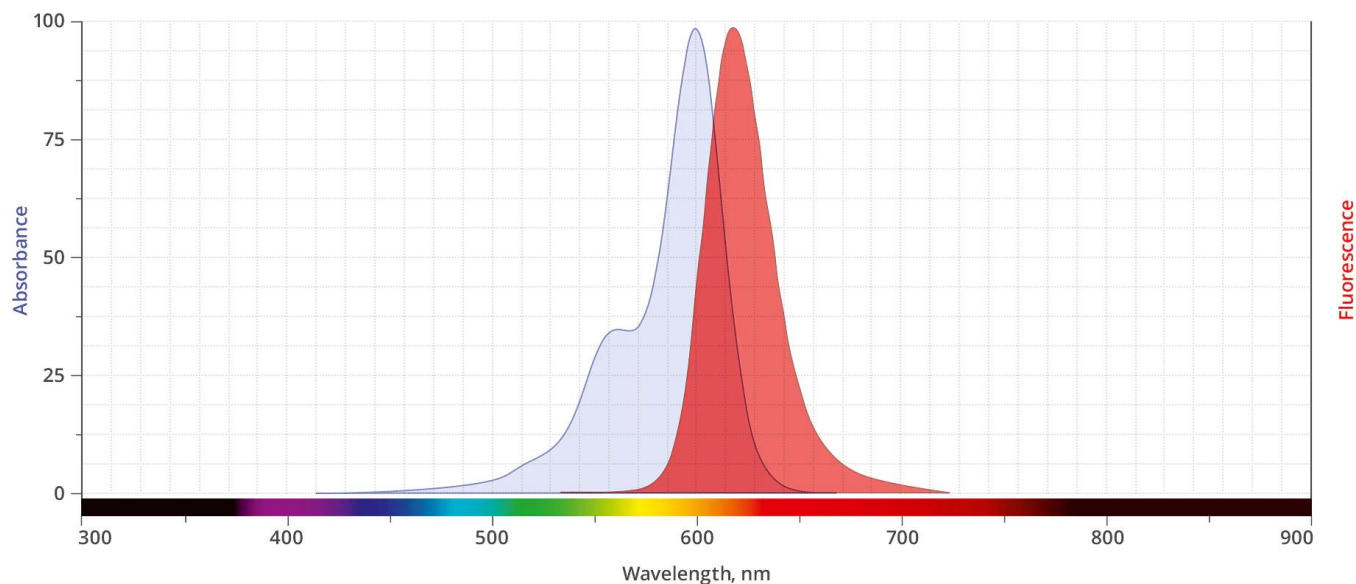
Emission
max

MB 594 NHS Ester is a very hydrophilic, water-soluble red fluorescent dye. Structurally related to Alexa Fluor® 594 dye, MB™ 594 dye contains an additional, negatively charged sulfo group (SO₃H) to improve water solubility and minimize self-quenching. Characteristic features of MB™ 594 are strong absorption, high fluorescence quantum yield, high photostability, and pH insensitivity from pH 3 to pH 10. MB™ 594 is a highly suitable dye for single-molecule detection applications and high-resolution microscopy such as PALM, dSTORM, STED etc.

For research use only. Not intended for animal or human therapeutic or diagnostic use.

The NHS Ester reacts specifically and efficiently with a [primary amine](#) (e.g., side chain of lysine residues or aminosilane-coated surfaces) at pH 7-9 to form a stable, covalent amide bond. The NHS ester (or succinimidyl ester) is the most popular tool for conjugating dyes to the primary amines of protein or antibody (Lys), amine-modified oligonucleotides, and other amine-containing molecules.

Abs/Em Spectra



Specifications

Unit Size	1 mg, 5 mg, 25 mg, 100 mg
Reactivity	Primary amine
Abs/Em Maxima	605/635 nm
Extinction coefficient	110,000 cm ⁻¹ M ⁻¹
Solubility	Water, DMSO, DMF
Spectrally similar dyes	Alexa Fluor® 594, CF® 594, Texas Red
Molecular weight	941.01
Storage Conditions	-20°C.
Shipping Conditions	Ambient temperature

For research use only. Not intended for animal or human therapeutic or diagnostic use.

For research use only. Not intended for animal or human therapeutic or diagnostic use.