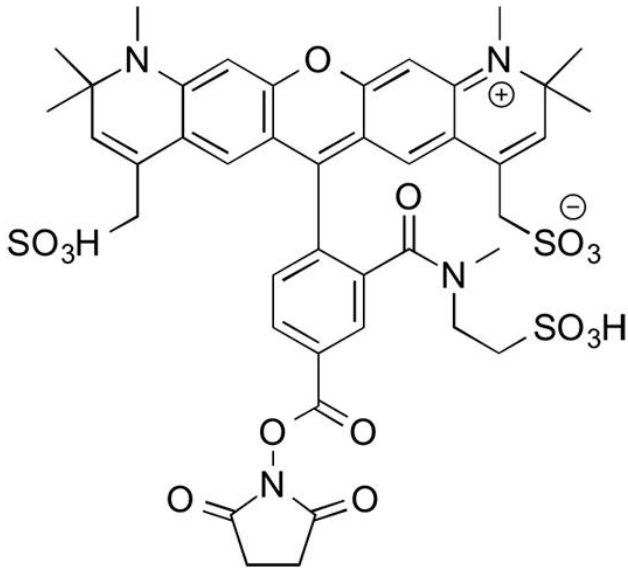


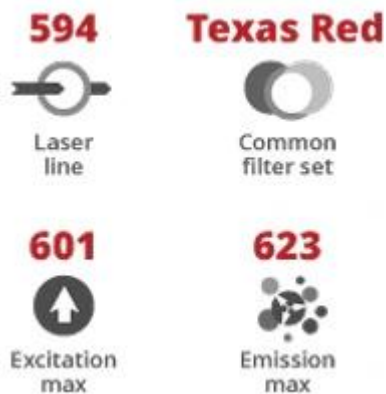


MB 594 NHS ESTER

SKU: FP-1646



DESCRIPTION



MB 594 NHS Ester is a very hydrophilic, water-soluble red fluorescent dye. Structurally related to Alexa Fluor® 594 dye, MB™ 594 dye contains an additional, negatively charged sulfo group

For research use only. Not intended for therapeutic or diagnostic use in animals or humans.



(SO₃H) to improve water solubility and minimize self-quenching. Characteristic features of MB™ 594 are strong absorption, high fluorescence quantum yield, high photostability, and pH insensitivity from pH 3 to pH 10. MB™ 594 is a highly suitable dye for single-molecule detection applications and high-resolution microscopy such as PALM, dSTORM, STED etc.

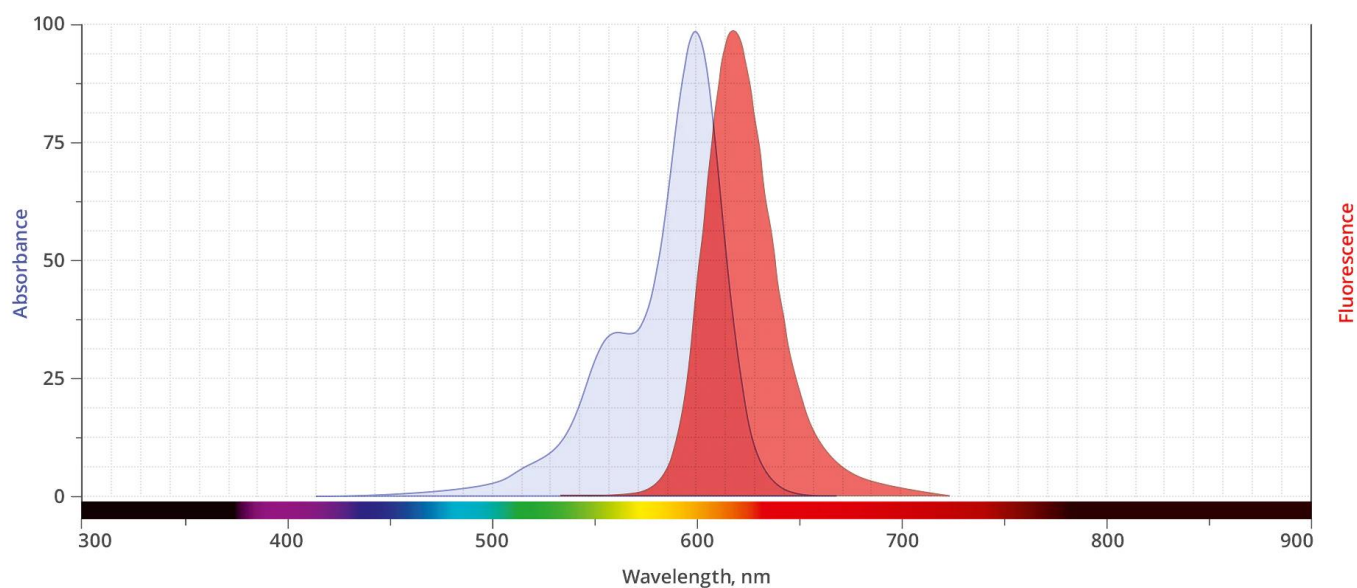
The NHS Ester reacts specifically and efficiently with a primary amine (e.g., side chain of lysine residues or aminosilane-coated surfaces) at pH 7-9 to form a stable, covalent amide bond. The NHS ester (or succinimidyl ester) is the most popular tool for conjugating dyes to the primary amines of protein or antibody (Lys), amine-modified oligonucleotides, and other amine-containing molecules.

SPECIFICATIONS

Molecular Weight	941.01
Extinction Coefficient	110,000 cm ⁻¹ M ⁻¹
Reactivity	Primary amine
Unit Size	1 mg, 5 mg, 25 mg, 100 mg
Solubility	Water, DMSO, DMF
Storage Instructions	-20°C.
Spectrally Similar Dyes	Alexa Fluor® 594, CF® 594, Texas Red
Excitation/Emission Maximum	605/635 nm
Shipping Conditions	Ambient temperature
Shipping Instructions	Ambient temperature

ABS/EM SPECTRA

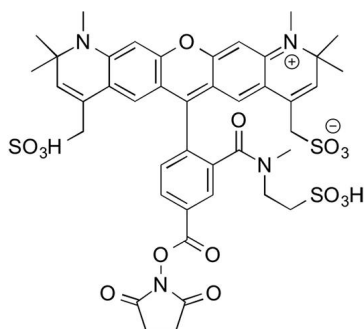
For research use only. Not intended for therapeutic or diagnostic use in animals or humans.



DOCUMENTS

- [Safety Data Sheet](#)
- [Datasheet](#)

GALLERY IMAGES



For research use only. Not intended for therapeutic or diagnostic use in animals or humans.