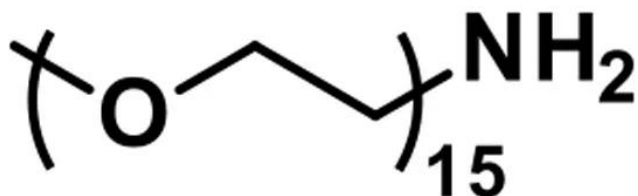




M-DPEG®₁₅-AMINE

SKU: QBD-10298



DESCRIPTION

m-dPEG®₁₅-amine, product number QBD-10298, is a non-immunogenic, water-soluble chemical modification reagent. The product contains a monodisperse, single molecular weight, discrete-length polyethylene glycol (dPEG®) chain terminated on one end with a methyl group and the other end with an amine. The amino group reacts with carboxylic acids (and their active esters) to form amide bonds. Reactions with aldehydes or ketones form a labile imine known as a Schiff base, which can be reduced to form a secondary amine. Direct conjugation of carboxylic acids and m-dPEG®₁₅-amine require a carbodiimide such as EDC. Uses for this product include passivating surfaces, coating biomolecules, and building dendrimers and other supramolecular constructs.

SPECIFICATIONS

CAS Number	32130-27-1
Molecular Weight	691.85; single compound
Chemical Formula	C ₃₁ H ₆₅ NO ₁₅
Purity	> 98%
Unit Size	100 mg, 1000 mg
Solubility	Methylene chloride, Acetonitrile, DMAC, DMSO or water.
Spacers	dPEG® Spacer is 47 atoms and 53.4 Å

For research use only. Not intended for therapeutic or diagnostic use in animals or humans.



Storage Instructions

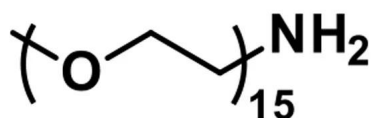
-20°C; Always let come to room temperature before opening; be careful to limit exposure to moisture and restore under an inert atmosphere; stock solutions can be prepared with dry solvent and kept for several days (freeze when not in use). dPEG® pegylation compounds are generally hygroscopic and should be treated as such. This will be less noticeable with liquids, but the solids will become tacky and difficult to manipulate, if care is not taken to minimize air exposure.

Shipping Instructions Ambient

DOCUMENTS

- [Safety Data Sheet](#)
- [Datasheet](#)

GALLERY IMAGES



For research use only. Not intended for therapeutic or diagnostic use in animals or humans.