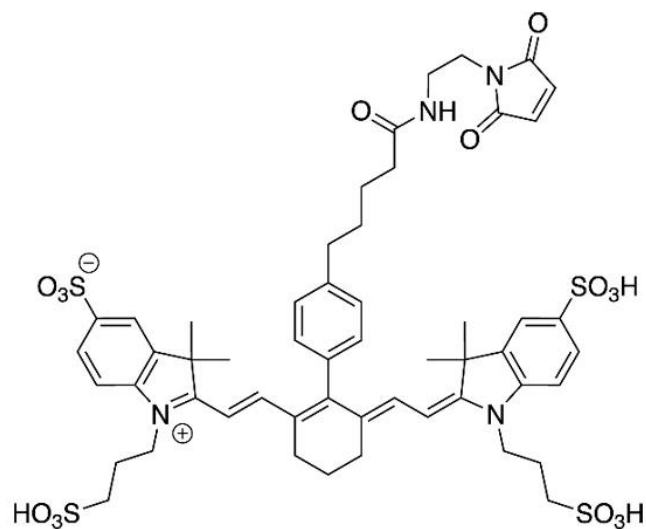


# IR 750 MALEIMIDE

SKU: FP-1557



## Description

633/647



Laser  
line

Cy7



Common  
filter set

756



Excitation  
max

776



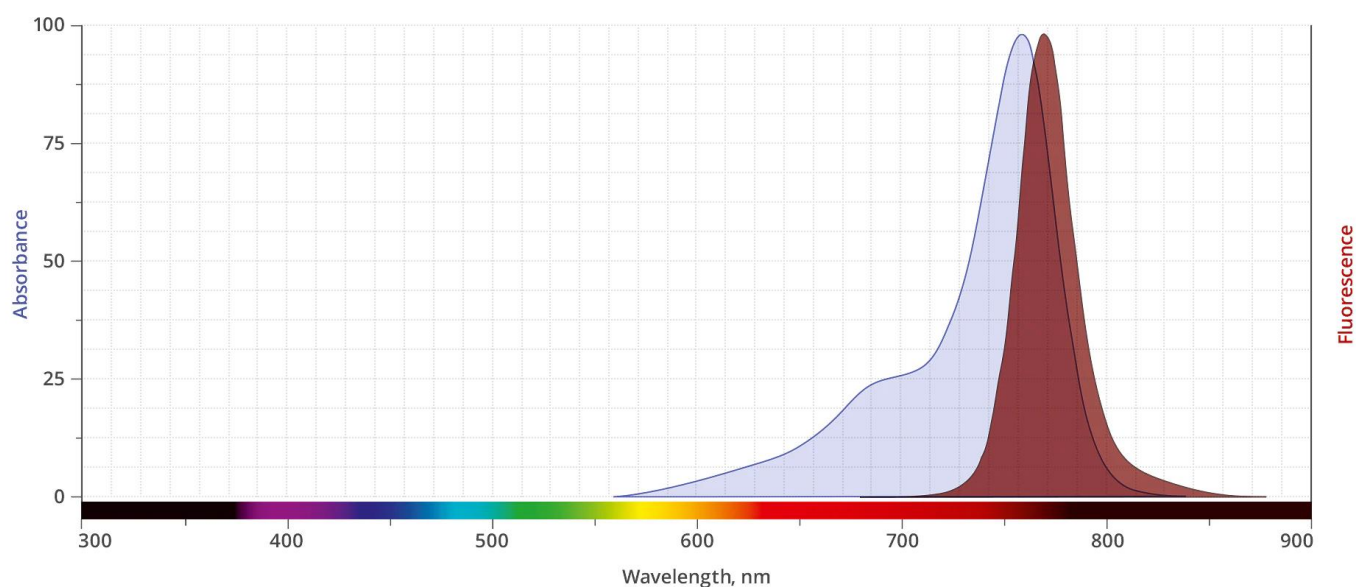
Emission  
max

IR 750 Maleimide (IRDye® 750 Maleimide analog) is a water-soluble, bright, near-IR fluorescent dye that is spectrally similar to other 750 dyes used for flow cytometry, [microscopy](#) and other applications. IR 750 conjugates ideally suited for the 633 nm laser lines or dye-pumped laser. A significant advantage to using long wavelength dyes such as Cy7® Dye or Alexa Fluor® 750 dye over other fluorophores is the low autofluorescence of biological specimens in this region of the spectrum. IR 750 conjugates are pH-insensitive over a wide molar range, helping ensure that you get stable signals in imaging and flow cytometry applications.

**For research use only. Not intended for animal or human therapeutic or diagnostic use.**

Maleimide is the most popular sulfhydryl-reactive reactive group for conjugating the dye to a thiol group on a protein, oligonucleotide thiophosphate, or low molecular weight ligand. The maleimide group specifically and efficiently reacts with reduced thiols (sulfhydryl groups, -SH) at pH 6.5 to 7.5 to form stable thioether bond. The resulting conjugates exhibit brighter fluorescence and greater photostability than the conjugates of many other spectrally similar fluorophores.

## Abs/Em Spectra



## Specifications

<b>Unit Size</b>	1 mg, 5 mg, 25 mg, 100 mg
<b>Reactivity</b>	Primary amine
<b>Abs/Em Maxima</b>	756/776 nm
<b>Extinction coefficient</b>	270,000 cm <sup>-1</sup> M <sup>-1</sup>
<b>Solubility</b>	Water, DMSO, DMF
<b>Spectrally similar dyes</b>	Cy7, Alexa Fluor® 750, IRDye® 750
<b>Molecular weight</b>	1123.33
<b>Storage Conditions</b>	-20°C.
<b>Shipping Conditions</b>	Ambient temperature

**For research use only. Not intended for animal or human therapeutic or diagnostic use.**

**For research use only. Not intended for animal or human therapeutic or diagnostic use.**