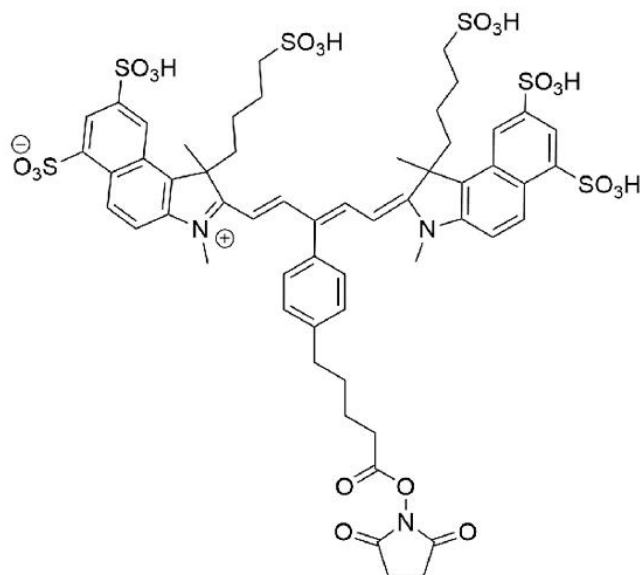


# IR 680LT NHS ESTER

SKU: FP-1526



## Description

633/647



Laser  
line

Cy5.5



Common  
filter set

673



Excitation  
max

694



Emission  
max

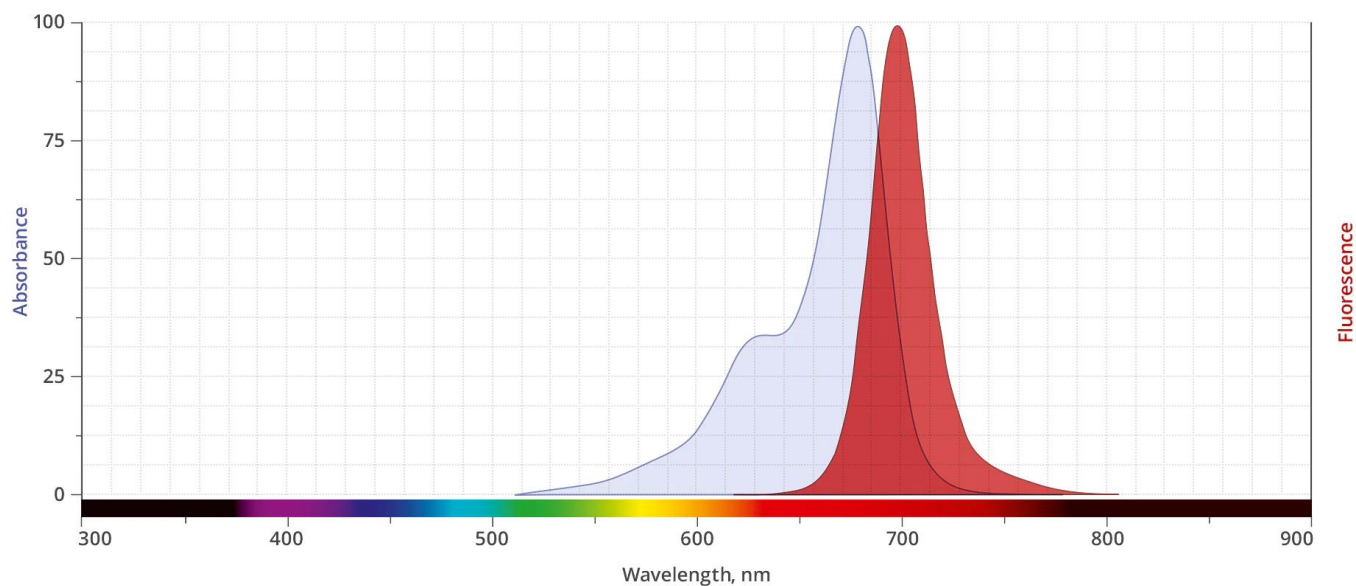
IR 680LT ([IRDye® 680LT](#) equivalent) is a bright, water-soluble dye that is structurally very similar to the commonly used Cy®5.5 Dye. The water solubility, brightness, and self-quenching characteristics of this dye were significantly improved by the introduction of two additional sulfonate groups. Far-red fluorescent IR 680 conjugates are spectrally similar to other 680 nm dyes that are used for flow cytometry, microscopy and other applications. Proteins can be labeled with IR 680 at high molar ratios without significant self-quenching, leading to brighter conjugates and

**For research use only. Not intended for animal or human therapeutic or diagnostic use.**

more sensitive detection.

The NHS ester (succinimidyl ester) is the most popular tool for conjugating this dye to a protein or antibody. NHS esters can be used to label to the primary amines of proteins (Lys), amine-modified oligonucleotides, and other amine-containing molecules.

## Abs/Em Spectra



## Specifications

<b>Unit Size</b>	1 mg, 5 mg, 25 mg, 100 mg
<b>Reactivity</b>	Primary amine
<b>Abs/Em Maxima</b>	675/694 nm
<b>Extinction coefficient</b>	190,000 cm <sup>-1</sup> M <sup>-1</sup>
<b>Solubility</b>	Water, DMSO, DMF
<b>Spectrally similar dyes</b>	Alexa Fluor® 680, DyLight® 680, IRDye® 680
<b>Molecular weight</b>	1320.46
<b>Storage Conditions</b>	-20°C.
<b>Shipping Conditions</b>	Ambient temperature

**For research use only. Not intended for animal or human therapeutic or diagnostic use.**

**For research use only. Not intended for animal or human therapeutic or diagnostic use.**