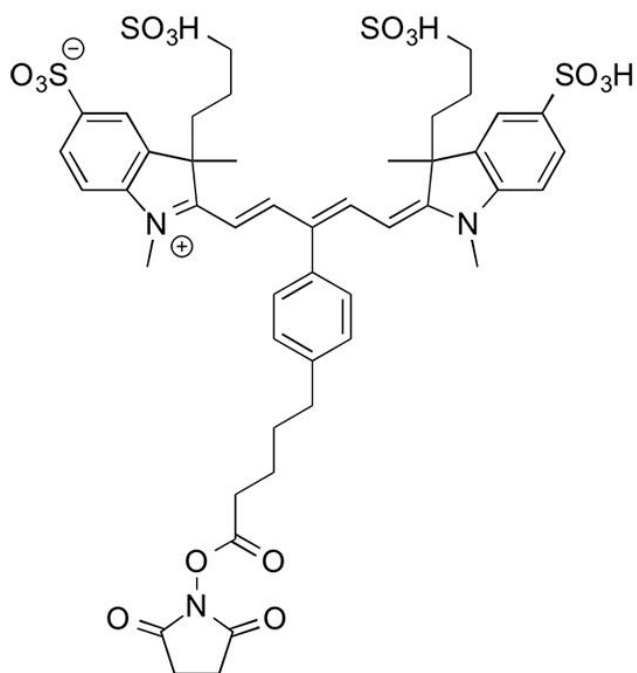


# IR 650 NHS ESTER

SKU: FP-1501



## Description

**633/647**



Laser  
line

**Cy5**



Common  
filter set

**650**



Excitation  
max

**665**



Emission  
max

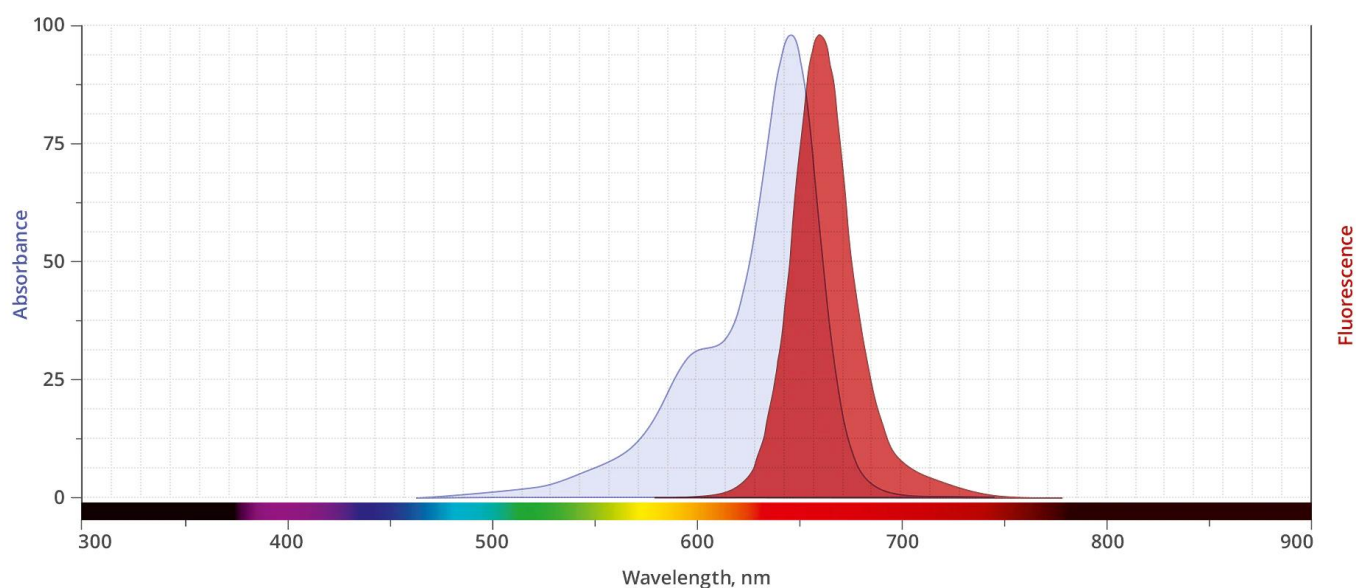
IR 650 NHS Ester (IRDye® 650 NHS Ester analog) is a water-soluble, bright, far-red-fluorescent dye and is spectrally similar to other 650 dyes that are used for flow cytometry, microscopy and other applications. IR 650 conjugates ideally suited for the 633 nm or 647 nm laser lines. A

**For research use only. Not intended for animal or human therapeutic or diagnostic use.**

significant advantage to using long wavelength dyes such as [Cy5® Dye](#) or [Alexa Fluor® 647](#) dye over other fluorophores is the low [autofluorescence](#) of biological specimens in this region of the spectrum.

The NHS ester (or succinimidyl ester) is the most popular amine reactive group for labeling with the primary amines of proteins (Lys), amine-modified oligonucleotides, and other amine-containing molecules. Proteins can be labeled with IR 650 NHS Ester at high molar ratios without significant self-quenching, leading to brighter conjugates and more sensitive detection. IR 650 conjugates can be used for detection of low abundance targets.

## Abs/Em Spectra



## Specifications

<b>Unit Size</b>	1 mg, 5 mg, 25 mg, 100 mg
<b>Reactivity</b>	Primary amine
<b>Abs/Em Maxima</b>	651/668 nm
<b>Extinction coefficient</b>	230,000 cm <sup>-1</sup> M <sup>-1</sup>
<b>Solubility</b>	Water, DMSO, DMF
<b>Spectrally similar dyes</b>	Cy5, Alexa Fluor® 647, DyLight® 649,
<b>Molecular weight</b>	1032.18
<b>Storage Conditions</b>	-20°C.

**For research use only. Not intended for animal or human therapeutic or diagnostic use.**

**Shipping Conditions**

Ambient temperature

---

**For research use only. Not intended for animal or human therapeutic or diagnostic use.**