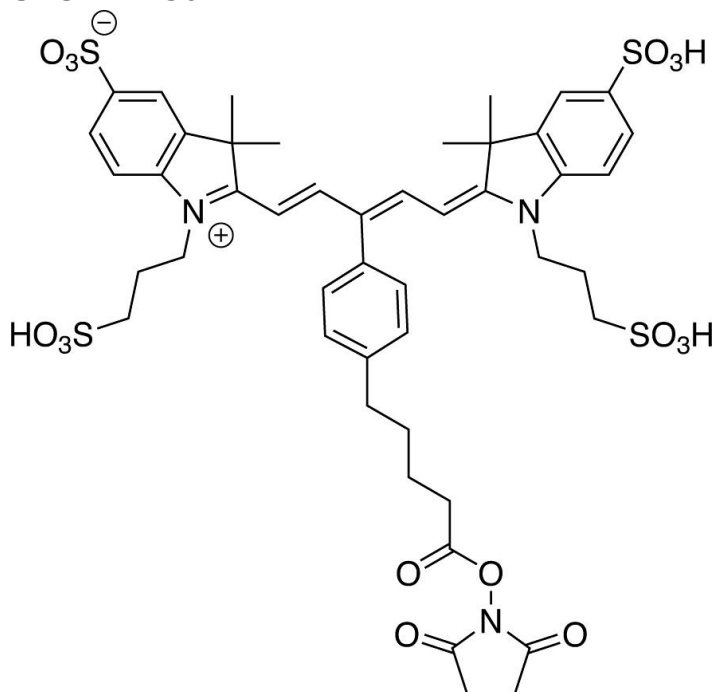




IR 650 NHS ESTER

SKU: FP-1501



DESCRIPTION

633/647



Laser
line

Cy5



Common
filter set

650



Excitation
max

665



Emission
max

IR 650 NHS Ester (IRDye® 650 NHS Ester analog) is a water-soluble, bright, far-red-fluorescent

For research use only. Not intended for therapeutic or diagnostic use in animals or humans.



dye and is spectrally similar to other 650 dyes that are used for flow cytometry, microscopy and other applications. IR 650 conjugates ideally suited for the 633 nm or 647 nm laser lines. A significant advantage to using long wavelength dyes such as Cy5® Dye or Alexa Fluor® 647 dye over other fluorophores is the low autofluorescence of biological specimens in this region of the spectrum.

The NHS ester (or succinimidyl ester) is the most popular amine reactive group for labeling with the primary amines of proteins (Lys), amine-modified oligonucleotides, and other amine-containing molecules. Proteins can be labeled with IR 650 NHS Ester at high molar ratios without significant self-quenching, leading to brighter conjugates and more sensitive detection. IR 650 conjugates can be used for detection of low abundance targets.

SPECIFICATIONS

Molecular Weight	1032.18
Molecular Formula	C ₄₆ H ₅₃ N ₃ O ₁₆ S ₄
Chemical Formula	C ₄₆ H ₅₃ N ₃ O ₁₆ S ₄
Extinction Coefficient	230,000 cm ⁻¹ M ⁻¹
Reactivity	Primary amine
Unit Size	1 mg, 5 mg, 25 mg, 100 mg
Solubility	Water, DMSO, DMF
Storage Instructions	-20°C.
Spectrally Similar Dyes	Cy5, Alexa Fluor® 647, DyLight® 649
Excitation/Emission Maximum	651/668 nm
Shipping Conditions	Ambient temperature
Shipping Instructions	Ambient temperature

ABS/EM SPECTRA

For research use only. Not intended for therapeutic or diagnostic use in animals or humans.

