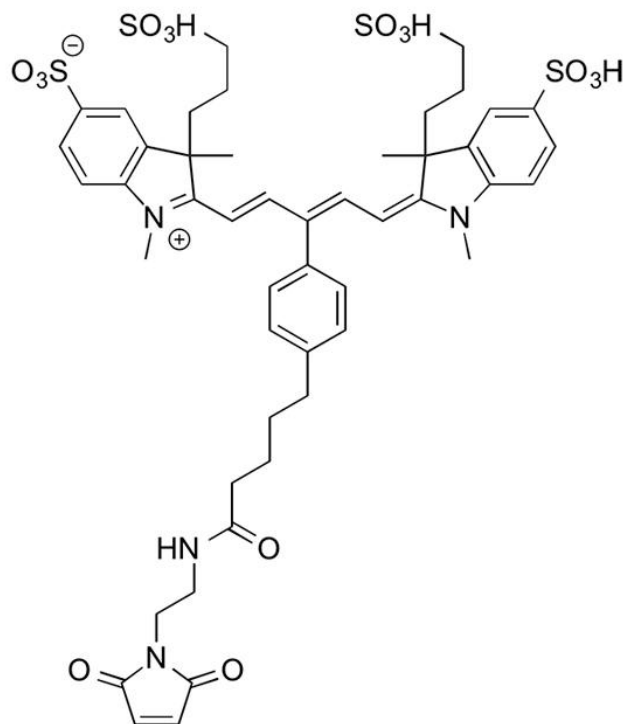


## IR 650 MALEIMIDE

SKU: FP-1502



### Description

633/647



Laser  
line

Cy5



Common  
filter set

650



Excitation  
max

665



Emission  
max

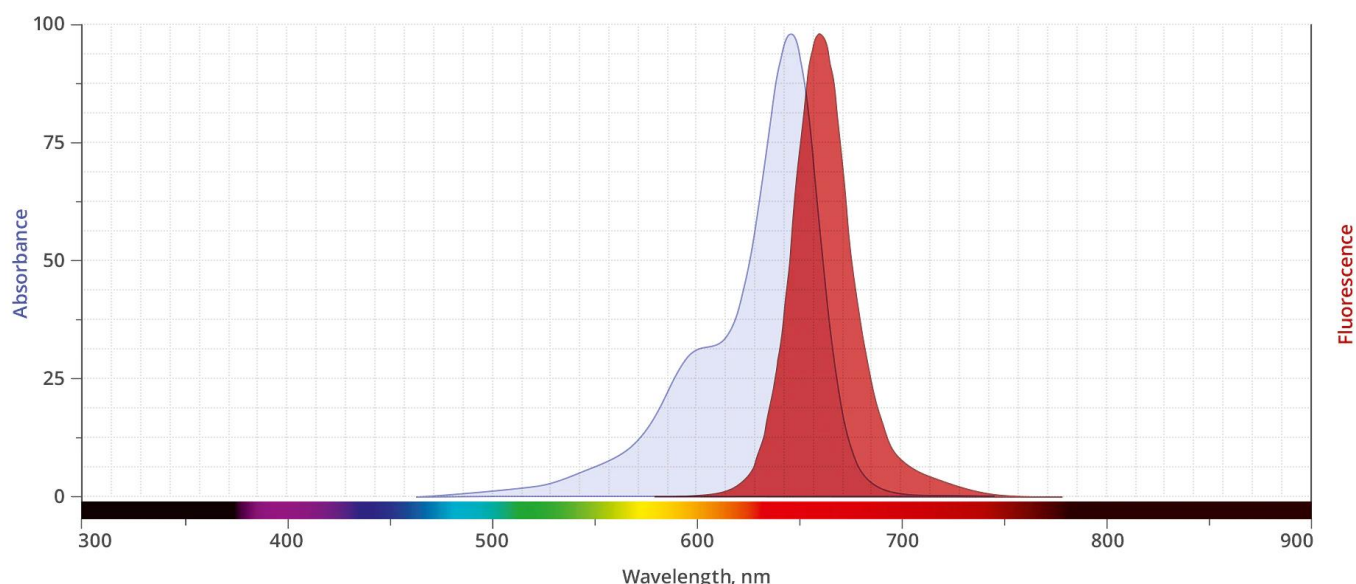
IR 650 Maleimide (IRDye® 650 Maleimide analog) is a water-soluble, bright, far-red-fluorescent

**For research use only. Not intended for animal or human therapeutic or diagnostic use.**

dye and is spectrally similar to other 650 dyes that are used for flow cytometry, microscopy and other applications. IR 650 conjugates ideally suited for the 633 nm or 647 nm laser lines. A significant advantage to using long wavelength dyes such as Cy5® Dye or Alexa Fluor® 647 dye over other fluorophores is the low autofluorescence of biological specimens in this region of the spectrum.

**Maleimide** is the most popular sulfhydryl-reactive reactive group for conjugating the dye to a thiol group on a protein, oligonucleotide thiophosphate, or low molecular weight ligand. The maleimide group specifically and efficiently reacts with reduced thiols (sulfhydryl groups, -SH) at pH 6.5 to 7.5 to form stable thioether bond. The resulting conjugates exhibit brighter fluorescence and greater photostability than the conjugates of many other spectrally similar fluorophores.

## Abs/Em Spectra



## Specifications

<b>Unit Size</b>	1 mg, 5 mg, 25 mg, 100 mg
<b>Reactivity</b>	Thiol (Cys)
<b>Abs/Em Maxima</b>	651/668 nm
<b>Extinction coefficient</b>	230,000 cm <sup>-1</sup> M <sup>-1</sup>
<b>Solubility</b>	Water, DMSO, DMF
<b>Spectrally similar dyes</b>	Cy5, Alexa Fluor® 647, DyLight® 649,

**For research use only. Not intended for animal or human therapeutic or diagnostic use.**

<b>Molecular weight</b>	1057.23
<b>Storage Conditions</b>	-20°C.
<b>Shipping Conditions</b>	Ambient temperature

---

**For research use only. Not intended for animal or human therapeutic or diagnostic use.**