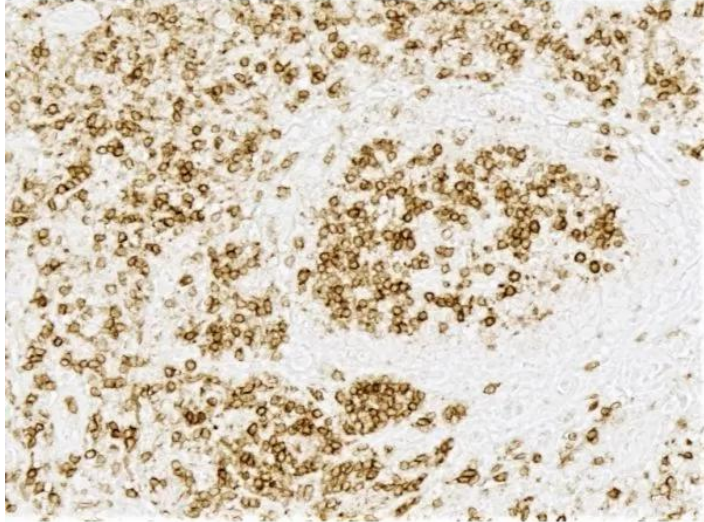




## **IMPRESS HRP HORSE ANTI-RABBIT IGG PLUS POLYMER KIT, PEROXIDASE**

**SKU:** MP-7801-15



---

### **DESCRIPTION**

The ImmPRESS polymerized reporter enzyme staining system uses novel conjugation and micropolymer chemistries to create a highly sensitive, ready-to-use, one-step detection system. This unique micropolymer of highly active enzyme (peroxidase or alkaline phosphatase) is attached to our affinity purified secondary antibodies, producing reagents with outstanding sensitivity and low background. The inclusion of BLOXALL<sup>®</sup> endogenous enzyme quenching solution and ImmPACT<sup>®</sup> DAB EqV substrate in the PLUS kit provides a more complete detection system.

#### **Features:**

- Enhanced accessibility to nuclear and membrane antigens
- Ready-to-use in a convenient dropper bottle
- Shorter assay time

**For research use only. Not intended for therapeutic or diagnostic use in animals or humans.**



- Simplified multiple labelingThe ImmPRESS (15 ml) Kit will stain approximately 75-150 sections.

## SPECIFICATIONS

|                             |   |
|-----------------------------|---|
| <b>Detection Enzyme</b>     | Peroxidase  |
| <b>Format</b>               | Ready-to-Use  |
| <b>Isolation Technology</b> | Micropolymer Reagents   |
| <b>Unit Size</b>            | 1 Kit   |
| <b>Applications</b>         | Immunohistochemistry / Immunocytochemistry, In situ hybridization, ELISAs |
| <b>Target Species</b>       | Rabbit  |
| <b>Conjugate</b>            | Micropolymer HRP  |
| <b>Platform</b>             | Micropolymer Reagents   |

## KIT COMPONENTS

- 15 ml ImmPRESS (Peroxidase) Polymer Anti-Rabbit IgG Reagent (made in horse, ready-to-use)
- 15 ml 2.5% Normal Horse Serum for blocking (ready-to-use)
- 15 ml BLOXALL Endogenous Enzyme Blocking Solution
- ImmPACT DAB EqV Substrate (7.5 ml Reagent 1 + 7.5 ml Reagent 2)

## TECHNICAL INFORMATION

The peroxidase micropolymers of the ImmPRESS HRP polymer reagent limit steric interference and provide enhanced accessibility to the target, avoiding the disadvantages of other polymer systems that use large dextrans or other macromolecules as backbones. The result is crisp, strong staining of antibody targets, especially nuclear and membrane antigens (such as Ki67, estrogen receptor, bcl-2, CD3, CD8 and CD10) and greater sensitivity than other polymer systems.

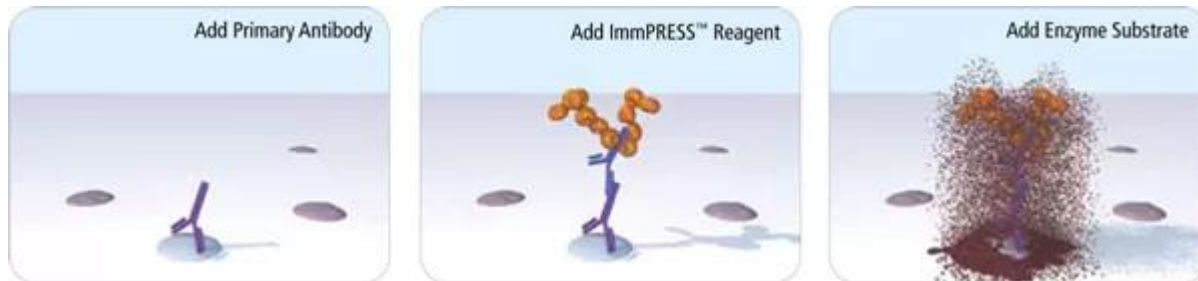
### Staining Procedure

The staining procedure is simple as shown in the diagram below. Following a blocking step with the diluted normal horse serum, sections are incubated with primary antibody. After a brief

**For research use only. Not intended for therapeutic or diagnostic use in animals or humans.**



wash, the appropriate ImmPRESS Reagent is added to the sections and incubated for 30 minutes. Sections are again rinsed and the slides are developed with the peroxidase substrate of choice.



## Consider Species Cross-Reactivity

When choosing the optimal detection system for your application, it is important to consider not only the species of the primary antibody but also the species of the tissue. If the species of the primary antibody and the species of the tissue are closely related (e.g. rat and mouse), the secondary antibody may bind to endogenous IgG in the tissue section leading to background. The following options minimize background staining in these instances:

- Use a secondary antibody specifically adsorbed to remove cross-reacting antibodies of closely-related species (e.g. ImmPRESS Anti-Mouse IgG, Rat Adsorbed).
- Use the M.O.M.® ImmPRESS Kit (Cat. No. MP-2400) for applications of mouse primary antibodies on mouse tissue.

Product review on [Biocompare.com](http://Biocompare.com).

## DOCUMENTS

- [Safety Data Sheet](#)
- [User Guide](#)
- [ImmPRESS Polymer & Automated Staining App. Note](#)
- [ImmPRESS Troubleshooting Guide](#)
- [Download CoA](#)
- [Datasheet](#)

**For research use only. Not intended for therapeutic or diagnostic use in animals or humans.**

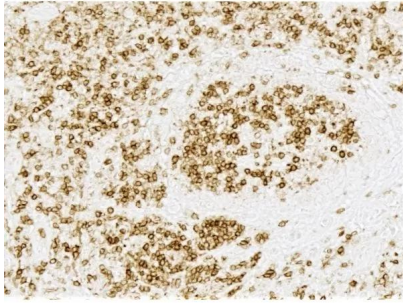


[www.vectorlabs.com](http://www.vectorlabs.com)

Email: [customerservice@vectorlabs.com](mailto:customerservice@vectorlabs.com)

Telephone: [\(650\) 697-3600](tel:(650)697-3600)

## GALLERY IMAGES



**For research use only. Not intended for therapeutic or diagnostic use in animals or humans.**