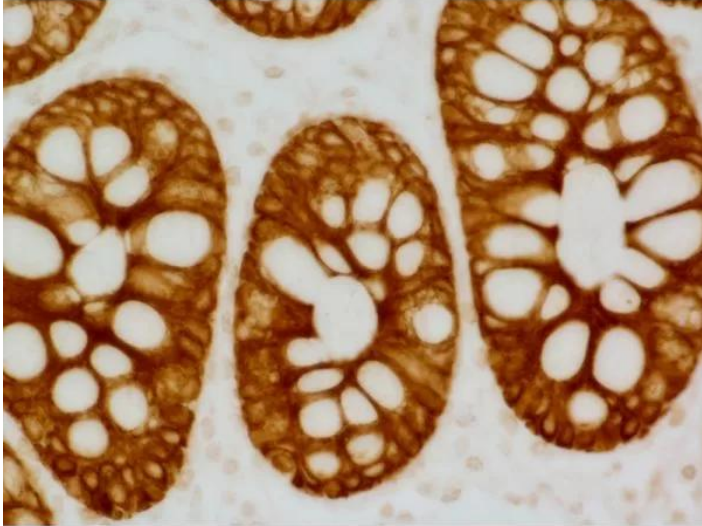




IMPRESS HRP GOAT ANTI-MOUSE IGG POLYMER DETECTION KIT, PEROXIDASE

SKU: MP-7452



DESCRIPTION

Features:

- High sensitivity
- Low background
- Micropolymer technology
- Enhanced accessibility to nuclear and membrane antigens
- One-step detection
- Ready-to-use in a convenient dropper bottle
- Shorter assay time
- Simplified multiple labeling

Kit Contents:

- ImmPRESS (Peroxidase) Polymer Anti-Mouse IgG Reagent (made in goat, ready-to-use)

For research use only. Not intended for therapeutic or diagnostic use in animals or humans.



- 2.5% Normal Goat Serum for blocking (ready-to-use)The ImmPRESS (15 ml) Kit will stain approximately 75-150 sections and the ImmPRESS (50 ml) Kit will stain approximately 250-500 sections.

SPECIFICATIONS

Detection Enzyme	Peroxidase
Format	Ready-to-Use
Isolation Technology	Micropolymer Reagents
Unit Size	15 ml, 50 ml
Applications	ELISAs, Immunohistochemistry / Immunocytochemistry, In situ hybridization
Target Species	Mouse
Conjugate	Micropolymer HRP
Platform	Micropolymer Reagents
Source Species	Mouse

TECHNICAL INFORMATION

The ImmPRESS polymerized reporter enzyme staining system uses novel conjugation and micropolymer chemistries to create a highly sensitive, ready-to-use, one-step detection system. This unique micropolymer of highly active enzyme (peroxidase or alkaline phosphatase) is attached to our affinity purified secondary antibodies, producing reagents with outstanding sensitivity and low background.

The peroxidase micropolymers of the ImmPRESS HRP polymer reagent limit steric interference and provide enhanced accessibility to the target, avoiding the disadvantages of other polymer systems that use large dextrans or other macromolecules as backbones. The result is crisp, strong staining of antibody targets, especially nuclear and membrane antigens (such as Ki67, estrogen receptor, bcl-2, CD3, CD8 and CD10) and greater sensitivity than other polymer systems.

Key advantages of the ImmPRESS Polymer System:

- High sensitivity
- Low background

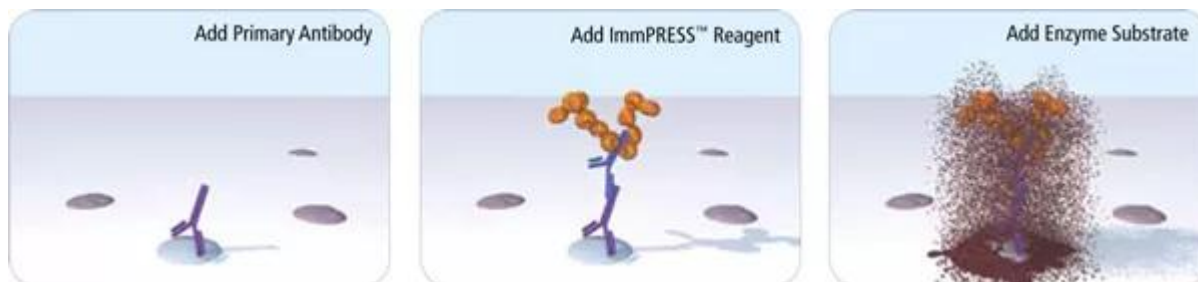
For research use only. Not intended for therapeutic or diagnostic use in animals or humans.



- Micropolymer technology
- Enhanced accessibility to nuclear and membrane antigens
- One-step detection
- Ready-to-use in a convenient dropper bottle
- Shorter assay time
- Simplified multiple labeling

Staining Procedure

The staining procedure is simple as shown in the diagram below. Following a blocking step with the diluted normal horse serum, sections are incubated with primary antibody. After a brief wash, the appropriate ImmPRESS Reagent is added to the sections and incubated for 30 minutes. Sections are again rinsed and the slides are developed with the peroxidase substrate of choice.



Consider Species Cross-Reactivity

When choosing the optimal detection system for your application, it is important to consider not only the species of the primary antibody but also the species of the tissue. If the species of the primary antibody and the species of the tissue are closely related (e.g. rat and mouse), the secondary antibody may bind to endogenous IgG in the tissue section leading to background. The following options minimize background staining in these instances:

- Use a secondary antibody specifically adsorbed to remove cross-reacting antibodies of closely-related species (e.g. ImmPRESS Anti-Mouse IgG, Rat Adsorbed).
- Use the M.O.M.[®] ImmPRESS Kit (Cat. No. MP-2400) for applications of mouse primary antibodies on mouse tissue.

Product review on Biocompare.com.

For research use only. Not intended for therapeutic or diagnostic use in animals or humans.



CITATIONS

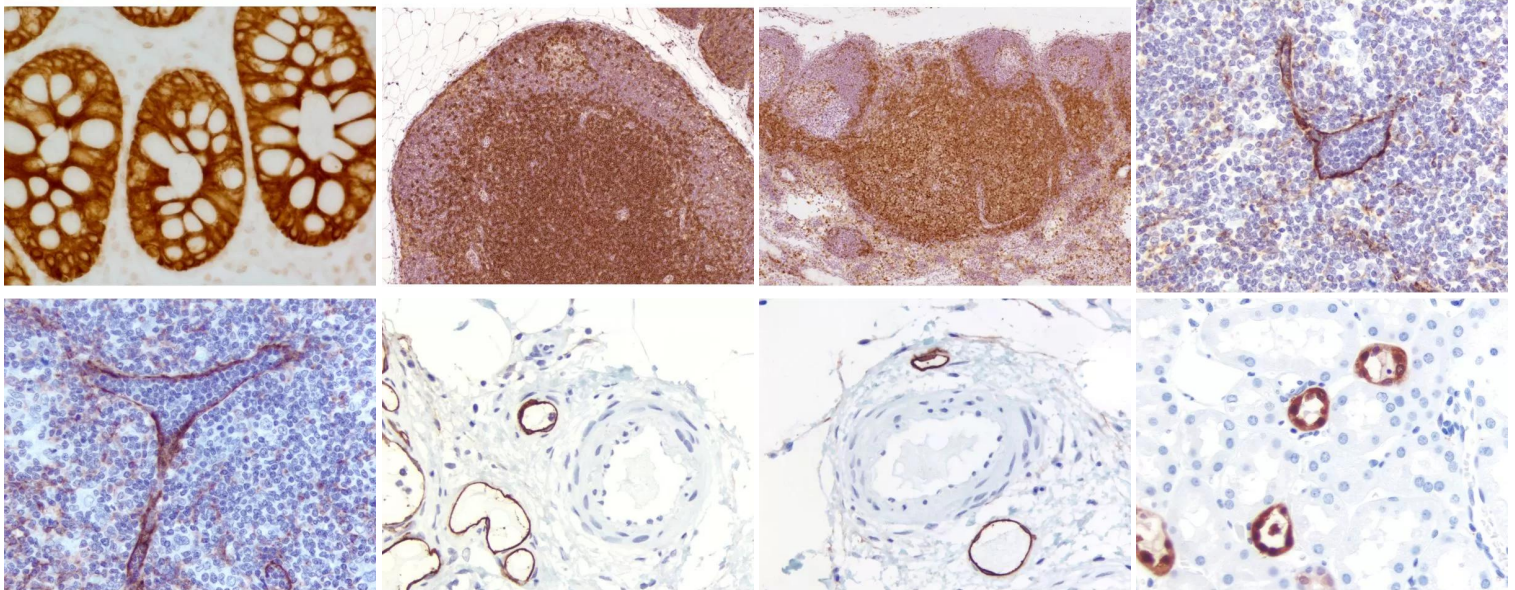


Powered by Bioz © 2023 See more details on Bioz

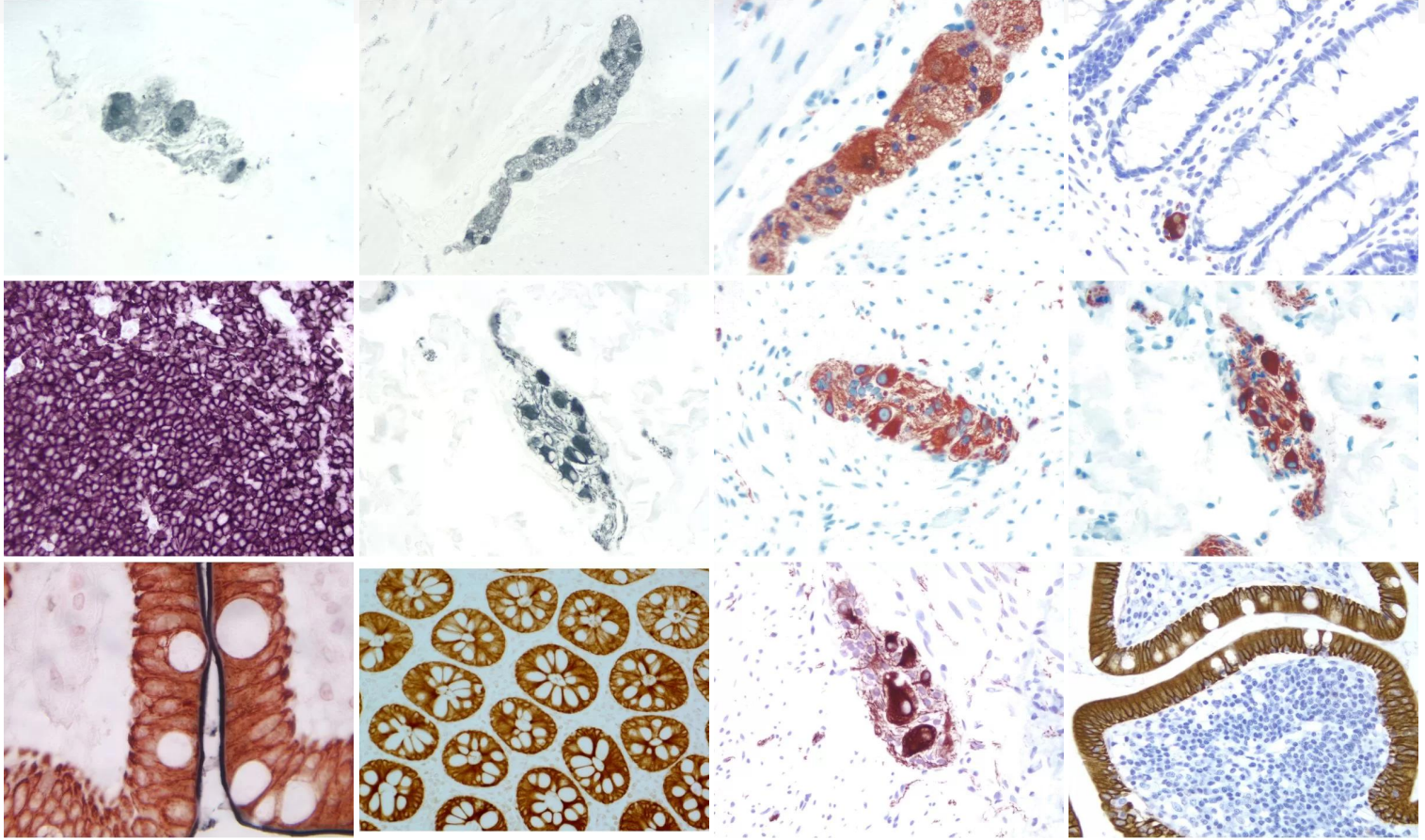
DOCUMENTS

- [ImmPRESS Polymer & Automated Staining App. Note](#)
- [ImmPRESS Troubleshooting Guide](#)
- [User Guide](#)
- [Safety Data Sheet](#)
- [Download CoA](#)
- [Datasheet](#)

GALLERY IMAGES



For research use only. Not intended for therapeutic or diagnostic use in animals or humans.



For research use only. Not intended for therapeutic or diagnostic use in animals or humans.