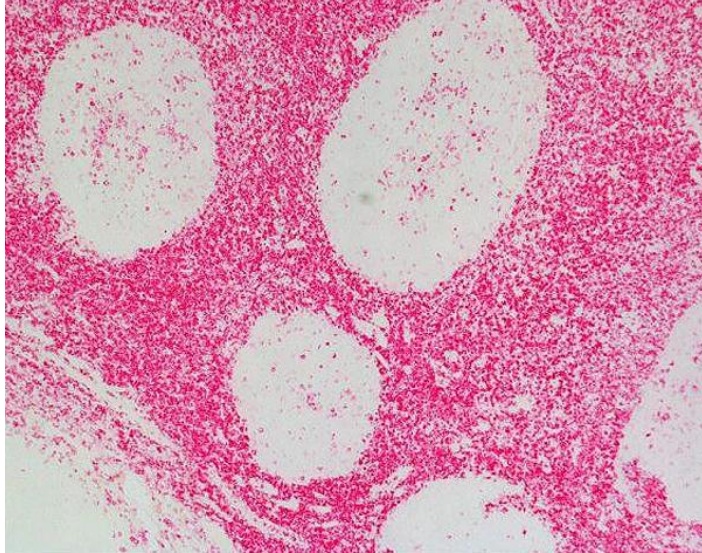




IMPRESS-AP GOAT ANTI-RAT IGG (MOUSE ADSORBED) POLYMER DETECTION KIT, ALKALINE PHOSPHATASE

SKU: MP-5444-15



DESCRIPTION

The ImmPRESS polymerized reporter enzyme staining system uses novel conjugation and micropolymer chemistries to create a highly sensitive, ready-to-use, one-step detection system. This unique micropolymer of highly active enzyme is attached to our affinity purified secondary antibodies, producing reagents with outstanding sensitivity and low background. This secondary antibody can be used to stain mouse tissue because it is specifically adsorbed to remove cross-reacting antibodies of closely-related species.

Features:

- Non-biotin
- Enhanced accessibility to nuclear and membrane antigens
- Ready-to-use in a convenient dropper bottle
- Shorter assay time

For research use only. Not intended for therapeutic or diagnostic use in animals or humans.



- Simplified multiple labelingThe ImmPRESS (15 ml) Kit will stain approximately 75-150 sections.

SPECIFICATIONS

Detection Enzyme	Alkaline Phosphatase
Format	Ready-to-Use
Isolation Technology	Micropolymer Reagents
Unit Size	15 ml
Applications	Immunohistochemistry / Immunocytochemistry, In situ hybridization, ELISAs
Target Species	Rat
Conjugate	Micropolymer AP
Platform	Micropolymer Reagents

KIT COMPONENTS

- 15 ml ImmPRESS-AP (alkaline phosphatase) Polymer Anti-Rat IgG Reagent (ready-to-use)
- 15 ml 2.5% Normal Goat Serum for blocking (ready-to-use)

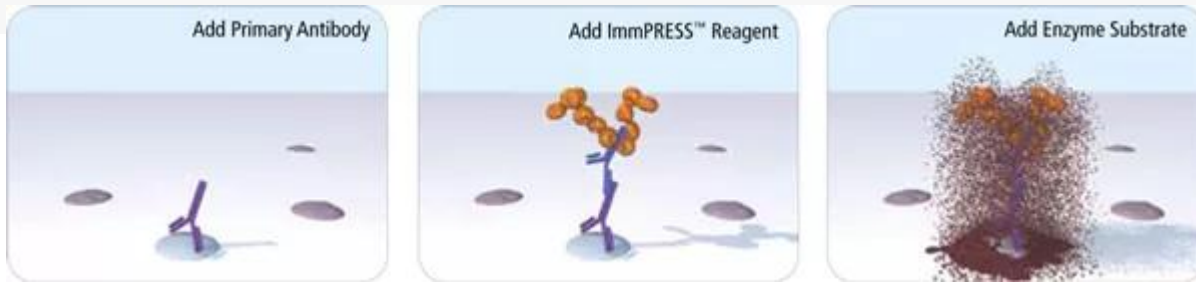
TECHNICAL INFORMATION

The ImmPRESS-AP Alkaline Phosphatase Polymer Reagent micropolymer technology limits steric interference and provides enhanced accessibility to the target avoiding the disadvantages of other polymer systems that use large dextrans or other macromolecules as backbones. The result is crisp, strong staining of antibody targets, especially nuclear and membrane antigens, and greater sensitivity than conventional alkaline phosphatase antibody conjugates and other alkaline phosphatase polymer systems for immunohistochemistry and other applications.

Immunostaining Protocol

The staining procedure is simple as shown in the diagram below. Following a blocking step with the diluted normal horse serum, sections are incubated with primary antibody. After a brief wash, the appropriate ImmPRESS Reagent is added to the sections and incubated for 30 minutes. Sections are again rinsed and the slides are developed with the peroxidase substrate of choice.

For research use only. Not intended for therapeutic or diagnostic use in animals or humans.



Consider Species Cross-Reactivity

When choosing the optimal detection system for your application, it is important to consider not only the species of the primary antibody but also the species of the tissue. If the species of the primary antibody and the species of the tissue are closely related (e.g. rat and mouse), the secondary antibody may bind to endogenous IgG in the tissue section leading to background. The following options minimize background staining in these instances:

- Use a secondary antibody specifically adsorbed to remove cross-reacting antibodies of closely-related species (e.g. ImmPRESS Anti-Mouse IgG, Rat Adsorbed).
- Use the M.O.M.[®] ImmPRESS Kit (Cat. No. MP-2400) for applications of mouse primary antibodies on mouse tissue.

DOCUMENTS

- [ImmPRESS Polymer & Automated Staining App. Note](#)
- [ImmPRESS Troubleshooting Guide](#)
- [User Guide](#)
- [Safety Data Sheet](#)
- [Download CoA](#)
- [Datasheet](#)

GALLERY IMAGES

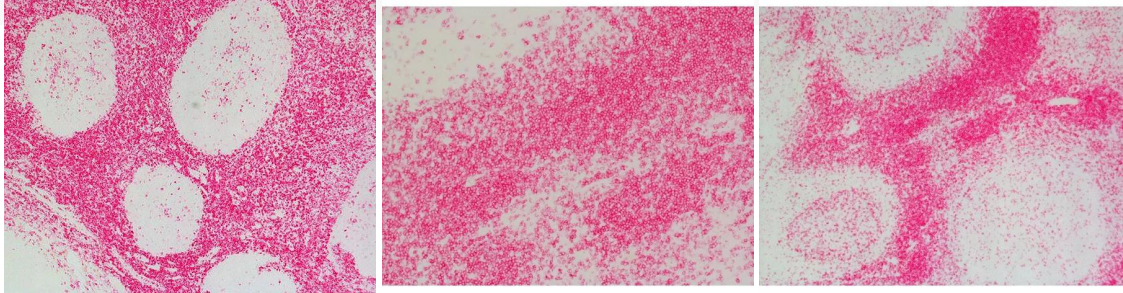
For research use only. Not intended for therapeutic or diagnostic use in animals or humans.



www.vectorlabs.com

Email: customerservice@vectorlabs.com

Telephone: [\(650\) 697-3600](tel:(650)697-3600)



For research use only. Not intended for therapeutic or diagnostic use in animals or humans.

[ImmPRESS-AP Goat Anti-Rat IgG \(Mouse Adsorbed\) Polymer Detection Kit, Alkaline Phosphatase](https://vectorlabs.com/products/immpress-ap-anti-rat-igg-mouseads-kit/)

<https://vectorlabs.com/products/immpress-ap-anti-rat-igg-mouseads-kit/>