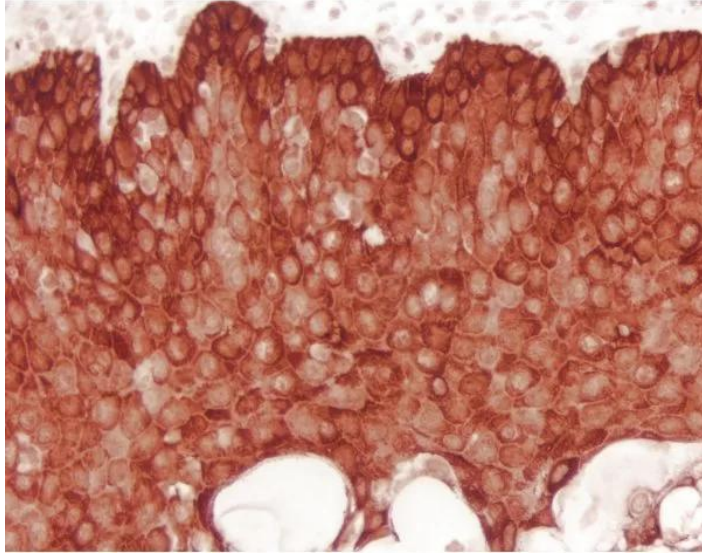




## **IMPACT® NOVARED® SUBSTRATE, PEROXIDASE (HRP)**

**SKU:** SK-4805



---

### **DESCRIPTION**

The ImmPACT® NovaRED HRP substrate produces a red reaction products. It produces 2-4 fold greater sensitivity than the original substrate kit (SK-4800).

#### **Features:**

- Optimized for IHC/ICC/ISH and blots
- Permanent mounting
- Ideal for single and multiple labeling
- Working solutions stable for up to 14 days at 4 °C
- Supplied as 120 ml of diluent and stock solutions in dropper bottles

**For research use only. Not intended for therapeutic or diagnostic use in animals or humans.**



## SPECIFICATIONS

|  |   |
|--|---|
| <b>Chromogen Color</b>                 | Red   |
| <b>Detection Enzyme</b>                | Peroxidase  |
| <b>Microscopy</b>                      | Brightfield, Darkfield, Electron, Spectral Imaging  |
| <b>Mounting Medium Type</b>            | Non-Aqueous (Permanent)   |
| <b>Unit Size</b>                       | 120 ml  |
| <b>Applications</b>                    | Immunohistochemistry / Immunocytochemistry, In situ hybridization, Blotting Applications, Elispot |
| <b>Additional Substrate Properties</b> | Contrast with Tissue Pigments, Multiple Labeling  |
| <b>Substrate Reaction Product</b>      | Precipitating Reaction Product  |

## KIT COMPONENTS

- 120 ml ImmPACT NovaRED Diluent
- 3 ml ImmPACT NovaRED Reagent 1
- 1.75 ml ImmPACT NovaRED Reagent 2
- 1.75 ml ImmPACT NovaRED Reagent 3
- 2.5 ml ImmPACT NovaRED Reagent 4

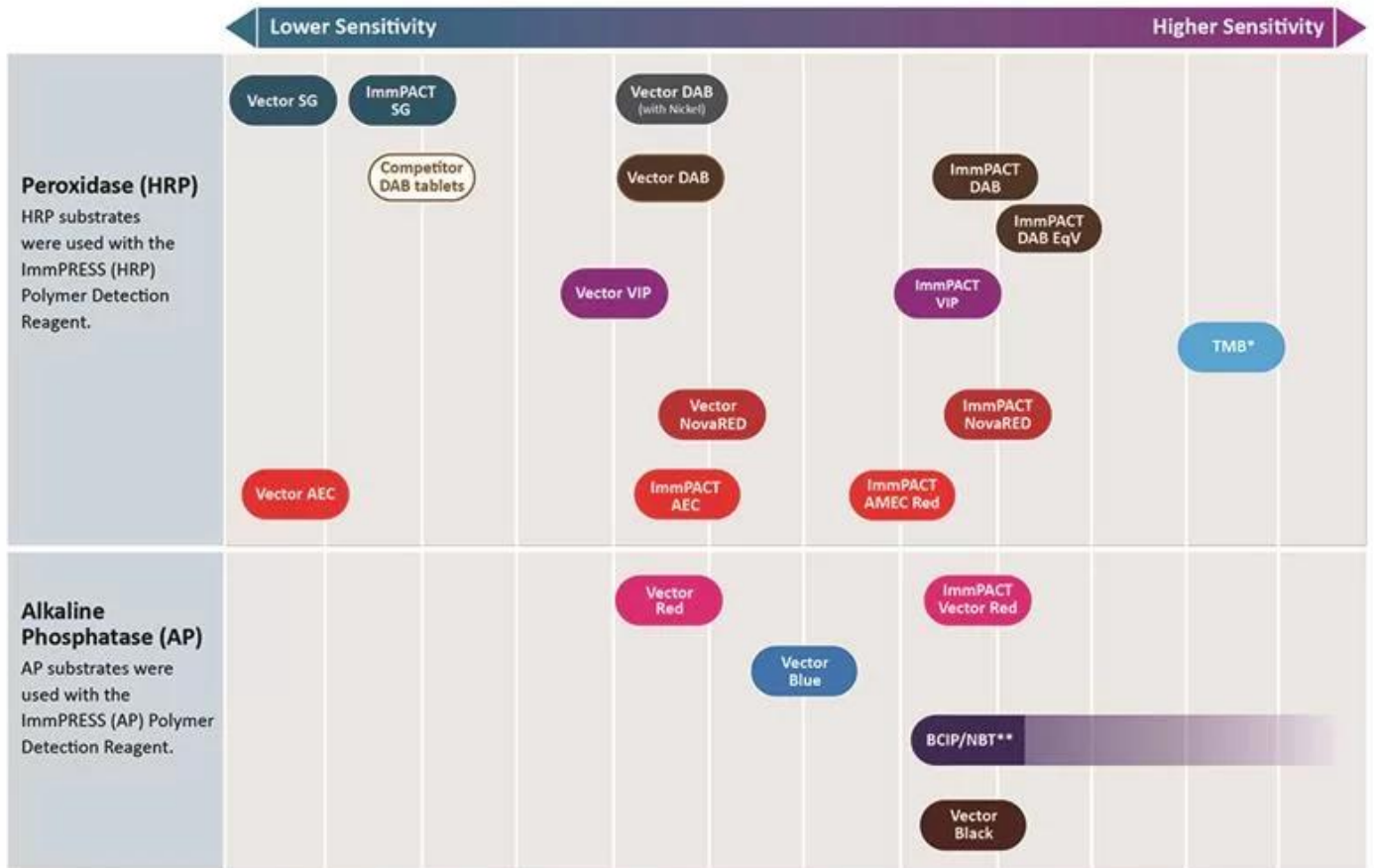
## TECHNICAL INFORMATION

Vector® NovaRED and ImmPACT NovaRED HRP substrates are useful as alternatives to DAB or as a second color for multiple antigen labeling. Vector NovaRED and ImmPACT NovaRED substrates also provide excellent color contrast in pigmented tissue such as melanoma.

**For research use only. Not intended for therapeutic or diagnostic use in animals or humans.**



### Relative Sensitivity of Substrates in Immunohistochemistry



\* Reaction product deposition not discreet or reliable for IHC. \*\* Longer incubation times increase sensitivity.

**For research use only. Not intended for therapeutic or diagnostic use in animals or humans.**



## Counterstain/Substrate Compatibility Table

This table is designed as a reference to determine the optimal counterstain/substrate combination for your application. Considerations should be given to tissue type, antigen unmasking protocol and other detection parameters to achieve the desired staining intensity.

| Substrate                    | Catalog Number | Vector Hematoxylin and Hematoxylin QS H-3401 and H-3404 | Vector Methyl Green H-3402      | Vector Nuclear Fast Red H-3403 |
|------------------------------|----------------|---|---------------------------------|--------------------------------|
| ImmPACT DAB (brown)          | SK-4105        | Excellent Contrast                                      | Excellent Contrast              | Fair Contrast                  |
| ImmPACT DAB EqV              | SK-4103        | Excellent Contrast                                      | Excellent Contrast              | Fair Contrast                  |
| DAB (brown)                  | SK-4100        | Excellent Contrast                                      | Excellent Contrast              | Fair Contrast                  |
| DAB-Ni (gray-black)          | SK-4100        | Excellent Contrast                                      | Fair Contrast *                 | Good Contrast                  |
| ImmPACT AEC (red)            | SK-4205        | Excellent Contrast                                      | Counterstain Incompatibility ** | Color Incompatibility          |
| ImmPACT AMEC Red (red)       | SK-4285        | Excellent Contrast                                      | Counterstain Incompatibility ** | Color Incompatibility          |
| AEC (red)                    | SK-4200        | Excellent Contrast                                      | Counterstain Incompatibility ** | Color Incompatibility          |
| TMB (blue)                   | SK-4400        | Color Incompatibility                                   | Counterstain Incompatibility    | Excellent Contrast             |
| ImmPACT VIP (purple)         | SK-4605        | Fair Contrast   | Excellent Contrast              | Poor Contrast                  |
| Vector VIP (purple)          | SK-4600        | Fair Contrast   | Excellent Contrast              | Poor Contrast                  |
| ImmPACT SG (blue-gray)       | SK-4705        | Poor Contrast   | Good Contrast                   | Excellent Contrast             |
| SG (blue-gray)               | SK-4700        | Poor Contrast   | Good Contrast                   | Excellent Contrast             |
| ImmPACT NovaRED (red)        | SK-4805        | Excellent Contrast                                      | Excellent Contrast ***          | Color Incompatibility          |
| Vector NovaRED (red)         | SK-4800        | Excellent Contrast                                      | Excellent Contrast ***          | Color Incompatibility          |
| ImmPACT Vector Red (magenta) | SK-5105        | Excellent Contrast                                      | Excellent Contrast              | Color Incompatibility          |
| Vector Red (magenta)         | SK-5100        | Excellent Contrast                                      | Excellent Contrast              | Color Incompatibility          |
| Vector Black (black)         | SK-5200        | Excellent Contrast                                      | Excellent Contrast *            | Excellent Contrast             |
| Vector Blue (blue)           | SK-5300        | Color Incompatibility                                   | Good Contrast                   | Excellent Contrast             |
| BCIP/NBT (indigo)            | SK-5400        | Color Incompatibility                                   | Excellent Contrast *            | Excellent Contrast             |

\* This substrate shows a slight decrease in sensitivity following the methyl green protocol. This decrease can be minimized by reducing the heat incubation and acetone rinse times in the methyl green protocol.

\*\* Substrate dissolves in acetone wash.

\*\*\* A slight color change in ImmPACT NovaRED™ and Vector NovaRED™ reaction product may be seen using methyl green.

**For research use only. Not intended for therapeutic or diagnostic use in animals or humans.**



### Enzyme Substrate Combinations

Recommended combinations of substrates and the recommended order in which they should be used.

| Second Substrate \ First Substrate |  | Alkaline Phosphatase  |                            |                           | Peroxidase  |  |                             |  |   |   |
|------------------------------------|--|---|----------------------------|---------------------------|---|--|-----------------------------|--|---|---|
|                                    |  | ImmPACT Vector Red & Vector Red (magenta) SK-5105 & SK-5100 | Vector Blue (blue) SK-5300 | BCIP/NBT (indigo) SK-5400 | ImmPACT VIP & Vector VIP (purple) SK-4605 & SK-4600 | ImmPACT DAB, ImmPACT DAB EqV & DAB (brown) SK-4105, SK-4103, SK-4100 | DAB-Ni (gray-black) SK-4100 | ImmPACT NovaRED & Vector NovaRED (red) SK-4805 & SK-4800 | ImmPACT SG & SG (blue-gray) SK-4705 & SK-4700 | ImmPACT AEC, ImmPACT AMEC Red & AEC (red) SK-4205, SK-4285, SK-4200 |
| Alkaline Phosphatase               | ImmPACT Vector Red & Vector Red (magenta) SK-5105 & SK-5100          |   | -                          | -                         | -   | +  | +                           | -  | +   | -   |
|                                    | Vector Blue (blue) SK-5300   | +   |                            | -                         | +   | +  | +                           | +  | +   | +   |
|                                    | BCIP/NBT (indigo) SK-5400  | +   | -                          |                           | +   | +  | +                           | +  | +   | +   |
| Peroxidase                         | ImmPACT VIP & Vector VIP (purple) SK-4605, SK-4600                   | -   | +                          | -                         |   | +  | +                           | -  | +   | -   |
|                                    | ImmPACT DAB, ImmPACT DAB EqV & DAB (brown) SK-4105, SK-4103, SK-4100 | +   | +                          | +                         | +   |  | -                           | -  | +   | +   |
|                                    | DAB-Ni (gray-black) SK-4100  | +   | -                          | -                         | +   | +  |                             | +  | -   | -   |
|                                    | ImmPACT NovaRED & Vector NovaRED (red) SK-4805, SK-4800              | -   | +                          | +                         | -   | +  | +                           |  | +   | -   |
|                                    | ImmPACT SG & SG (blue-gray) SK-4705, SK-4700                         | +   | -                          | -                         | +   | +  | -                           | -  |   | +   |
|                                    | ImmPACT AEC, ImmPACT AMEC Red & AEC (red) SK-4205, SK-4285, SK-4200  | -   | -                          | -                         | -   | +  | -                           | -  | +   |   |

+ Indicates good contrast      - Indicates incompatibility of substrates for various reasons

## CITATIONS



Powered by Bioz © 2023 See more details on Bioz

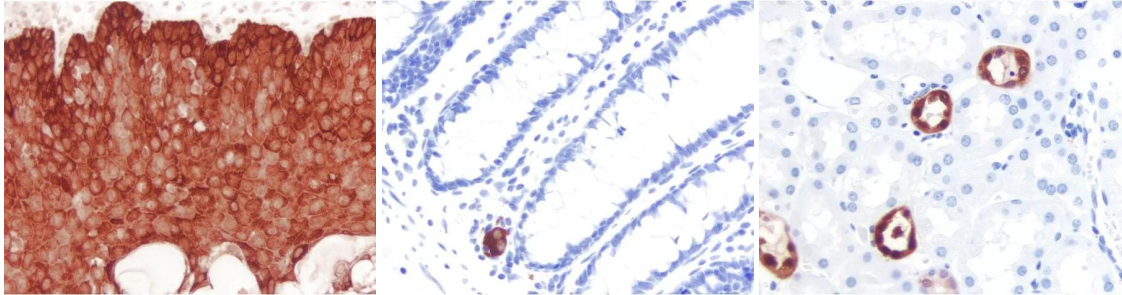
For research use only. Not intended for therapeutic or diagnostic use in animals or humans.



## DOCUMENTS

- [Safety Data Sheet](#)
- [Enzyme Substrates Brochure](#)
- [Enzyme Substrate Combinations Chart](#)
- [Counterstain/Substrate Compatibility Chart](#)
- [User Guide](#)
- [Download CoA](#)
- [Datasheet](#)

## GALLERY IMAGES



**For research use only. Not intended for therapeutic or diagnostic use in animals or humans.**