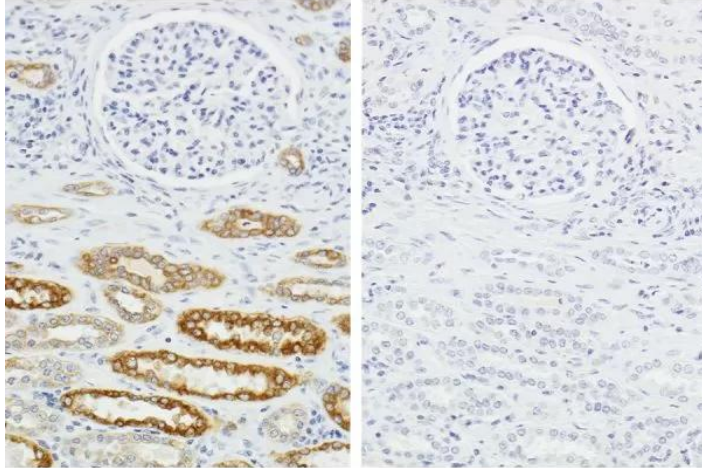


# H.O.H.™ (HUMAN ON HUMAN) IMMUNODETECTION KIT

**SKU:** HOH-3000



## Description

The H.O.H. Immunodetection Kit is intended to detect human (or humanized) antibodies on frozen or paraffin embedded human tissue sections.

## Key advantages of the H.O.H. Immunodetection Kit:

- Clear, crisp, specific staining of antigens of interest
- Procedures are simple and easy to follow
- No tedious calculations are required

The H.O.H. Immunodetection Kit contains enough stock reagents to produce about 5 ml of working solution, which is generally sufficient to stain approximately 50 - 100 tissue sections.

## Specifications

<b>Unit Size</b>	1 kit
------------------	-------

**For research use only. Not intended for animal or human therapeutic or diagnostic use.**

<b>Applications</b>	Immunohistochemistry / Immunocytochemistry, Blotting Applications
<b>Technology</b>	Human on Human (H.O.H.) Systems
<b>Detection Enzyme(s)</b>	Peroxidase
<b>Target Species</b>	Human
<b>Format</b>	Concentrate
<b>Blocking Action</b>	Endogenous Human Ig

---

## GALLERY IMAGES



**For research use only. Not intended for animal or human therapeutic or diagnostic use.**