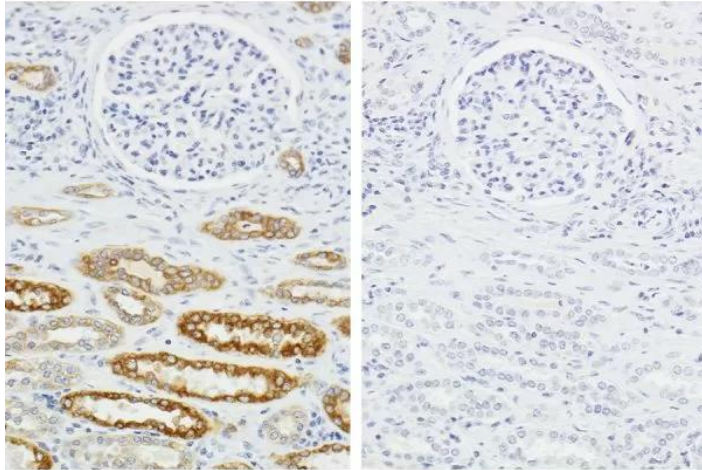




H.O.H. (HUMAN ON HUMAN) IMMUNODETECTION KIT

SKU: HOH-3000



DESCRIPTION

The H.O.H. Immunodetection Kit is intended to detect human (or humanized) antibodies on frozen or paraffin embedded human tissue sections.

Key advantages of the H.O.H. Immunodetection Kit:

- Clear, crisp, specific staining of antigens of interest
- Procedures are simple and easy to follow
- No tedious calculations are required

The H.O.H. Immunodetection Kit contains enough stock reagents to produce about 5 ml of working solution, which is generally sufficient to stain approximately 50 - 100 tissue sections.

For research use only. Not intended for therapeutic or diagnostic use in animals or humans.



SPECIFICATIONS

Blocking Action	Endogenous Human Ig
Detection Enzyme	Peroxidase
Format	Concentrate
Isolation Technology	Human on Human (H.O.H.) Systems
Unit Size	1 Kit
Applications	Immunohistochemistry / Immunocytochemistry, Blotting Applications
Target Species	Human
Source Species	Human

KIT COMPONENTS

What's in the box:

- 5 ml Protein Block
- 2.5 ml Solution A
- 2.5 ml Solution B
- 300 µl HRP Anti-Goat IgG
- 5 ml HRP Antibody Diluent
- 2.5 ml ImmPACT DAB EqV Reagent 1 (Chromogen)
- 2.5 ml ImmPACT DAB EqV Reagent 2 (Diluent)

TECHNICAL INFORMATION

The H.O.H. Immunodetection Kit is intended to detect human (or humanized) antibodies on frozen or paraffin embedded human tissue sections.

The inability of a secondary antibody to distinguish between a primary antibody produced in humans and the endogenous human immunoglobulins present in human tissue results in high background staining, which obscures specific staining. This problem can be eliminated by using our Human on Human Kit and the result is clear, crisp, specific staining of the antigens of interest.

For research use only. Not intended for therapeutic or diagnostic use in animals or humans.



This kit employs a straightforward two-step primary antibody preparation followed by standard IHC assay detection procedures. Once the human primary antibody solution has been prepared, assay time is approximately 90 minutes.

This comprehensive kit includes all required volume-matched reagents including [ImmPACT DAB EqV peroxidase substrate](#). The procedures for use are easy to follow and omit the necessity of tedious and often confusing calculations. The H.O.H. Immunodetection Kit can be applied to most cell and tissue based staining situations where the detection of endogenous human IgG would be problematic when using a human, humanized, or chimeric human primary antibody. This kit is effective in eliminating confounding interference from endogenous human IgG on highly antigenic frozen or paraffin embedded tissue sections.



[Download our HOH-3000 Whitepaper:](#)

Optimized Human on Human Immunodetection

DOCUMENTS

- [Safety Data Sheet](#)
- [User Guide](#)
- [Download CoA](#)
- [Datasheet](#)
- [White Paper](#)

GALLERY IMAGES

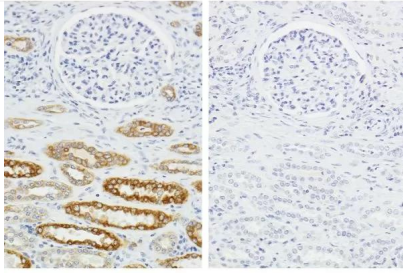
For research use only. Not intended for therapeutic or diagnostic use in animals or humans.



www.vectorlabs.com

Email: customerservice@vectorlabs.com

Telephone: [\(650\) 697-3600](tel:(650)697-3600)



For research use only. Not intended for therapeutic or diagnostic use in animals or humans.

[H.O.H. \(Human on Human\) Immunodetection Kit](https://vectorlabs.com/products/human-on-human-immunodetection-kit/)

<https://vectorlabs.com/products/human-on-human-immunodetection-kit/>