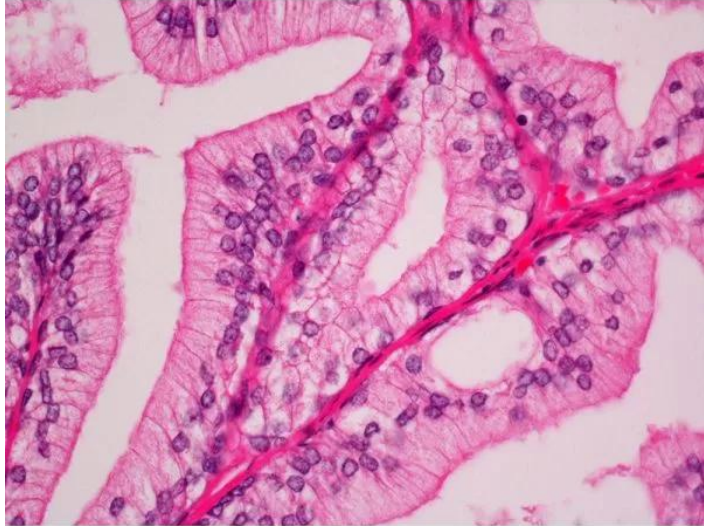




HEMATOXYLIN & EOSIN STAIN KIT

SKU: H-3502



DESCRIPTION

The Hematoxylin and Eosin Stain Kit is intended for use in histology and cytology applications. Included in this kit is a modified Eosin that provides the benefits of a traditional alcoholic formulation with significant improvements in usability. Advantages include lower evaporation rate, better color patterns, and improved surface tension to remain on tissue section. Our Hematoxylin produces crisp, intense blue nuclei providing optimal contrast to the Eosin stained cytoplasm.

SPECIFICATIONS

Format	Ready-to-Use
Microscopy	Brightfield
Unit Size	1 Kit
Applications	Histology

For research use only. Not intended for therapeutic or diagnostic use in animals or humans.



Cellular Stain

Nucleus, Cytoplasm

TECHNICAL INFORMATION

Colors:

- Cytoplasm: Light Pink
- Erythrocytes: Pink/Red
- Collagen: Pink
- Nuclei: Blue
- Muscle: Pink/Rose

Control Tissues: Small intestine, Appendix, Colon, Prostate

Components:

- Hematoxylin, Mayer's (Modified), 30 ml
- Bluing Reagent, 30 ml
- Eosin Y Solution (Modified), 30 ml

Notes:

- Intensity should be optimized for each tissue type, fixative used, and presentation (frozen or paraffin-embedded)
- Use standard laboratory precautions to avoid contact with skin and eyes.
- Harmful if swallowed. Do not take internally.
- These reagents are for research use only.
- Follow all federal, state and local regulations for disposal.

CITATIONS



Powered by Bioz © 2023 See more details on Bioz

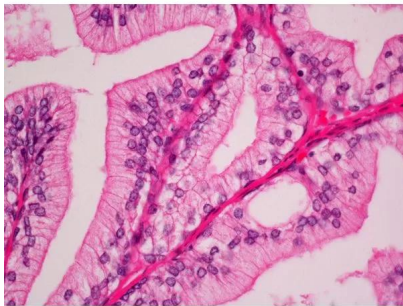
For research use only. Not intended for therapeutic or diagnostic use in animals or humans.



DOCUMENTS

- [User Guide](#)
- [Safety Data Sheet](#)
- [Download CoA](#)
- [Datasheet](#)

GALLERY IMAGES



For research use only. Not intended for therapeutic or diagnostic use in animals or humans.