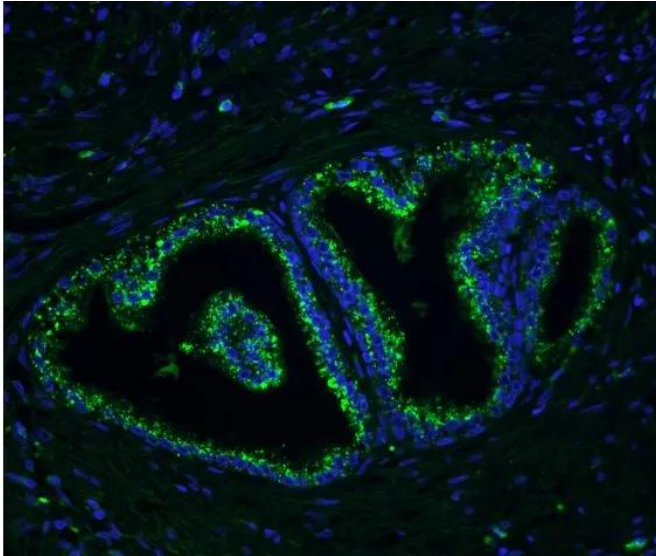




## **GLYSITE™ SCOUT GLYCAN SCREENING KIT**

**SKU:** GSK-3000



---

### **DESCRIPTION**

Glysite Scout Glycan Screening Kit, Immunofluorescence 488 is a fully integrated kit for the detection of glycan expression in tissue sections. Included in the kit is a diverse panel of glycan binders (lectins) ideal for the preliminary screening of tissue samples with unknown glycosylation changes with specificity to mannose, complex *N*-glycan, core *O*-glycan, fucose, sialic acid, sulfation, GlcNAc, chitin, galactose, and LacNAc.

Validated on human and mouse tissue—including FFPE tissue, across a range of tissue types including colon, lung, spleen, kidney, liver, pancreas, testes, heart, bladder, and uterus—this versatile kit is flexible to meet your needs. Glysite Scout Glycan Screening Kits, Immunofluorescence are available with 3 fluorophore options, 488 (GSK-3000), 594 (GSK-2000), and 649 (GSK-1000).

**For research use only. Not intended for therapeutic or diagnostic use in animals or humans.**



## SPECIFICATIONS

<b>Unit Size</b>	1 Kit
<b>Storage Instructions</b>	Store reagents in original bottles at 2–8 °C. Do not freeze the kit.
<b>Sugar Specificity</b>	Mannose, Galactose, Fucose, Sialic Acid
<b>Applications</b>	Immunofluorescence, Glycobiology
<b>Conjugate</b>	DyLight 488

## KIT COMPONENTS

This glycan screening kit is designed to provide the investigator with a panel of eight biotinylated lectin conjugates. The lectins have been selected to offer a variety of sugar specificities and are of the same high quality as the reagents offered individually.

Glysite Scout Glycan Screening Kit, Immunofluorescence 488 contains the following biotinylated lectins:

- AAL (*Aleuria Aurantia*)
- ECL, ECA (*Erythrina Cristagalli*)
- GNL (*Galanthus Nivalis*)
- Jacalin
- MAL II (*Maackia Amurensis II*)
- PHA-L (*Phaseolus Vulgaris Leucoagglutinin*)
- WFA, WFL (*Wisteria Fluoribunda*)
- WGA (Wheat Germ Agglutinin)

In addition to the glycan binders, the kit includes optimized immunofluorescence reagents for glycan detection, including blocking solutions, DyLight™ streptavidin, and VECTASHIELD Vibrance® Antifade Mounting Medium with DAPI.

## TECHNICAL INFORMATION

The lectins selected for the Glysite Scout Glycan Screening Kit, Immunofluorescence 488 were specifically chosen to provide detection of all of the major glycan motifs for the evaluation of glycan distribution in a target specimen. Follow our optimized protocol or view our how-to video

**For research use only. Not intended for therapeutic or diagnostic use in animals or humans.**



to learn how you can rapidly explore glycan expression in your tissue section.

In addition to the glycan binders, the kit includes optimized immunofluorescence reagents for glycan detection, including blocking solutions, DyLight™ streptavidin, and VECTASHIELD Vibrance® Antifade Mounting Medium with DAPI.

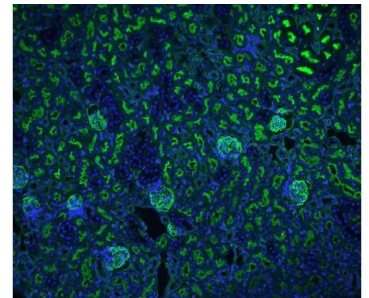
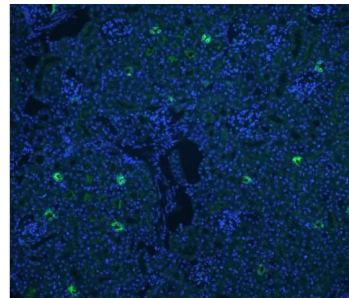
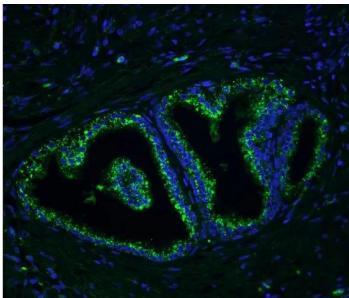
## LEGAL NOTICE

DyLight is a trademark of Pierce Biotechnology, Inc.

## DOCUMENTS

- [User Guide](#)
- [Safety Data Sheet](#)
- [Download CoA](#)
- [Datasheet](#)

## GALLERY IMAGES



**For research use only. Not intended for therapeutic or diagnostic use in animals or humans.**