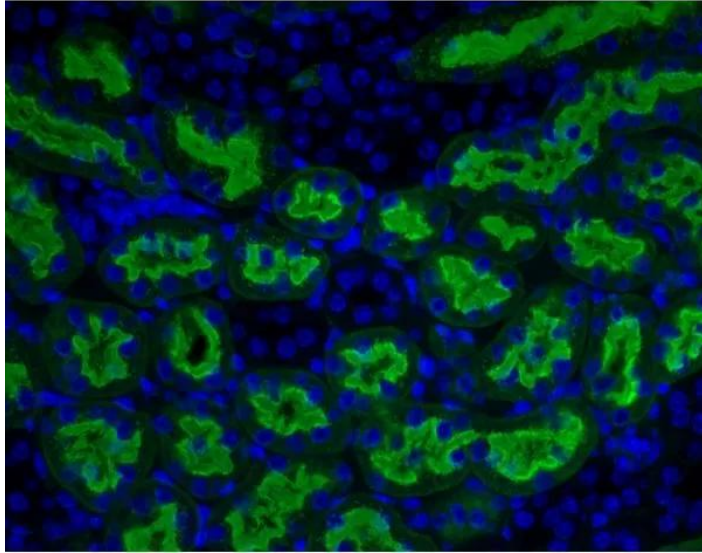




ALEURIA AURANTIA LECTIN (AAL), FLUORESCIN

SKU: FL-1391-1



DESCRIPTION

Unlike *Ulex europaeus* and *Lotus tetragonolobus* lectins which prefer (α -1,2) linked fucose residues, *Aleuria aurantia* lectin binds preferentially to fucose linked (α -1,6) to *N*-acetylglucosamine or to fucose linked (α -1,3) to *N*-acetyllactosamine related structures. AAL also reversibly binds fucose attached to nucleic acids.

Fluorescein labeled *Aleuria aurantia* lectin has an appropriate number of fluorochromes bound to provide the optimum staining characteristics for this lectin. This conjugate is supplied essentially free of unconjugated fluorochromes. The excitation maximum is at 495 nm and the emission maximum is at 515 nm.

SPECIFICATIONS

Molecular Weight	72
Color of Fluorescence	Green

For research use only. Not intended for therapeutic or diagnostic use in animals or humans.



Extinction Coefficient	2.97
Formulation	10 mM HEPES, pH 7.5, 0.15 M NaCl, 0.08% sodium azide.
Inhibiting or Eluting Sugar	L-Fucose
Maximum Emission	514-521 nm
Maximum Excitation	495-500 nm
Unit Size	1 mg
Storage Instructions	2-8°C
Sugar Specificity	α -linked fucose
Usage Summary	The recommended concentration range for use is 5-20 μ g/ml.
Applications	Immunofluorescence, Glycobiology
Concentration	1 mg active conjugate/ml
Conjugate	Fluorescein

TECHNICAL INFORMATION

This lectin is a dimer of two identical subunits of about 36 kDa each.

Accompanying each fluorescent lectin is an analysis data sheet summarizing the results of our quality control tests and providing pertinent information on the product. All of these reagents are supplied as solutions preserved with sodium azide.

Inhibiting/Eluting Sugar: 100 mM L-fucose

CITATIONS



Powered by Bioz © 2023 See more details on Bioz

DOCUMENTS

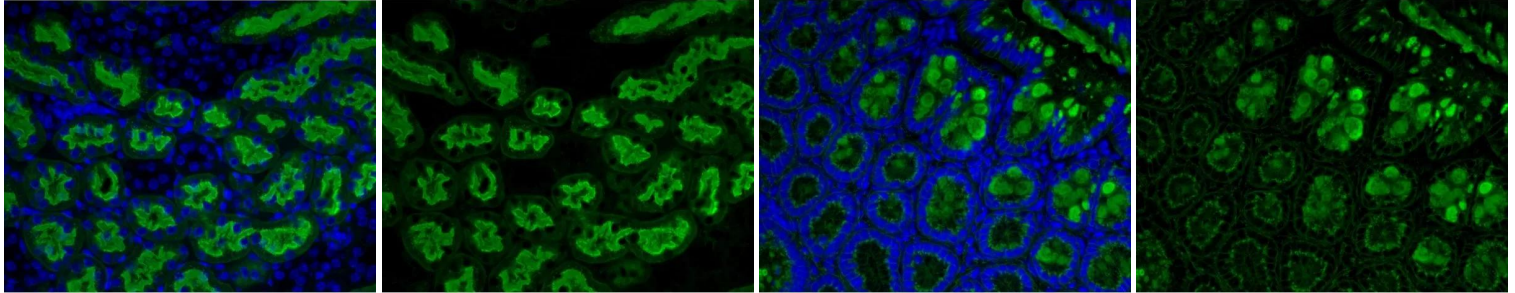
- [Lectins in Histochemistry, ELISA, and Western Blot Applications](#)
- [Safety Data Sheet](#)
- [Download CoA](#)

For research use only. Not intended for therapeutic or diagnostic use in animals or humans.



- [Datasheet](#)

GALLERY IMAGES



For research use only. Not intended for therapeutic or diagnostic use in animals or humans.