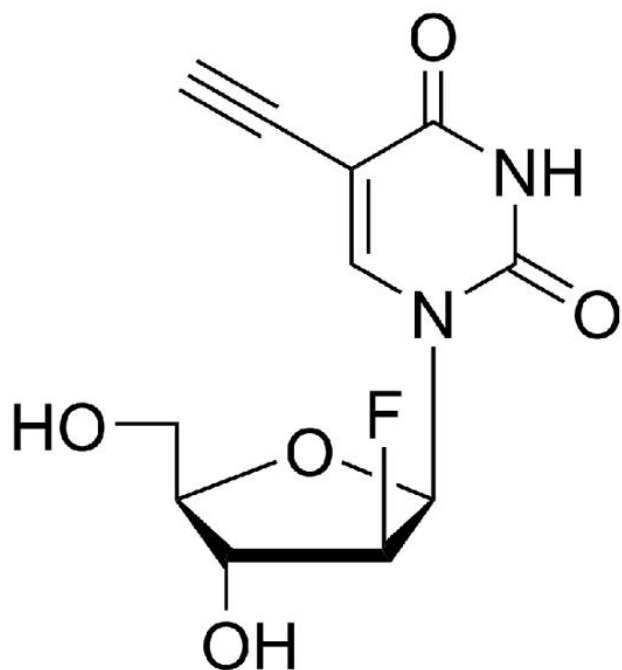




## **F-ARA-EDU**

**SKU:** CCT-1403



## **DESCRIPTION**

F-ara-EdU is a probe for DNA synthesis that is less toxic compared to 5-ethynyl-2'-deoxyuridine (EdU) and BrdU. Ideally suited for metabolic DNA labeling experiments where long-term cell survival and/or deep-tissue imaging are desired. The alkyne handler can be used for subsequent ligation to azide-containing molecules through a highly efficient click chemistry reaction.

## **SPECIFICATIONS**

<b>CAS Number</b>	N/A
<b>Molecular Weight</b>	270.22

**For research use only. Not intended for therapeutic or diagnostic use in animals or humans.**



<b>Appearance</b>	Off white to grey crystalline
<b>Chemical Formula</b>	C <sub>11</sub> H <sub>11</sub> NF <sub>2</sub> O <sub>5</sub>
<b>Purity</b>	>95% (HPLC)
<b>Unit Size</b>	5 mg, 25 mg, 100 mg, 500 mg
<b>Solubility</b>	Water, DMSO, DMF
<b>Storage Instructions</b>	-20°C.
<b>Shipping Conditions</b>	Ambient temperature
<b>Shipping Instructions</b>	Ambient temperature

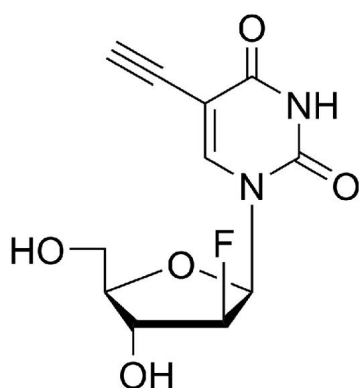
## SELECTED REFERENCES

1. Raz, A. A., *et al.* (2021). Planarian stem cells specify fate yet retain potency during the cell cycle. *Cell Stem Cell.*, **28 (7)**, 1307-1322.e5. [[PubMed](#)]
2. Neef, A.B., *et al.* (2011). Dynamic metabolic labeling of DNA in vivo with arabinosyl nucleosides. *PNAS.*, **108**, 20404-9. [[PubMed](#)]

## DOCUMENTS

- [Safety Data Sheet](#)
- [Download CoA](#)
- [Datasheet](#)

## GALLERY IMAGES



For research use only. Not intended for therapeutic or diagnostic use in animals or humans.



[www.vectorlabs.com](http://www.vectorlabs.com)

Email: [customerservice@vectorlabs.com](mailto:customerservice@vectorlabs.com)

Telephone: [\(650\) 697-3600](tel:(650)697-3600)

**For research use only. Not intended for therapeutic or diagnostic use in animals or humans.**

[F-ara-Edu](#)

<https://vectorlabs.com/products/f-ara-edu/>