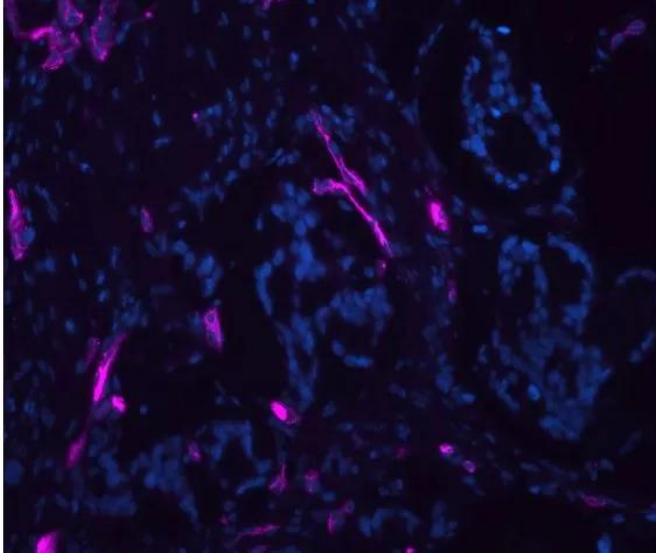




ULEX EUROPAEUS AGGLUTININ I (UEA I), DYLIGHT 649

SKU: DL-1068-1



DESCRIPTION

Ulex europaeus agglutinin I binds to many glycoproteins and glycolipids containing α -linked fucose residues, such as ABO blood group glycoconjugates. This lectin preferentially binds blood group O cells and has been used to determine secretor status. It has been established as an excellent marker for human endothelial cells.

DyLight 594 labeled *Ulex europaeus* agglutinin I has an appropriate number of fluorochromes bound to provide the optimum staining characteristics for this lectin. This conjugate is supplied essentially free of unconjugated fluorochromes.

- Excitation at 655 nm
- Emission at 670 nm
- Color: Far Red

For research use only. Not intended for therapeutic or diagnostic use in animals or humans.



SPECIFICATIONS

| | |
|------------------------------------|--|
| Molecular Weight | 63 |
| Color of Fluorescence | Far Red |
| Extinction Coefficient | 1.3 |
| Formulation | 10 mM HEPES, 0.15 M NaCl, pH 7.5, 0.08% sodium azide, 0.1 mM CaCl ₂ . |
| Inhibiting or Eluting Sugar | L-Fucose |
| Maximum Emission | 670 nm |
| Maximum Excitation | 655 nm |
| Unit Size | 1 mg |
| Storage Instructions | 2-8 °C |
| Sugar Specificity | α1,2-linked fucose |
| Usage Summary | The recommended concentration range for use is 5-20 µg/ml. If a precipitate forms upon long-term storage, warm to 37 °C. |
| Applications | Immunofluorescence, Glycobiology |
| Concentration | 1 mg active conjugate/ml |
| Conjugate | DyLight 649 |

TECHNICAL INFORMATION

Accompanying each fluorescent lectin is an analysis data sheet summarizing the results of our quality control tests and providing pertinent information on the product. All of these reagents are supplied as solutions preserved with sodium azide.

Inhibiting/Eluting Sugar: 50 mM - 100 mM L-fucose

CITATIONS



Powered by Bioz © 2023 See more details on Bioz

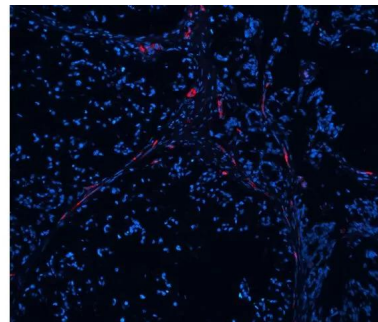
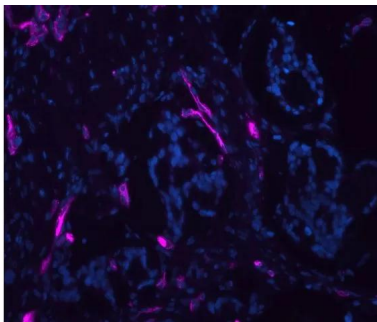
For research use only. Not intended for therapeutic or diagnostic use in animals or humans.



DOCUMENTS

- [Safety Data Sheet](#)
- [Lectins in Histochemistry, ELISA, and Western Blot Applications](#)
- [Download CoA](#)
- [Datasheet](#)

GALLERY IMAGES



For research use only. Not intended for therapeutic or diagnostic use in animals or humans.