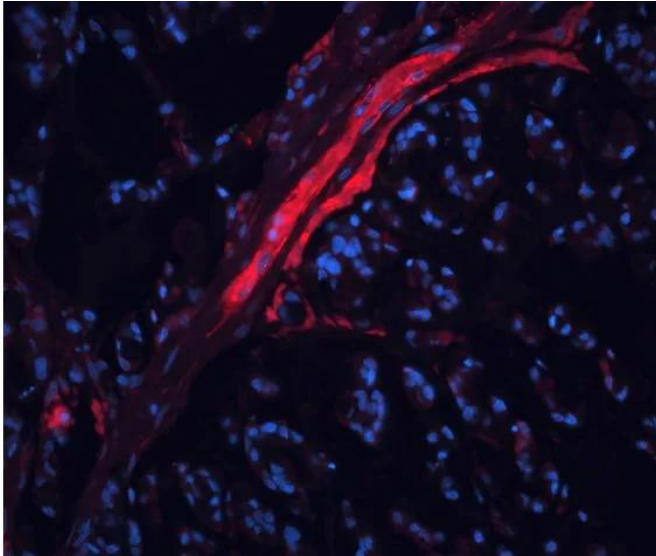




ULEX EUROPAEUS AGGLUTININ I (UEA I), DYLIGHT 594

SKU: DL-1067-1



DESCRIPTION

Ulex europaeus agglutinin I binds to many glycoproteins and glycolipids containing α -linked fucose residues, such as ABO blood group glycoconjugates. This lectin preferentially binds blood group O cells and has been used to determine secretor status. It has been established as an excellent marker for human endothelial cells.

DyLight 594 labeled *Ulex europaeus* agglutinin I has an appropriate number of fluorochromes bound to provide the optimum staining characteristics for this lectin. This conjugate is supplied essentially free of unconjugated fluorochromes.

- Excitation at 592 nm
- Emission at 617 nm
- Color: Red

For research use only. Not intended for therapeutic or diagnostic use in animals or humans.



SPECIFICATIONS

Molecular Weight	63
Color of Fluorescence	Red
Extinction Coefficient	1.3
Formulation	10 mM HEPES, 0.15 M NaCl, pH 7.5, 0.08% sodium azide, 0.1 mM CaCl ₂ .
Inhibiting or Eluting Sugar	L-Fucose
Maximum Emission	617 nm
Maximum Excitation	592 nm
Unit Size	1 mg
Storage Instructions	2-8 °C
Sugar Specificity	α 1,2-linked fucose
Usage Summary	The recommended concentration range for use is 5-20 μ g/ml. If a precipitate forms upon long-term storage, warm to 37 °C.
Applications	Immunofluorescence, Glycobiology
Concentration	1 mg active conjugate/ml
Conjugate	DyLight 594

TECHNICAL INFORMATION

Accompanying each fluorescent lectin is an analysis data sheet summarizing the results of our quality control tests and providing pertinent information on the product. All of these reagents are supplied as solutions preserved with sodium azide.

Inhibiting/Eluting Sugar: 50 mM - 100 mM L-fucose

CITATIONS



Powered by Bioz © 2023 See more details on Bioz

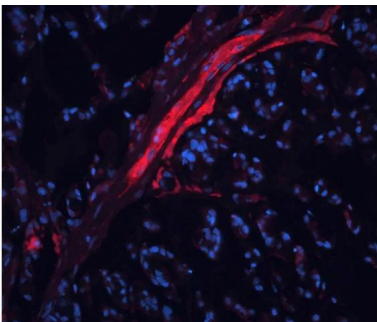
For research use only. Not intended for therapeutic or diagnostic use in animals or humans.



DOCUMENTS

- [Safety Data Sheet](#)
- [Lectins in Histochemistry, ELISA, and Western Blot Applications](#)
- [Download CoA](#)
- [Datasheet](#)

GALLERY IMAGES



For research use only. Not intended for therapeutic or diagnostic use in animals or humans.