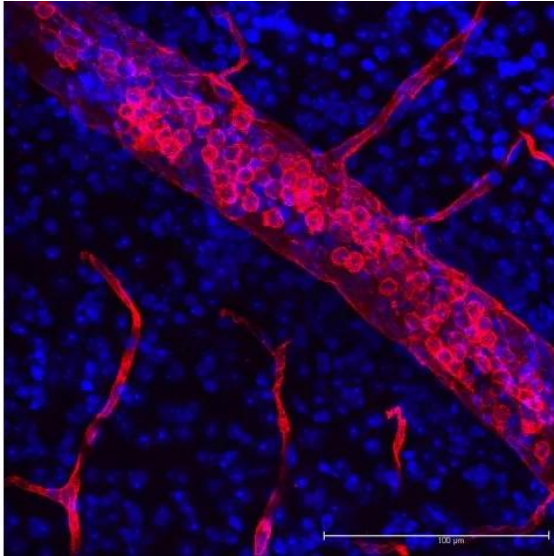




LYCOPERSICON ESCULENTUM (TOMATO) LECTIN (LEL, TL), DYLIGHT 594

SKU: DL-1177-1



DESCRIPTION

Tomato lectin (from *Lycopersicon esculentum*) is an effective marker of blood vessels and microglial cells in rodents. Conjugation of the lectin with a fluorophore facilitates fast, one-step detection and visualization using intravascular perfusion methods or direct application to tissue sections.

DyLight™ 594 labeled tomato lectin has an appropriate number of fluorochromes bound to provide the optimum staining characteristics for this lectin. This conjugate is supplied essentially free of unconjugated fluorochromes.

- Excitation maximum: 592 nm
- Emission maximum: 617 nm
- Color: Red

For research use only. Not intended for therapeutic or diagnostic use in animals or humans.



SPECIFICATIONS

Molecular Weight	71
Color of Fluorescence	Red
Extinction Coefficient	0.76
Formulation	10 mM HEPES, 0.15 M NaCl, pH 7.5, 0.08% sodium azide, 0.1 mM CaCl ₂ .
Inhibiting or Eluting Sugar	Chitin Hydrolysate
Maximum Emission	617 nm
Maximum Excitation	592 nm
Unit Size	1 mg
Storage Instructions	2-8 °C
Sugar Specificity	Chitin oligomers, type 2 polyLacNAc, and Type 2 LacdiNAc The recommended concentration range for use is 5-20 µg/ml. If a precipitate forms upon long-term storage, warm to 37 °C.
Usage Summary	
Applications	Immunofluorescence, Glycobiology
Concentration	1 mg active conjugate/ml
Conjugate	DyLight 594

TECHNICAL INFORMATION

Tomato lectin is a very stable single subunit glycoprotein containing about 50 percent arabinose and galactose and may form multimeric aggregates in solution. Tomato lectin, although sharing some specificities with potato lectin, Datura lectin, and wheat germ agglutinin, has been reported to be dissimilar in many respects. LEL binds well to glycophorin and Tamm-Horsfall glycoprotein and has been used effectively to label vascular endothelium in rodents.

Texas Red[®] or DyLight[®] 594 conjugated tomato lectin provides an excellent contrast to green/yellow fluorescence such as GFP expressed in transgenic animals, or with fluorescein conjugates in standard double label studies. The tomato lectin complements our existing range of lectin reagents and should be a valuable tool in examining rodent tumor angiogenesis, tracing neovascular development in xenograft models and brain research.

Accompanying each fluorescent lectin is an analysis data sheet summarizing the results of our

For research use only. Not intended for therapeutic or diagnostic use in animals or humans.



quality control tests and providing pertinent information on the product. All of these reagents are supplied as solutions preserved with sodium azide.

Inhibiting/Eluting Sugar: Chitin Hydrolysate

CITATIONS

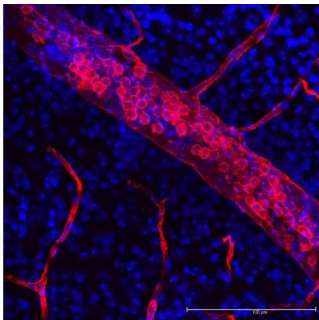


Powered by Bioz © 2023 See more details on Bioz

DOCUMENTS

- [Lectins in Histochemistry, ELISA, and Western Blot Applications](#)
- [Safety Data Sheet](#)
- [Download CoA](#)
- [Datasheet](#)

GALLERY IMAGES



For research use only. Not intended for therapeutic or diagnostic use in animals or humans.