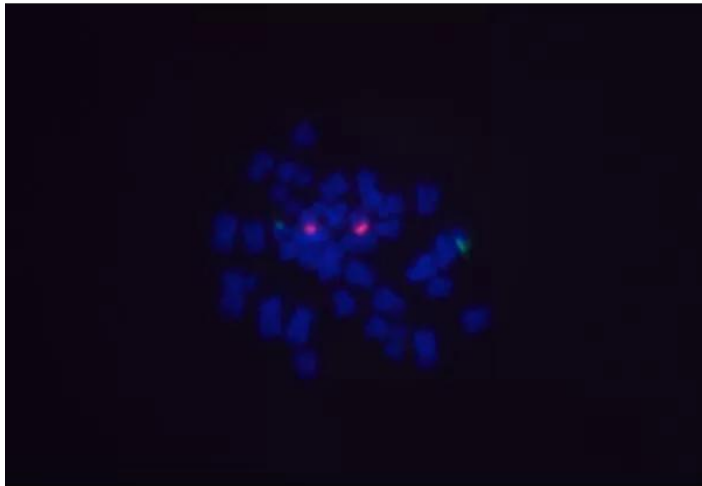




GOAT ANTI-DIGOXIGENIN/DIGOXIN (DIG) ANTIBODY, DYLIGHT 488

SKU: DI-7488-.5



DESCRIPTION

Digoxigenin (DIG) is a small plant-derived molecule not found in animals. DIG is used to label nucleic acid probes for applications such as *in situ* hybridization. DIG-labeled probes are detected with antibodies specifically directed against the DIG label. We have generated high affinity and highly purified antibodies for this purpose. The DyLight™ conjugated antibodies allow a one-step fluorescent visualization of DIG-labeled probes.

Features:

- High affinity and highly purified antibody to detect DIG-labeled probes
- DyLight® 488 conjugated antibodies allow a one-step fluorescent visualization of DIG-labeled probes
- Excitation: 493 nm
- Emission: 518 nm

For research use only. Not intended for therapeutic or diagnostic use in animals or humans.



- Color: Green

SPECIFICATIONS

| | |
|------------------------------|--|
| Color of Fluorescence | Green |
| Format | Concentrate |
| Formulation | 10 mM HEPES, 0.15 M NaCl, pH 7.8, 0.08% sodium azide. |
| Maximum Emission | 518 nm |
| Maximum Excitation | 493 nm |
| Unit Size | 0.5 mg |
| Storage Instructions | 2-8 °C |
| Usage Summary | The recommended concentration range for use is 5-20 µg/ml. |
| Applications | In situ hybridization |
| Concentration | 1.0 mg active conjugate/ml |
| Conjugate | DyLight 488 |
| Host Species | Goat |

TECHNICAL INFORMATION

DyLight™ dyes offer several advantages including greater photostability, pH independence and brighter fluorescence. DyLight™ conjugates are completely stable from pH 4 to pH 9, making them compatible with many buffers and diluents.

CITATIONS



Powered by Bioz © 2023 See more details on Bioz

DOCUMENTS

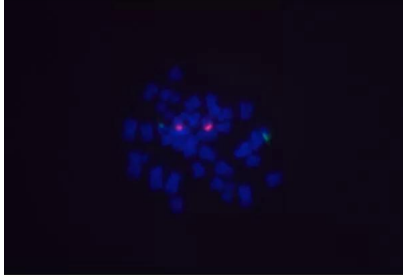
- [Safety Data Sheet](#)
- [Download CoA](#)

For research use only. Not intended for therapeutic or diagnostic use in animals or humans.



- [Datasheet](#)

GALLERY IMAGES



For research use only. Not intended for therapeutic or diagnostic use in animals or humans.