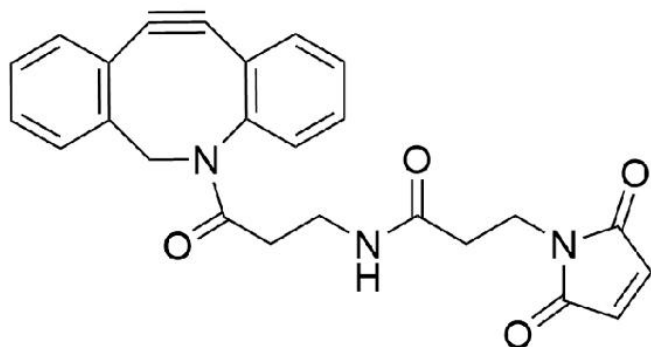




DBC MALEIMIDE

SKU: CCT-A108



DESCRIPTION

DBC Maleimide enables simple and efficient incorporation of DBCO moiety onto cysteine-containing peptides or other thiol-containing molecules. The maleimide group specifically and efficiently reacts with reduced thiols (sulfhydryl groups, -SH) at pH 6.5 to 7.5 to form stable thioether bonds.

This product is not recommended for labeling of proteins or any other biopolymers in aqueous buffers due to poor aqueous solubility.

SPECIFICATIONS

CAS Number	1395786-30-7
Molecular Weight	427.75
Appearance	Slightly grey to slightly orange solid
Chemical Formula	C ₂₅ H ₂₁ N ₃ O ₄
Purity	>95% (HPLC)
Unit Size	25mg, 100 mg, 1000 mg
Solubility	DMSO, DMF, DCM, THF, Chloroform

For research use only. Not intended for therapeutic or diagnostic use in animals or humans.



Storage Instructions	-20°C. Desiccate
Shipping Conditions	Ambient temperature
Shipping Instructions	Ambient temperature

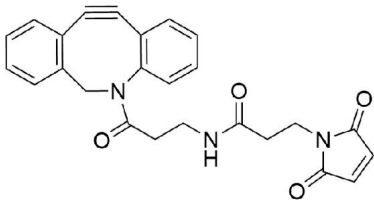
SELECTED REFERENCES

1. Kiseleva, R., *et al.* (2020). MBivalent engagement of endothelial surface antigens is critical to prolonged surface targeting and protein delivery in vivo. *FASEB Journal*, **34**, **9**, 11577-93. [[FASEB](#)]

DOCUMENTS

- [Safety Data Sheet](#)
- [Download CoA](#)
- [User Guide](#)
- [Datasheet](#)

GALLERY IMAGES



For research use only. Not intended for therapeutic or diagnostic use in animals or humans.