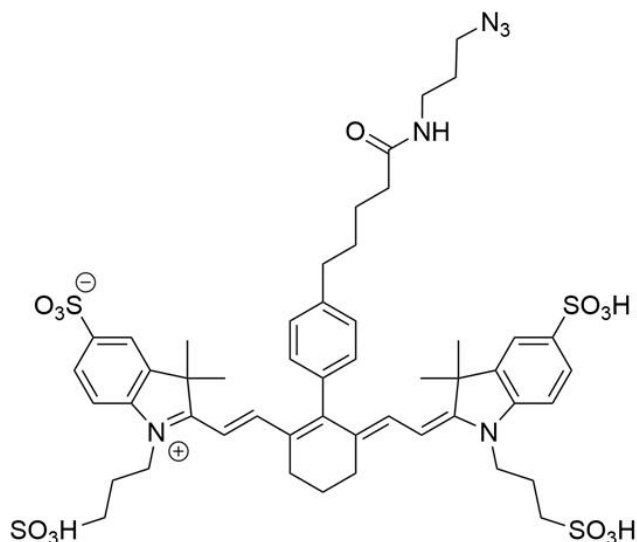




## **CY7 AZIDE**

**SKU:** CCT-1052



---

## **DESCRIPTION**

The Cy7 azide can be reacted with terminal alkynes via a copper-catalyzed click reaction (CuAAC). It also reacts with strained cyclooctyne via a copper-free “click chemistry” reaction to form a stable triazole and does not require Cu-catalyst or elevated temperatures.

Cy7 Azide is a bright and photostable near-IR probe that is spectrally similar to Alexa Fluor® 750, DyLight® 750, and IRDye® 750 dye. The fluorescence of Cy7 Azide is pH insensitive from pH 4 to pH 10 and produces minimal autofluorescence of biological specimens in this region of the spectrum. Fluorescence of this long-wavelength Cyanine dye is not visible to the human eye but is readily detected by most imaging systems.

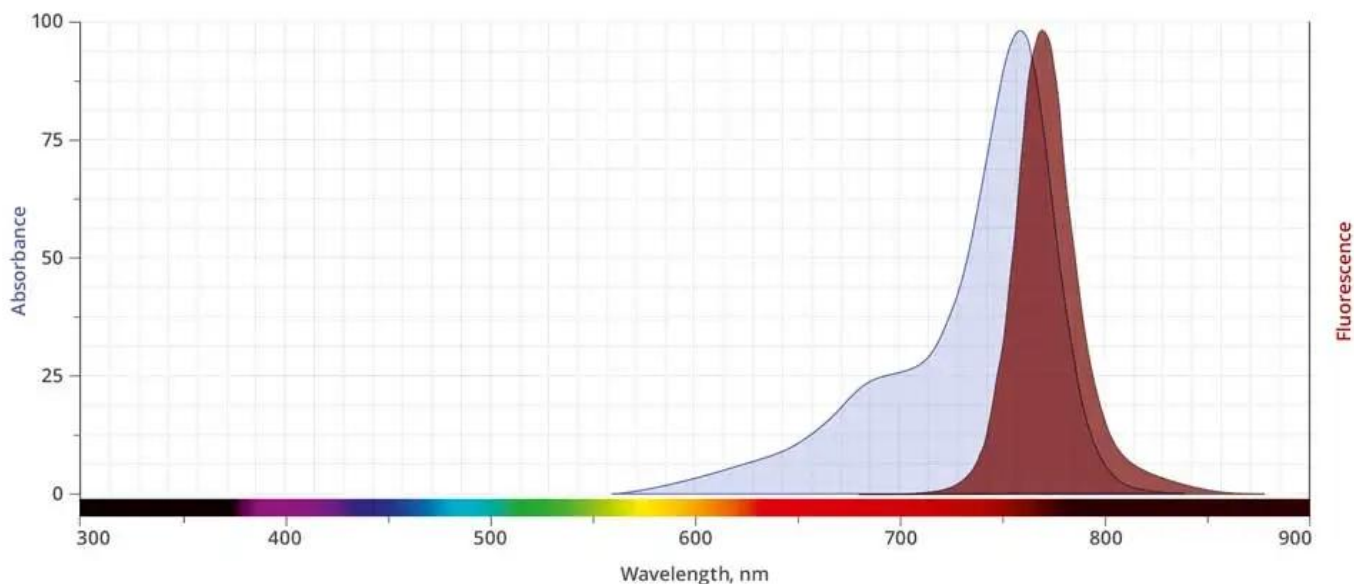
**For research use only. Not intended for therapeutic or diagnostic use in animals or humans.**



## SPECIFICATIONS

<b>CAS Number</b>	N/A
<b>Molecular Weight</b>	1083.32
<b>Appearance</b>	Dark green solid
<b>Extinction Coefficient</b>	255,000
<b>Purity</b>	>95% (HPLC)
<b>Unit Size</b>	1 mg, 5 mg, 25 mg, 100 mg
<b>Solubility</b>	Water, DMSO, DMF
<b>Storage Instructions</b>	-20°C. Desiccate
<b>Spectrally Similar Dyes</b>	Alexa Fluor® 750, RDye® 750, CF® 750 Dye, DyLight® 750
<b>Excitation/Emission Maximum</b>	753/775 nm
<b>Shipping Conditions</b>	Ambient temperature
<b>Shipping Instructions</b>	Ambient temperature

## ABS/EM SPECTRA



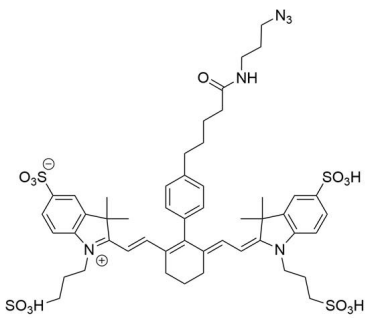
For research use only. Not intended for therapeutic or diagnostic use in animals or humans.



## DOCUMENTS

- [Safety Data Sheet](#)
- [Download CoA](#)
- [Datasheet](#)

## GALLERY IMAGES



**For research use only. Not intended for therapeutic or diagnostic use in animals or humans.**