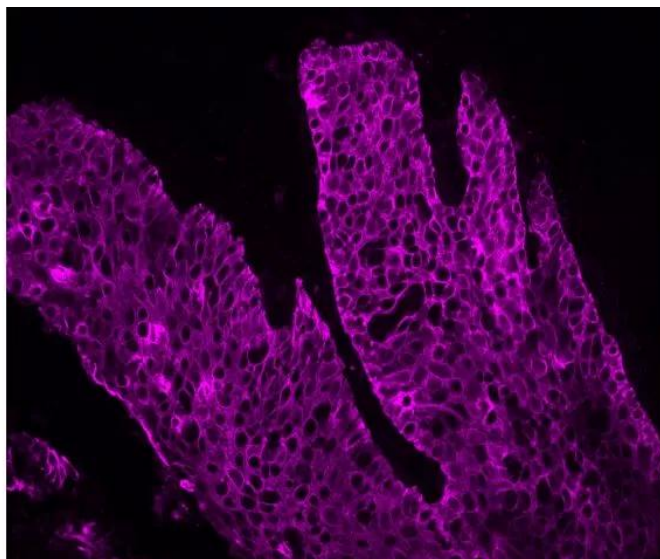


# STREPTAVIDIN, CY5

SKU: SA-1500-1



## Description

Vector Laboratories fluorochrome-conjugated streptavidin and avidin reagents are highly purified and possess very low non-specific binding properties. They have extremely high affinity for biotin. These fluorescent conjugates can be used to detect biotinylated secondary antibodies and other macromolecules in applications such as immunofluorescence, in situ hybridization, or flow cytometry.

Amplification of fluorescent signals can be easily achieved with our biotinylated secondary antibodies followed by our highly purified fluorochrome-labeled streptavidin or avidin. Using a biotin/avidin or biotin/streptavidin detection system results in an additional layer of amplification over a directly conjugated secondary antibody.

- Excitation: 650 nm
- Emission: 670 nm
- Color: Far Red

## Specifications

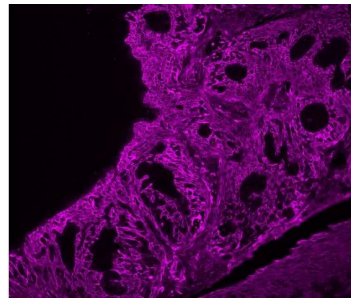
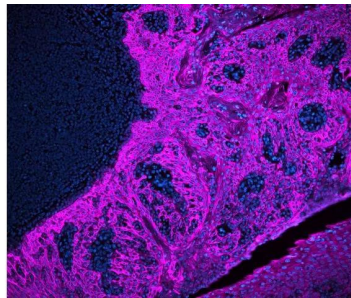
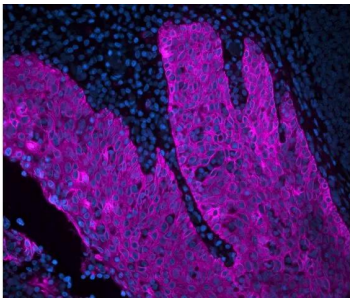
<b>Unit Size</b>	1 mg
------------------	------

**For research use only. Not intended for animal or human therapeutic or diagnostic use.**

<b>Applications</b>	Immunofluorescence, In situ hybridization, Flow Cytometry/Cell Separation
<b>Recommended Usage</b>	Recommended concentration range for use 5-30 µg/ml Avoid using RPMI 1640 or other biotin-containing solutions as diluents. Serum also can contain biotin and should not be added to diluents.
<b>Solution</b>	10 mM HEPES, 0.15 M NaCl, pH 7.5, 0.08% sodium azide.
<b>Maximum Excitation</b>	647 nm
<b>Maximum Emission</b>	663 nm
<b>Recommended Storage</b>	2-8 °C
<b>Concentration</b>	1.0 mg/ml active conjugate
<b>Conjugate</b>	Cy5
<b>Color of Fluorescence</b>	Far Red
<b>Format</b>	Concentrate

---

## GALLERY IMAGES



**For research use only. Not intended for animal or human therapeutic or diagnostic use.**