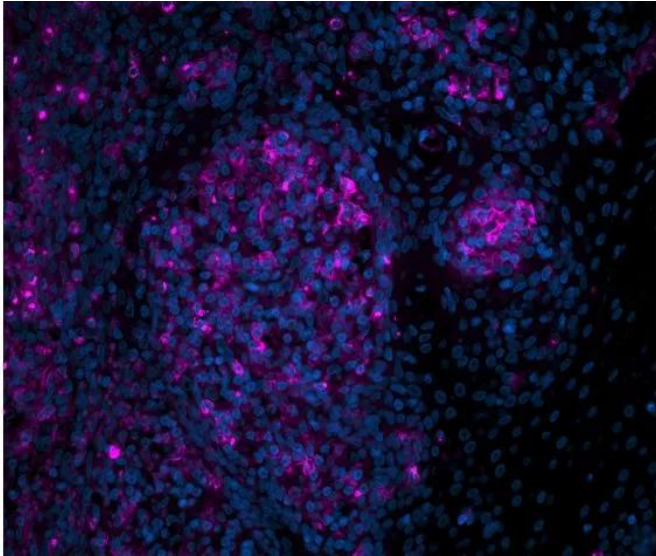




## **PEANUT AGGLUTININ (PNA), CY5**

**SKU:** CL-1075-1



---

### **DESCRIPTION**

Peanut agglutinin binds preferentially to the T-antigen, a galactosyl ( $\beta$ -1,3) *N*-acetylgalactosamine structure present in many glycoconjugates such as M and N blood groups, gangliosides, and many other soluble and membrane-associated glycoproteins and glycolipids. With certain exceptions, the receptor sequence for PNA is normally sialylated which prevents the lectin from binding to its receptor oligosaccharide (see Jacalin). Even sialic acid which is not bound directly to the receptor sugars may inhibit binding. The presence of calcium ions in diluents can enhance the binding of PNA to receptors, possibly by neutralizing the negative charges on sialic acid residues adjacent to the receptor sequence.

Cy5 labeled Peanut agglutinin has an appropriate number of fluorochromes bound to provide the optimum staining characteristics for this lectin. This conjugate is supplied essentially free of unconjugated fluorochromes.

- Excitation: 650 nm
- Emission: 670 nm

**For research use only. Not intended for therapeutic or diagnostic use in animals or humans.**



- Color: Far Red

## SPECIFICATIONS

<b>Molecular Weight</b>	110
<b>Color of Fluorescence</b>	Far Red
<b>Extinction Coefficient</b>	0.89
<b>Formulation</b>	10 mM HEPES, 0.15 M NaCl, pH 7.5, 0.08% sodium azide, 0.1 mM CaCl <sub>2</sub> , and a proprietary stabilizer.
<b>Inhibiting or Eluting Sugar</b>	Galactose
<b>Maximum Emission</b>	670 nm
<b>Maximum Excitation</b>	650 nm
<b>Unit Size</b>	1 mg
<b>Storage Instructions</b>	2-8 °C
<b>Sugar Specificity</b>	Core 1 and core 2 O-glycans
<b>Usage Summary</b>	The recommended concentration range for use is 5-20 µg/ml.
<b>Applications</b>	Immunofluorescence, Glycobiology
<b>Concentration</b>	1 mg active conjugate/ml
<b>Conjugate</b>	Cy5

## TECHNICAL INFORMATION

PNA is useful in distinguishing between normal and tumor tissues and in assessing malignancy in transitional mucosa. In addition, PNA binding can be used to measure cellular maturity in lymphoid tissues, to distinguish a variety of lymphocyte subpopulations in man and experimental animals, and to measure the levels of lymphoid cell populations in many diseases. PNA can be employed in the fractionation of stem cells in mice for use in bone marrow transplantation across histocompatibility barriers.

A major cell surface receptor for PNA may be asialo GM<sub>1</sub> ganglioside. Since PNA shares specificity with the antibody to this glycolipid, PNA and the antibody can be used interchangeably in some applications.

Accompanying each fluorescent lectin is an analysis data sheet summarizing the results of our

**For research use only. Not intended for therapeutic or diagnostic use in animals or humans.**



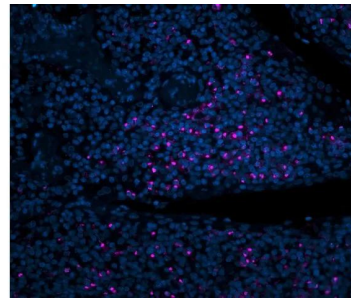
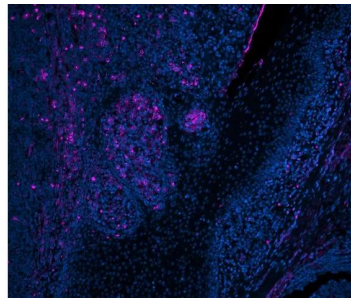
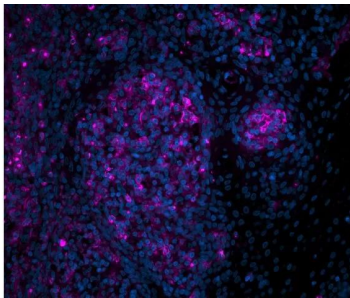
quality control tests and providing pertinent information on the product. All of these reagents are supplied as solutions preserved with sodium azide.

Inhibiting/Eluting Sugar: 200 mM galactose

## DOCUMENTS

- [Safety Data Sheet](#)
- [Lectins in Histochemistry, ELISA, and Western Blot Applications](#)
- [Download CoA](#)
- [Datasheet](#)

## GALLERY IMAGES



**For research use only. Not intended for therapeutic or diagnostic use in animals or humans.**