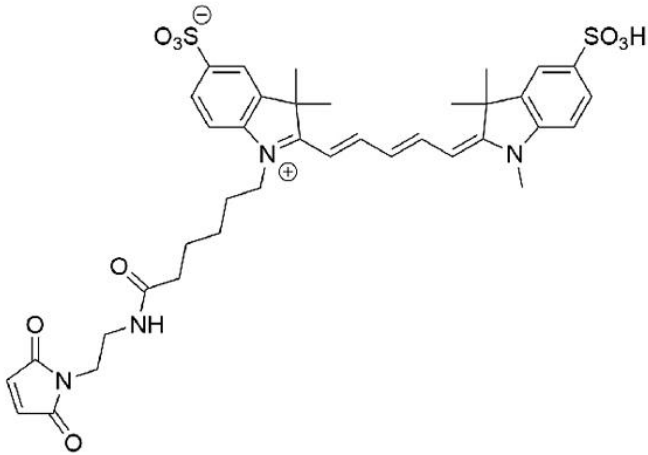




CY5 MALEIMIDE

SKU: FP-1322



DESCRIPTION

633/647



Laser
line

Cy5



Common
filter set

650



Excitation
max

665



Emission
max

Cy5 Maleimide (also sold under Sulfo-Cyanine5 Maleimide) is a water-soluble, bright, far-red-fluorescent dye with excitation ideally suited for the 633 nm or 647 nm laser lines. A significant advantage to using long wavelength dyes such as Cy5 or AF 647 dye over other fluorophores is the low autofluorescence of biological specimens in this region of the spectrum.

Maleimide is the most popular sulfhydryl-reactive reactive group for conjugating the dye to a

For research use only. Not intended for therapeutic or diagnostic use in animals or humans.



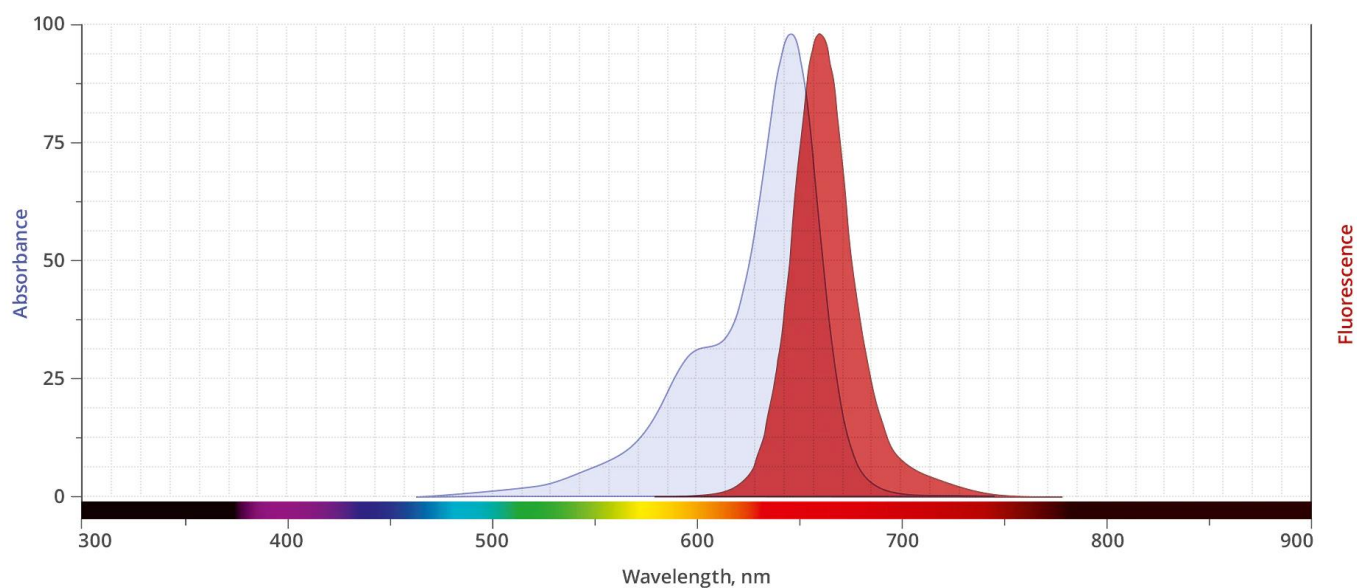
thiol group on a protein, oligonucleotide thiophosphate, or low molecular weight ligand. We do not recommend using Cy5 Maleimide for labeling proteins at high molar ratios due to significant self-quenching. Cy5 conjugates are only recommended for detection of moderate-to-high abundance targets. For detection of low-abundance biological targets we recommend using AF 647 Maleimide (Alexa Fluor® 647 analog) or IR 647 (IRDye® 647 analog), which can be attached to proteins at high molar ratios without significant self-quenching, enabling brighter conjugates and more sensitive detection.

SPECIFICATIONS

Molecular Weight	764.91
Extinction Coefficient	250,000 cm ⁻¹ M ⁻¹
Reactivity	Thiol (Cys)
Unit Size	1 mg, 5 mg, 25 mg, 100 mg
Solubility	Water, DMSO, DMF
Storage Instructions	-20°C.
Spectrally Similar Dyes	Alexa Fluor® 647, DyLight® 649
Excitation/Emission Maximum	648/671 nm
Shipping Conditions	Ambient temperature
Shipping Instructions	Ambient temperature

ABS/EM SPECTRA

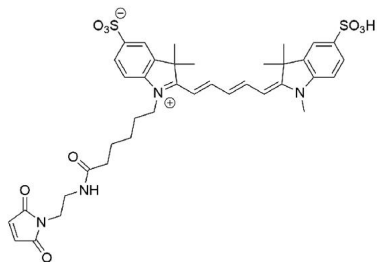
For research use only. Not intended for therapeutic or diagnostic use in animals or humans.



DOCUMENTS

- [Safety Data Sheet](#)
- [Datasheet](#)

GALLERY IMAGES



For research use only. Not intended for therapeutic or diagnostic use in animals or humans.