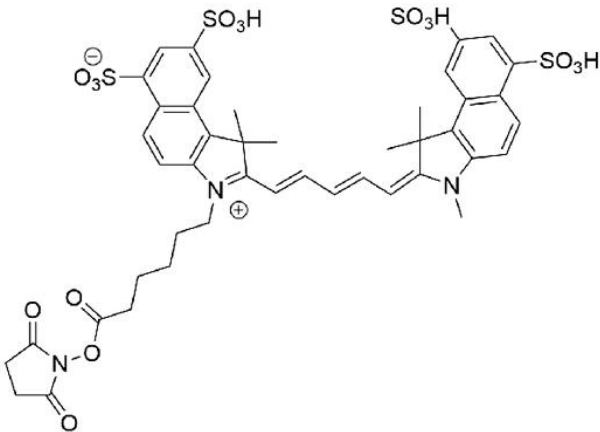




CY5.5 NHS ESTER

SKU: FP-1341



DESCRIPTION

633/647



Laser
line

Cy5.5



Common
filter set

673



Excitation
max

694



Emission
max

Cy5.5 NHS Ester (also sold under sulfo-Cyanine5.5 NHS Ester name) is a bright and photostable near-IR dye that is spectrally similar to Alexa Fluor® 680, DyLight® 680, and IRDye® 680 dye. Cy5.5 NHS Ester is completely water-soluble and often a reagent of choice for labeling antibodies, peptides, and proteins that are sensitive toward organic co-solvents. Cy5.5 conjugates are pH insensitive from pH 4 to pH 10 and produce minimal autofluorescence of

For research use only. Not intended for therapeutic or diagnostic use in animals or humans.



biological specimens in this region of the spectrum. Fluorescence of this long-wavelength Cyanine dye is not visible to the human eye but is readily detected by most imaging systems.

The NHS ester (succinimidyl ester) of Cy5.5 is the most popular tool for conjugating this dye to a protein or antibody. NHS esters can be used to label to the primary amines (R-NH₂) of proteins, amine-modified oligonucleotides, and other amine-containing molecules.

SPECIFICATIONS

Molecular Weight	1303.67
Molecular Formula	C ₆₂ H ₉₀ N ₆ O ₁₆ S ₄
Chemical Formula	C ₆₂ H ₉₀ N ₆ O ₁₆ S ₄
Extinction Coefficient	190,000 cm ⁻¹ M ⁻¹
Reactivity	Primary amine
Unit Size	1 mg, 5 mg, 25 mg, 100 mg
Solubility	Water, DMSO, DMF
Storage Instructions	-20°C.
Spectrally Similar Dyes	Alexa Fluor® 680, DyLight® 680, IRDye® 680
Excitation/Emission Maximum	675 nm / 694 nm
Shipping Conditions	Ambient temperature
Shipping Instructions	Ambient temperature

ABS/EM SPECTRA

For research use only. Not intended for therapeutic or diagnostic use in animals or humans.

