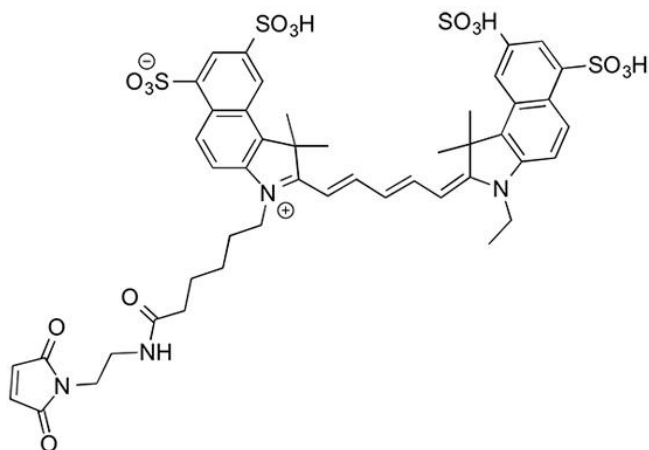


CY5.5 MALEIMIDE

SKU: FP-1342



Description

633/647



Laser
line

Cy5.5



Common
filter set

673



Excitation
max

694



Emission
max

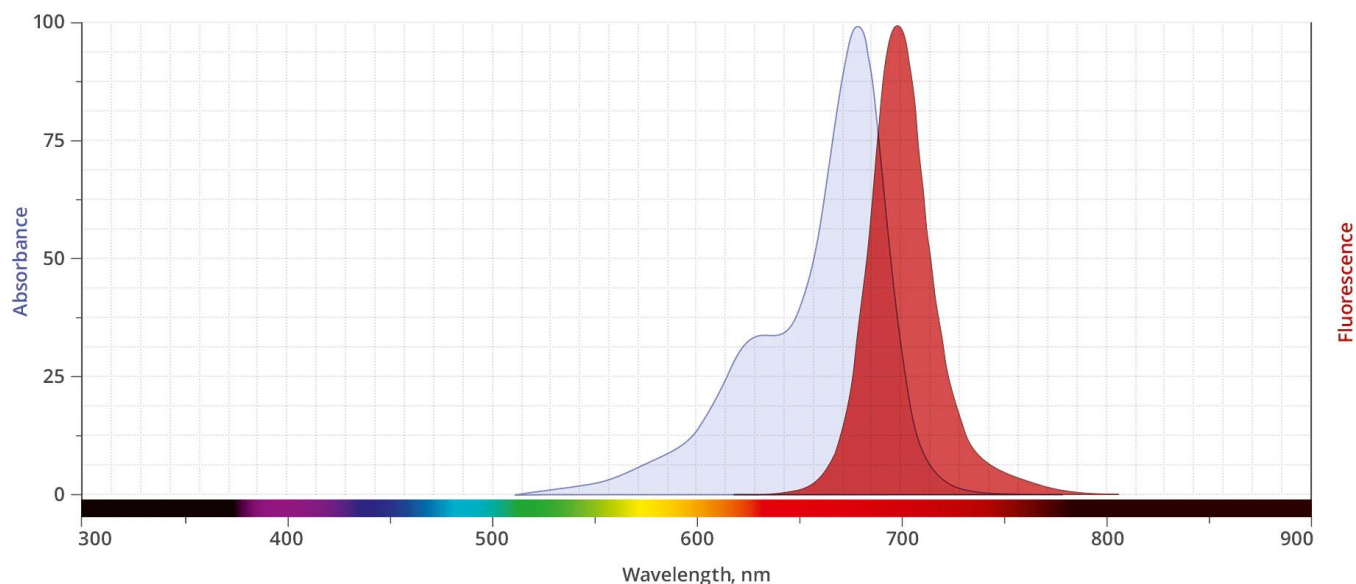
Cy5.5 Maleimide (also sold under as sulfo-Cyanine5.5 Maleimide) is a bright and photostable near-IR dye that is spectrally similar to Alexa Fluor® 680, DyLight 680™, and IRDye® 680 dye. Cy5.5 Maleimide is completely water-soluble and often a reagent of choice for labeling antibodies, peptides, and proteins that are sensitive toward organic co-solvents. Cy5.5 conjugates are pH insensitive from pH 4 to pH 10 and produces minimal autofluorescence of biological specimens in this region of the spectrum. Fluorescence of this long-wavelength Cyanine dye is not visible to the human eye but is readily detected by most imaging systems.

Maleimide is the most popular sulfhydryl-reactive reactive group for conjugating the dye to a

For research use only. Not intended for animal or human therapeutic or diagnostic use.

thiol group on a protein, oligonucleotide thiophosphate, or low molecular weight ligand. The maleimide group specifically and efficiently reacts with reduced thiols (sulfhydryl groups, -SH) at pH 6.5 to 7.5 to form stable thioether bonds.

Abs/Em Spectra



Specifications

Unit Size	1 mg, 5 mg, 25 mg, 100 mg
Reactivity	Thiol (Cys)
Abs/Em Maxima	675/694 nm
Extinction coefficient	190,000 cm ⁻¹ M ⁻¹
Solubility	Water, DMSO, DMF
Spectrally similar dyes	Alexa Fluor® 680, DyLight® 680, IRDye® 680
Molecular weight	1039.17
Storage Conditions	-20°C.
Shipping Conditions	Ambient temperature

For research use only. Not intended for animal or human therapeutic or diagnostic use.