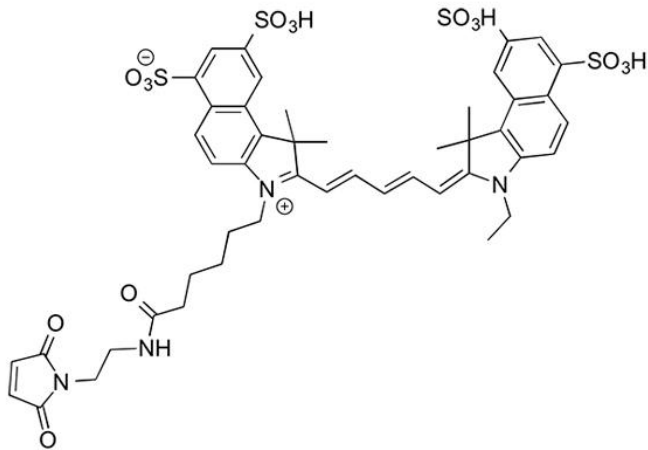




CY5.5 MALEIMIDE

SKU: FP-1342



DESCRIPTION

633/647



Laser
line

Cy5.5



Common
filter set

673



Excitation
max

694



Emission
max

Cy5.5 Maleimide (also sold under as sulfo-Cyanine5.5 Maleimide) is a bright and photostable near-IR dye that is spectrally similar to Alexa Fluor® 680, DyLight 680™, and IRDye® 680 dye. Cy5.5 Maleimide is completely water-soluble and often a reagent of choice for labeling antibodies, peptides, and proteins that are sensitive toward organic co-solvents. Cy5.5 conjugates are pH insensitive from pH 4 to pH 10 and produces minimal autofluorescence of

For research use only. Not intended for therapeutic or diagnostic use in animals or humans.



biological specimens in this region of the spectrum. Fluorescence of this long-wavelength Cyanine dye is not visible to the human eye but is readily detected by most imaging systems.

Maleimide is the most popular sulfhydryl-reactive reactive group for conjugating the dye to a thiol group on a protein, oligonucleotide thiophosphate, or low molecular weight ligand. The maleimide group specifically and efficiently reacts with reduced thiols (sulfhydryl groups, -SH) at pH 6.5 to 7.5 to form stable thioether bonds.

SPECIFICATIONS

Molecular Weight	1039.17
Extinction Coefficient	190,000 cm ⁻¹ M ⁻¹
Reactivity	Thiol (Cys)
Unit Size	1 mg, 5 mg, 25 mg, 100 mg
Solubility	Water, DMSO, DMF
Storage Instructions	-20°C.
Spectrally Similar Dyes	Alexa Fluor® 680, DyLight® 680, IRDye® 680
Excitation/Emission Maximum	675/694 nm
Shipping Conditions	Ambient temperature
Shipping Instructions	Ambient temperature

ABS/EM SPECTRA

For research use only. Not intended for therapeutic or diagnostic use in animals or humans.

